

富东机械制造(香港)有限公司

Fudong Machinery Manufacture (HK) Co, Ltd

**Vacuum parts
products**



CONTENT

1. CF FLANGE & TUBE-----Page1-17

2. KF FLANGE & TUBE-----Page18-38

3. ISO FLANGE & TUBE-----Page39-50

4. ADAPTORS-----Page51-59

5. WELD FITTINGS-----Page60-67

6. BELLOWS, FLEXBLE HOSES &TRAPS-----Page 68-71

CF FLANGES & FITTINGS



CF FLANGE & TUBE

Knife edge flanges (CF flanges) are available in sizes from 1.33" to 16.5" with fixed and rotary options.

CF flanges have the highest level of processing quality and clean packaging that meets ultra-high vacuum. We provide SUS304/L, 316LN and other stainless steel materials.

The CF flange adopts OFHC (Oxygen-Free High Conductivity) copper material, referred to as oxygen-free copper gasket, which is effectively combined with the CF flange for sealing, and the minimum pressure reaches 1×10^{-10} Torr.

Another advantage of oxygen-free copper gaskets is that they can be used in an environment of 450 degrees Celsius. However, oxygen-free copper gaskets are not recommended for reuse.

In the conversion of UHV (Ultra High Vacuum) and HV (High Vacuum) environments, we also provide a complete range of conversion flanges and joints, please also refer to the adapter series.

SPECIFICATION

APPLICATION: VACUUM

MATERIAL: 304/L; 316LN

Flange size range: CF 1.33"-16.5"

Standard pipe diameter size range: 1/2"-6"
(Pipe fittings above 8" are customized)

Pressure range:

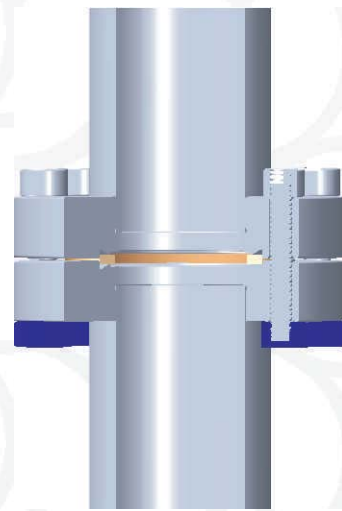
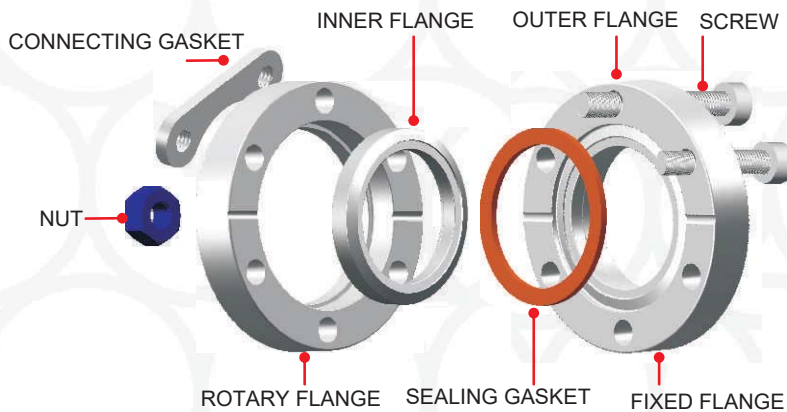
760 Torr $\sim 1 \times 10^{-10}$ Torr- 304/L

760 Torr $\sim 1 \times 10^{-13}$ Torr-316LN ESR

Gasket material: OFHC oxygen-free copper
or silver plated

Temperature range: Celsius -190 degrees to
Celsius 450 degrees

CF



ROTARY FLANGE: recommended to be used in multi-part assembly and has directionality (such as elbows and tee fittings)

FIXED FLANGE - mostly used for combined parts without orientation problems.

CF法兰与管件

提供刀口法兰(CF法兰)尺寸由1.33"到16.5"并有固定式与旋转式的选项。

CF法兰具有最高等级加工质量与符合超高真空的清洁包装，我们提供SUS304/L，316LN等不锈钢材质。

CF法兰采用OFHC(无氧高传导)铜材，简称无氧铜垫片，有效的与CF法兰做密封的结合，最低压力达到 1×10^{-11} Torr。

无氧铜垫片的另外一个优势是可以适用于摄氏450度的环境。然而无氧铜垫片不建议重复使用。

在转换UHV(超高真空)与HV(高真空)的环境中，我们也提供整系列的转换法兰与接头类产品，也请参照转接头系列。

标准规格

应用：超高真空

材质：304/L，316LN

法兰尺寸范围：CF1.33"~16.5"

标准管件径尺寸范围：1/2"~6"

(8"以上的管件为客制化)

压力范围：760 Torr ~ 1×10^{-10} Torr- 304/L

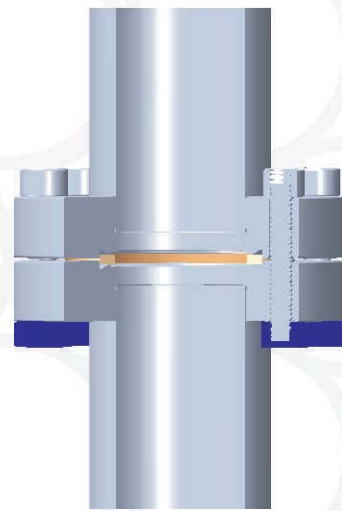
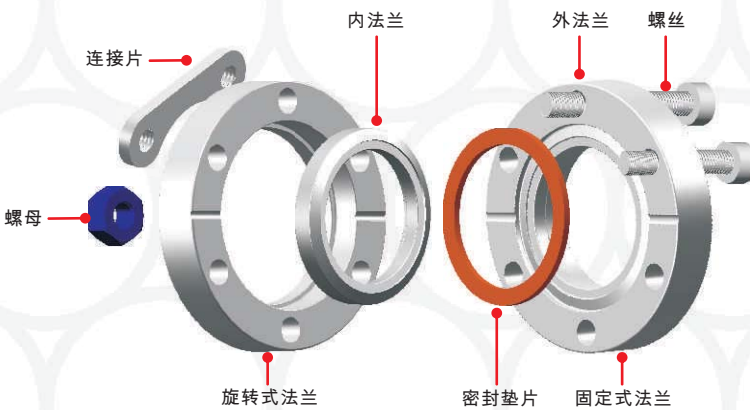
760 Torr ~ 1×10^{-13} Torr-316LN ESR

密封垫片材质：OFHC无氧铜或表面镀银

温度范围：摄氏-190度~450度

清洁与包装

产品所有的焊接点100%的测漏检验，产品清洗经过超音波清洗设备清洗，水质使用合乎半导体要求去离子水。包装环境于高洁净环境做整体产品的组合与包装，确保产品的洁净度。



旋转式法兰-建议采用于多件零件组装，并且有方向性(如弯头与三通管件产品)。

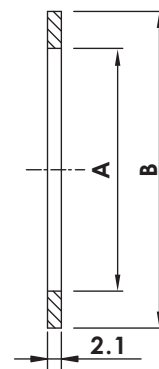
固定式法兰-多用于组合零件无方向性问题。

CF

CF Flanges & Fittings

OFHC 无氧铜垫片 OFHC COPPER SEALS

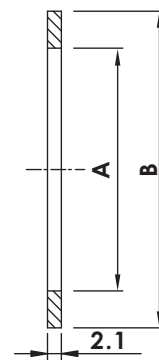
表面：原铜色，蚀刻清洁 Surface: Original copper color, etch clean



Catalogue PN	Flange Size	A	B
CF-CS-133	CF1.33"/CF16	16.20	21.25
CF-CS-212	CF2.12"/CF25	25.65	32.77
CF-CS-275	CF2.75"/CF35	36.80	48.10
CF-CS-275-1	CF2.75"/CF40	39.00	48.10
CF-CS-338	CF3.38"/CF50	51.05	61.60
CF-CS-450	CF4.50"/CF63	63.60	82.35
CF-CS-462	CF4.62"/CF80	76.45	91.39
CF-CS-600	CF6.00"/CF100	101.80	120.45
CF-CS-675	CF6.75"/CF130	127.25	141.40
CF-CS-800	CF8.00"/CF160	152.60	171.25
CF-CS-1000	CF10.00"/CF200	203.40	222.05
CF-CS-1200	CF12.00"/CF250	254.20	272.85
CF-CS-1325	CF13.25"/CF270	274.00	294.34
CF-CS-1400	CF14.00"/CF300	300.00	313.00
CF-CS-1650	CF16.50"/CF350	356.50	376.60

OFHC 无氧铜垫片 OFHC COPPER SEALS

表面：镀银表面 Surface: Silver finish



Catalogue PN	Flange Size	A	B
CF-CS-133-S	CF1.33"/CF16	16.20	21.25
CF-CS-212-S	CF2.12"/CF25	25.65	32.77
CF-CS-275-S	CF2.75"/CF35	36.80	48.10
CF-CS-275-1-S	CF2.75"/CF40	39.00	48.10
CF-CS-338-S	CF3.38"/CF50	51.05	61.60
CF-CS-450-S	CF4.50"/CF63	63.60	82.35
CF-CS-462-S	CF4.62"/CF80	76.45	91.39
CF-CS-600-S	CF6.00"/CF100	101.80	120.45
CF-CS-675-S	CF6.75"/CF130	127.25	141.40
CF-CS-800-S	CF8.00"/CF160	152.60	171.25
CF-CS-1000-S	CF10.00"/CF200	203.40	222.05
CF-CS-1200-S	CF12.00"/CF250	254.20	272.85
CF-CS-1325-S	CF13.25"/CF270	274.00	294.34
CF-CS-1400-S	CF14.00"/CF300	300.00	313.00
CF-CS-1650-S	CF16.50"/CF350	356.50	376.60

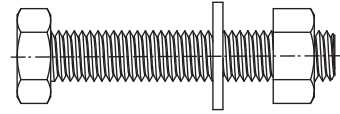
CF Flanges & Fittings

外六角螺丝组-公制牙

HEX HEAD BOLTS - METRIC THREAD

材质：不锈钢 Material: Stainless Steel

组合内容：螺丝，螺母，垫片 Combined content: screw, nut, gasket



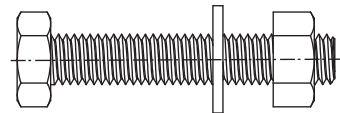
Catalogue PN	Flange Size	Thread	No. of Sets
CF-HB-133M	CF1.33"	M4xP0.70	25
CF-HB-212M	CF2.12"	M6xP1.00	25
CF-HB-275M	CF2.75"	M6xP1.00	25
CF-HB-338M	CF3.38"	M8xP1.25	25
CF-HB-450M	CF4.50"	M8xP1.25	25
CF-HB-600M	CF6.00"	M8xP1.25	25
CF-HB-800M	CF8.00"	M8xP1.25	25
CF-HB-1000M	CF10.0"	M8xP1.25	25

外六角螺丝组-英制牙

HEX HEAD BOLTS - INCH THREAD

材质：不锈钢 Material: Stainless Steel

组合内容：螺丝，螺母，垫片 Combined content: screw, nut, gasket



Catalogue PN	Flange Size	Thread	No. of Sets
CF-HB-133	CF1.33"	8-32 UNC	25
CF-HB-212	CF2.12"	1/4"-28UNF	25
CF-HB-275	CF2.75"	1/4"-28UNF	25
CF-HB-338	CF3.38"	5/16"-24UNF	25
CF-HB-450	CF4.50"	5/16"-24UNF	25
CF-HB-600	CF6.00"	5/16"-24UNF	25
CF-HB-800	CF8.00"	5/16"-24UNF	25
CF-HB-1000	CF10.0"	5/16"-24UNF	25

CF

CF Flanges & Fittings

连接片-公制牙

PLATE NUTS - METRIC THREAD

材质：不锈钢 Material:Stainless Steel



Catalogue PN	Flange Size	Diagram	A	B	C	D	E	ØF
CF-PN-133M	CF1.33"	A	20.30	7.62	13.46	3.20	5.35	M4xP0.7
CF-PN-275M	CF2.75"	A	41.16	12.70	29.46	5.10	6.10	M6xP1.0
CF-PN-338M	CF3.38"	B	44.45	12.70	27.69	5.30	-	M8xP1.25
CF-PN-450M	CF4.50"	B	51.56	12.70	35.30	5.30	-	M8xP1.25
CF-PN-462M	CF4.62"	B	45.80	12.70	31.60	5.30	-	M8xP1.25
CF-PN-600M	CF6.00"	B	41.65	12.70	25.40	5.30	-	M8xP1.25
CF-PN-800M	CF8.00"	B	44.45	12.70	28.45	5.30	-	M8xP1.25
CF-PN-1000M	CF10.00"	B	44.45	12.70	30.23	5.30	-	M8xP1.25

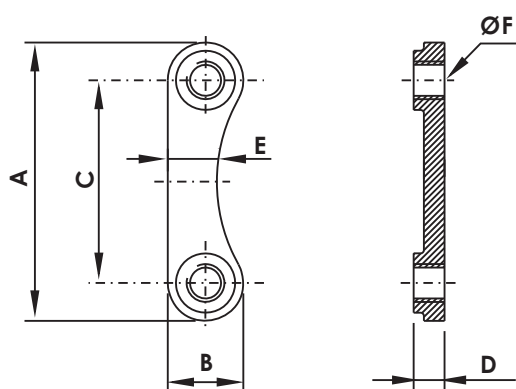


Diagram A

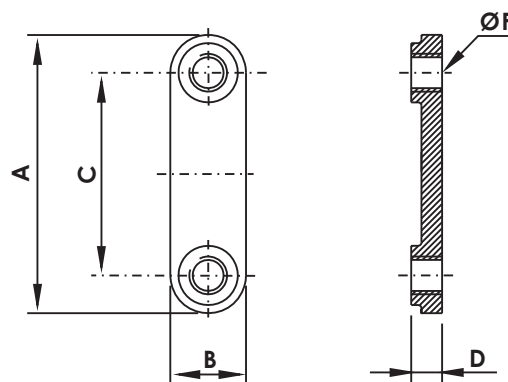


Diagram B

CF Flanges & Fittings

连接片-英制牙

PLATE NUTS - INCH THREAD

材质：不锈钢 Material: Stainless Steel



Catalogue PN	Flange Size	Diagram	A	B	C	D	E	ØF
CF-PN-133	CF1.33"	A	20.30	7.62	13.46	3.20	5.35	#8-32
CF-PN-275	CF2.75"	A	42.16	12.70	29.46	5.10	6.10	1/4-28
CF-PN-338	CF3.38"	B	44.45	12.70	27.69	5.30	-	5/16-24
CF-PN-450	CF4.50"	B	51.56	12.70	35.30	5.30	-	5/16-24
CF-PN-462	CF4.62"	B	45.80	12.70	31.60	5.30	-	5/16-24
CF-PN-600	CF6.00"	B	41.65	12.70	25.40	5.30	-	5/16-24
CF-PN-800	CF8.00"	B	44.45	12.70	28.45	5.30	-	5/16-24
CF-PN-1000	CF10.00"	B	44.45	12.70	30.23	5.30	-	5/16-24

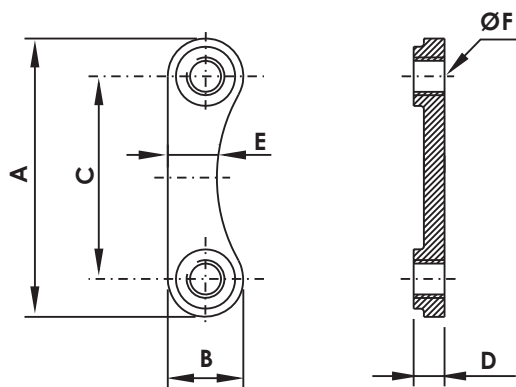


Diagram A

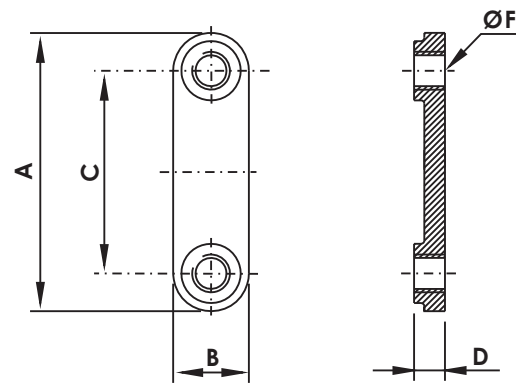


Diagram B

CF

CF Flanges & Fittings

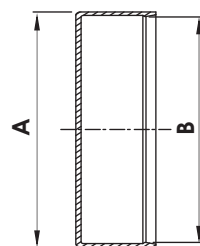
CF 法兰保护盖

CF FLANGE PLASTIC CAP

材质 : PE Material: PE

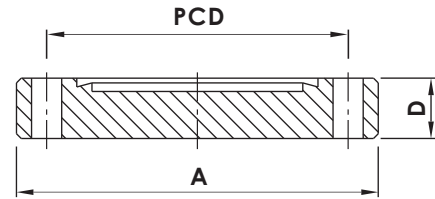


Catalogue PN	Size	A	B
CF-PC-133	CF1.33"	36.20	34.20
CF-PC-212	CF2.12"	56.40	54.00
CF-PC-275	CF2.75"	72.10	70.10
CF-PC-338	CF3.38"	88.50	85.90
CF-PC-450	CF4.50"	118.30	113.50
CF-PC-462	CF4.62"	120.50	117.60
CF-PC-600	CF6.00"	156.40	151.60
CF-PC-675	CF6.75"	173.80	171.60
CF-PC-800	CF8.00"	206.00	202.00
CF-PC-1000	CF10.0"	258.00	254.00
CF-PC-1200	CF12.0"	309.00	304.60
CF-PC-1325	CF13.25"	341.10	336.70
CF-PC-1400	CF14.0"	360.10	355.70



CF

CF Flanges & Fittings



CF 盲法兰-固定式 CF BLANKER

材质：304/L Material:304/L

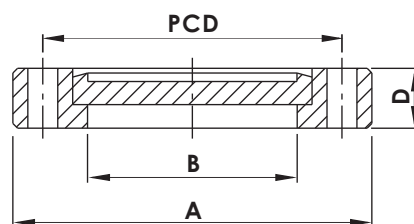
提供攻牙孔与钻孔规格 Offer Tapping hole and drilling holes specifications

Catalogue PN	Type	Flange Size	A (mm)	D (mm)	PCD (mm)	Bolt Holes	Diameter / Thread (mm)
CF-BL-133	Thru Holes	CF1.33"/CF16	33.70	7.60	26.97	6	4.37
CF-BL-133T	Tapped	CF1.33"/CF16	33.70	7.60	26.97	6	8-32
CF-BL-133TM	Tapped(M)	CF1.33"/CF16	33.70	7.60	26.97	6	M4
CF-BL-212	Thru Holes	CF2.12"/CF25	53.80	11.90	41.28	4	6.73
CF-BL-212T	Tapped	CF2.12"/CF25	53.80	11.90	41.28	4	1/4-28
CF-BL-212TM	Tapped(M)	CF2.12"/CF25	53.80	11.90	41.28	4	M6
CF-BL-275	Thru Holes	CF2.75"/CF35	69.30	12.70	58.72	6	6.73
CF-BL-275T	Tapped	CF2.75"/CF35	69.30	12.70	58.72	6	1/4-28
CF-BL-275TM	Tapped(M)	CF2.75"/CF35	69.30	12.70	58.72	6	M6
CF-BL-338	Thru Holes	CF3.38"/CF50	85.30	16.00	72.39	8	8.43
CF-BL-338T	Tapped	CF3.38"/CF50	85.30	16.00	72.39	8	5/16-24
CF-BL-338TM	Tapped(M)	CF3.38"/CF50	85.30	16.00	72.39	8	M8
CF-BL-450	Thru Holes	CF4.50"/CF63	113.50	17.30	92.15	8	8.43
CF-BL-450T	Tapped	CF4.50"/CF63	113.50	17.30	92.15	8	5/16-24
CF-BL-450TM	Tapped(M)	CF4.50"/CF63	113.50	17.30	92.15	8	M8
CF-BL-462	Thru Holes	CF4.62"/CF80	117.00	19.10	102.36	10	8.43
CF-BL-462T	Tapped	CF4.62"/CF80	117.00	19.10	102.36	10	5/16-24
CF-BL-462TM	Tapped(M)	CF4.62"/CF80	117.00	19.10	102.36	10	M8
CF-BL-600	Thru Holes	CF6.00"/CF100	151.60	19.80	130.25	16	8.43
CF-BL-600T	Tapped	CF6.00"/CF100	151.60	19.80	130.25	16	5/16-24
CF-BL-600TM	Tapped(M)	CF6.00"/CF100	151.60	19.80	130.25	16	M8
CF-BL-675	Thru Holes	CF6.75"/CF130	170.69	21.30	151.61	18	8.43
CF-BL-675T	Tapped	CF6.75"/CF130	170.69	21.30	151.61	18	5/16-24
CF-BL-675TM	Tapped(M)	CF6.75"/CF130	170.69	21.30	151.61	18	M8
CF-BL-800	Thru Holes	CF8.00"/CF160	202.44	22.35	181.05	20	8.43
CF-BL-800T	Tapped	CF8.00"/CF160	202.44	22.35	181.05	20	5/16-24
CF-BL-800TM	Tapped(M)	CF8.00"/CF160	202.44	22.35	181.05	20	M8
CF-BL-1000	Thru Holes	CF10.00"/CF200	253.24	24.60	231.85	24	8.43
CF-BL-1000T	Tapped	CF10.00"/CF200	253.24	24.60	231.85	24	5/16-24
CF-BL-1000TM	Tapped(M)	CF10.00"/CF200	253.24	24.60	231.85	24	M8
CF-BL-1200	Thru Holes	CF12.00"/CF250	304.40	25.90	283.97	32	8.43
CF-BL-1200T	Tapped	CF12.00"/CF250	304.40	25.90	283.97	32	5/16-24
CF-BL-1200TM	Tapped(M)	CF12.00"/CF250	304.40	25.90	283.97	32	M8
CF-BL-1325	Thru Holes	CF13.25"/CF270	335.79	28.45	306.32	30	10.49
CF-BL-1325T	Tapped	CF13.25"/CF270	335.79	28.45	306.32	30	3/8-24
CF-BL-1325TM	Tapped(M)	CF13.25"/CF270	335.79	28.45	306.32	30	M10
CF-BL-1400	Thru Holes	CF14.00"/CF300	354.84	28.45	325.37	30	10.49
CF-BL-1400T	Tapped	CF14.00"/CF300	354.84	28.45	325.37	30	3/8-24
CF-BL-1400TM	Tapped(M)	CF14.00"/CF300	354.84	28.45	325.37	30	M10
CF-BL-1650	Thru Holes	CF16.50"/CF350	418.34	28.45	388.87	36	10.49
CF-BL-1650T	Tapped	CF16.50"/CF350	418.34	28.45	388.87	36	3/8-24
CF-BL-1650TM	Tapped(M)	CF16.50"/CF350	418.34	28.45	388.87	36	M10

*NOTE: 316LN MATERIAL AVAILABLE ON REQUEST.

CF

CF Flanges & Fittings



CF 盲法兰-旋转式 CF BLANKER, ROTATABLE

材质：304/L Material:304/L

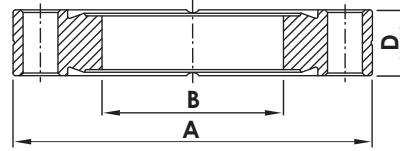
提供攻牙孔与钻孔规格 Offer Tapping holes and drilling holes specifications

CF

Catalogue PN	Type	Flange	A (mm)	B (mm)	D (mm)	PCD (mm)	Bolt Holes	Diameter / Thread (mm)
CF-BL-133R	Thru Holes	CF1.33"/CF16	33.70	19.41	7.60	26.97	6	4.37
CF-BL-133RT	Tapped	CF1.33"/CF16	33.70	19.41	7.60	26.97	6	8-32
CF-BL-133RTM	Tapped(M)	CF1.33"/CF16	33.70	19.41	7.60	26.97	6	M4
CF-BL-212R	Thru Holes	CF2.12"/CF25	53.80	27.94	11.90	41.28	4	6.73
CF-BL-212RT	Tapped	CF2.12"/CF25	53.80	27.94	11.90	41.28	4	1/4-28
CF-BL-212RTM	Tapped(M)	CF2.12"/CF25	53.80	27.94	11.90	41.28	4	M6
CF-BL-275R	Thru Holes	CF2.75"/CF35	69.30	48.31	12.70	58.72	6	6.73
CF-BL-275RT	Tapped	CF2.75"/CF35	69.30	48.31	12.70	58.72	6	1/4-28
CF-BL-275RTM	Tapped(M)	CF2.75"/CF35	69.30	48.31	12.70	58.72	6	M6
CF-BL-338R	Thru Holes	CF3.38"/CF50	85.30	54.50	17.40	72.39	8	8.43
CF-BL-338RT	Tapped	CF3.38"/CF50	85.30	54.50	17.40	72.39	8	5/16-24
CF-BL-338RTM	Tapped(M)	CF3.38"/CF50	85.30	54.50	17.40	72.39	8	M8
CF-BL-450R	Thru Holes	CF4.50"/CF63	113.50	72.39	19.10	92.15	8	8.43
CF-BL-450RT	Tapped	CF4.50"/CF63	113.50	72.39	19.10	92.15	8	5/16-24
CF-BL-450RTM	Tapped(M)	CF4.50"/CF63	113.50	72.39	19.10	92.15	8	M8
CF-BL-462R	Thru Holes	CF4.62"/CF80	117.00	79.71	20.60	102.36	10	8.43
CF-BL-462RT	Tapped	CF4.62"/CF80	117.00	79.71	20.60	102.36	10	5/16-24
CF-BL-462RTM	Tapped(M)	CF4.62"/CF80	117.00	79.71	20.60	102.36	10	M8
CF-BL-600R	Thru Holes	CF6.00"/CF100	151.60	106.17	21.30	130.25	16	8.43
CF-BL-600RT	Tapped	CF6.00"/CF100	151.60	106.17	21.30	130.25	16	5/16-24
CF-BL-600RTM	Tapped(M)	CF6.00"/CF100	151.60	106.17	21.30	130.25	16	M8
CF-BL-675R	Thru Holes	CF6.75"/CF130	170.69	129.50	21.30	151.61	18	8.43
CF-BL-675RT	Tapped	CF6.75"/CF130	170.69	129.50	21.30	151.61	18	5/16-24
CF-BL-675RTM	Tapped(M)	CF6.75"/CF130	170.69	129.50	21.30	151.61	18	M8
CF-BL-800R	Thru Holes	CF8.00"/CF160	202.44	155.70	23.90	181.05	20	8.43
CF-BL-800RT	Tapped	CF8.00"/CF160	202.44	155.70	23.90	181.05	20	5/16-24
CF-BL-800RTM	Tapped(M)	CF8.00"/CF160	202.44	155.70	23.90	181.05	20	M8
CF-BL-1000R	Thru Holes	CF10.00"/CF200	253.24	208.28	24.60	231.85	24	8.43
CF-BL-1000RT	Tapped	CF10.00"/CF200	253.24	208.28	24.60	231.85	24	5/16-24
CF-BL-1000RTM	Tapped(M)	CF10.00"/CF200	253.24	208.28	24.60	231.85	24	M8
CF-BL-1200R	Thru Holes	CF12.00"/CF250	304.04	256.03	25.90	283.97	32	8.43
CF-BL-1200RT	Tapped	CF12.00"/CF250	304.04	256.03	25.90	283.97	32	5/16-24
CF-BL-1200RTM	Tapped(M)	CF12.00"/CF250	304.04	256.03	25.90	283.97	32	M8
CF-BL-1325R	Thru Holes	CF13.25"/CF270	335.79	276.30	28.45	306.32	30	10.49
CF-BL-1325RT	Tapped	CF13.25"/CF270	335.79	276.30	28.45	306.32	30	3/8-24
CF-BL-1325RTM	Tapped(M)	CF13.25"/CF270	335.79	276.30	28.45	306.32	30	M10
CF-BL-1400R	Thru Holes	CF14.00"/CF300	354.84	305.82	28.45	325.37	30	10.49
CF-BL-1400RT	Tapped	CF14.00"/CF300	354.84	305.82	28.45	325.37	30	3/8-24
CF-BL-1400RTM	Tapped(M)	CF14.00"/CF300	354.84	305.82	28.45	325.37	30	M10
CF-BL-1650R	Thru Holes	CF16.50"/CF350	418.34	359.61	28.45	388.87	36	10.49
CF-BL1650RT	Tapped	CF16.50"/CF350	418.34	359.61	28.45	388.87	36	3/8-24
CF-BL1650RTM	Tapped(M)	CF16.50"/CF350	418.34	359.61	28.45	388.87	36	M10

*NOTE: 316LN MATERIAL AVAILABLE ON REQUEST.

CF Flanges & Fittings



CF 双面法兰 CF DOUBLE FACE FLANGES

材质：304/L Material:304/L

通孔规格 Thru holes specifications

Catalogue PN	Type	Flange-Tube	A (mm)	B (mm)	D (mm)	Bolt Holes	Diameter / Thread (mm)
CF-DF-133	Blank	CF1.33"	33.70	-	7.60	6	4.37
CF-DF-133x075	Bored	CF1.33" - 3/4"	33.70	15.88	7.60	6	4.37
CF-DF-212	Blank	CF2.12"	53.80	-	11.90	4	6.73
CF-DF-212x100	Bored	CF2.12" - 1.0"	53.80	25.65	11.90	4	6.73
CF-DF-275	Blank	CF2.75"	69.30	-	12.70	6	6.73
CF-DF-275x150	Bored	CF2.75" - 1.5"	69.30	38.35	12.70	6	6.73
CF-DF-338	Blank	CF3.38"	85.30	-	16.00	8	8.43
CF-DF-338x200	Bored	CF3.38" - 2.0"	85.30	51.05	16.00	8	8.43
CF-DF-450	Blank	CF4.50"	113.50	-	17.40	8	8.43
CF-DF-450x250	Bored	CF4.50" - 2.5"	113.50	63.75	17.40	8	8.43
CF-DF-462	Blank	CF4.62"	117.00	-	19.10	10	8.43
CF-DF-462x300	Bored	CF4.62" - 3.0"	117.00	79.71	19.10	10	8.43
CF-DF-600	Blank	CF6.00"	151.60	-	19.80	16	8.43
CF-DF-600x400	Bored	CF6.00" - 4.0"	151.60	101.85	19.80	16	8.43
CF-DF-675	Blank	CF6.75"	170.69	-	21.34	18	8.43
CF-DF-675x500	Bored	CF6.75" - 5.0"	170.69	127.25	21.34	18	8.43
CF-DF-800	Blank	CF8.00"	202.44	-	22.35	20	8.43
CF-DF-800x600	Bored	CF8.00" - 6.0"	202.44	152.65	22.35	20	8.43
CF-DF-1000	Blank	CF10.0"	253.24	-	24.60	24	8.43
CF-DF-1000x800	Bored	CF10.0" - 8.0"	253.24	203.45	24.60	24	8.43
CF-DF-1325	Blank	CF13.25"	335.79	-	28.45	30	10.49
CF-DF-1325x1000	Bored	CF13.25" - 10"	335.79	254.50	28.45	30	10.49

*NOTE: 316LN MATERIAL AVAILABLE ON REQUEST.

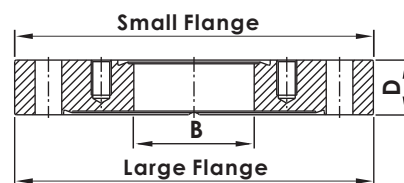
CF

CF Flanges & Fittings

CF 无直部大小头 CF ZERO LENGTH REDUCERS

材质 : 304/L Material:304/L

*NOTE: 316LN MATERIAL AVAILABLE ON REQUEST.



CF

Catalogue PN	Large Flange	Small Flange	Tube Size	B (mm)	D (mm)
CF-ZL-212x133N	CF2.12" Tapped holes	CF1.33" Tapped holes	3/4"	15.75	11.90
CF-ZL-275x133Z	CF2.75" Thru holes	CF1.33" Tapped holes	3/4"	15.75	12.70
CF-ZL-275x212N	CF2.75" Tapped holes	CF2.12" Tapped holes	1.0"	25.40	12.70
CF-ZL-338x133Z	CF3.38" Thru holes	CF1.33" Tapped holes	3/4"	15.75	16.00
CF-ZL-338x212Z	CF3.38" Thru holes	CF2.12" Tapped holes	1.0"	25.40	16.00
CF-ZL-338x275N	CF3.38" Tapped holes	CF2.75" Tapped holes	1.5"	38.10	16.00
CF-ZL-450x133Z	CF4.50" Thru holes	CF1.33" Tapped holes	3/4"	15.75	17.40
CF-ZL-450x212Z	CF4.50" Thru holes	CF2.12" Tapped holes	1.0"	25.40	17.40
CF-ZL-450x275Z	CF4.50" Thru holes	CF2.75" Tapped holes	1.5"	38.10	17.40
CF-ZL-450x338N	CF4.50" Tapped holes	CF3.38" Tapped holes	2.0"	50.80	17.40
CF-ZL-462x133Z	CF4.62" Thru holes	CF1.33" Tapped holes	3/4"	15.75	19.10
CF-ZL-462x212Z	CF4.62" Thru holes	CF2.12" Tapped holes	1.0"	25.40	19.10
CF-ZL-462x275Z	CF4.62" Thru holes	CF2.75" Tapped holes	1.5"	38.10	19.10
CF-ZL-462x338Z	CF4.62" Thru holes	CF3.38" Tapped holes	2.0"	50.80	19.10
CF-ZL-600x133Z	CF6.00" Thru holes	CF1.33" Tapped holes	3/4"	15.75	19.80
CF-ZL-600x212Z	CF6.00" Thru holes	CF2.12" Tapped holes	1.0"	25.40	19.80
CF-ZL-600x275Z	CF6.00" Thru holes	CF2.75" Tapped holes	1.5"	38.10	19.80
CF-ZL-600x338Z	CF6.00" Thru holes	CF3.38" Tapped holes	2.0"	50.80	19.80
CF-ZL-600x450Z	CF6.00" Thru holes	CF4.50" Tapped holes	2.5"	63.50	19.80
CF-ZL-600x462N	CF6.00" Tapped holes	CF4.62" Tapped holes	3.0"	76.20	19.80
CF-ZL-675x275Z	CF6.75" Thru holes	CF2.75" Tapped holes	1.5"	38.10	21.34
CF-ZL-675x450Z	CF6.75" Thru holes	CF4.50" Tapped holes	2.5"	63.50	21.34
CF-ZL-800x133Z	CF8.00" Thru holes	CF1.33" Tapped holes	3/4"	15.75	22.35
CF-ZL-800x275Z	CF8.00" Thru holes	CF2.75" Tapped holes	1.5"	38.10	22.35
CF-ZL-800x450Z	CF8.00" Thru holes	CF4.50" Tapped holes	2.5"	63.50	22.35
CF-ZL-800x600Z	CF8.00" Thru holes	CF6.00" Tapped holes	4.0"	101.60	22.35
CF-ZL-1000x133Z	CF10.00" Thru holes	CF1.33" Tapped holes	3/4"	15.75	24.60
CF-ZL-1000x275Z	CF10.00" Thru holes	CF2.75" Tapped holes	1.5"	38.10	24.60
CF-ZL-1000x450Z	CF10.00" Thru holes	CF4.50" Tapped holes	2.5"	63.50	24.60
CF-ZL-1000x600Z	CF10.00" Thru holes	CF6.00" Tapped holes	4.0"	101.60	24.60
CF-ZL-1000x800Z	CF10.00" Thru holes	CF8.00" Tapped holes	6.0"	152.40	24.60
CF-ZL-1325x133Z	CF13.25" Thru holes	CF1.33" Tapped holes	3/4"	15.75	28.45
CF-ZL-1325x275Z	CF13.25" Thru holes	CF2.75" Tapped holes	1.5"	38.10	28.45
CF-ZL-1325x450Z	CF13.25" Thru holes	CF4.50" Tapped holes	2.5"	63.50	28.45
CF-ZL-1325x600Z	CF13.25" Thru holes	CF6.00" Tapped holes	4.0"	101.60	28.45
CF-ZL-1325x800Z	CF13.25" Thru holes	CF8.00" Tapped holes	6.0"	152.40	28.45
CF-ZL-1325x1000Z	CF13.25" Thru holes	CF10.00" Tapped holes	8.0"	203.20	28.45

The last digit of part number means optional thread types shown as follows.

T: Both Small Flange and Large Flange are Metric Tapped holes.

N: Both Small Flange and Large Flange are Inch Tapped holes.

Y: Small Flange(Metric tapped holes)+Large Flange(Thru holes)

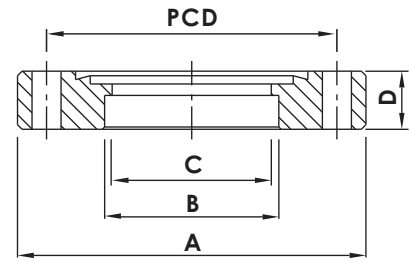
Z: Small Flange(Inch tapped holes)+Large Flange(Thru holes)

CF Flanges & Fittings

CF 口径法兰-固定式 CF BORED FLANGES

材质：304/L Material: 304/L

提供攻牙孔与钻孔规格 Offer tapping holes and drilling holes specifications

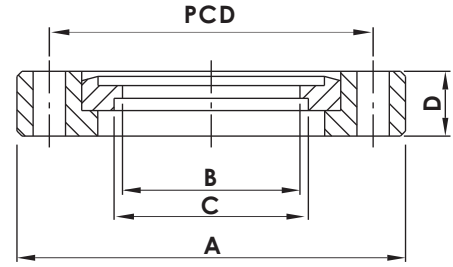


Catalogue PN	Type	Flange-Tube	A (mm)	B (mm)	C (mm)	D (mm)	PCD (mm)	Bolt Holes	Diameter / Thread (mm)
CF-BF-133x038	Thru Holes	CF1.33"-0.38"	33.70	9.65	-	7.60	26.97	6	4.37
CF-BF-133x038T	Tapped	CF1.33"-0.38"	33.70	9.65	-	7.60	26.97	6	8-32
CF-BF-133x038TM	Tapped(M)	CF1.33"-0.38"	33.70	9.65	-	7.60	26.97	6	M4
CF-BF-133x050	Thru Holes	CF1.33"-0.50"	33.70	12.83	-	7.60	26.97	6	4.37
CF-BF-133x050T	Tapped	CF1.33"-0.50"	33.70	12.83	-	7.60	26.97	6	8-32
CF-BF-133x050TM	Tapped(M)	CF1.33"-0.50"	33.70	12.83	-	7.60	26.97	6	M4
CF-BF-133x075	Thru Holes	CF1.33"-0.75"	33.70	19.30	16.00	7.60	26.97	6	4.37
CF-BF-133x075T	Tapped	CF1.33"-0.75"	33.70	19.30	16.00	7.60	26.97	6	8-32
CF-BF-133x075TM	Tapped(M)	CF1.33"-0.75"	33.70	19.30	16.00	7.60	26.97	6	M4
CF-BF-212x100	Thru Holes	CF2.12"-1.00"	53.80	25.65	23.90	11.90	41.28	4	6.73
CF-BF-212x100T	Tapped	CF2.12"-1.00"	53.80	25.65	23.90	11.90	41.28	4	1/4-28
CF-BF-212x100TM	Tapped(M)	CF2.12"-1.00"	53.80	25.65	23.90	11.90	41.28	4	M6
CF-BF-275x075	Thru Holes	CF2.75"-0.75"	69.30	19.30	16.00	12.70	58.72	6	6.73
CF-BF-275x075T	Tapped	CF2.75"-0.75"	69.30	19.30	16.00	12.70	58.72	6	1/4-28
CF-BF-275x075TM	Tapped(M)	CF2.75"-0.75"	69.30	19.30	16.00	12.70	58.72	6	M6
CF-BF-275x100	Thru Holes	CF2.75"-1.00"	69.30	25.65	22.10	12.70	58.72	6	6.73
CF-BF-275x100T	Tapped	CF2.75"-1.00"	69.30	25.65	22.10	12.70	58.72	6	1/4-28
CF-BF-275x100TM	Tapped(M)	CF2.75"-1.00"	69.30	25.65	22.10	12.70	58.72	6	M6
CF-BF-275x150	Thru Holes	CF2.75"-1.50"	69.30	38.35	36.60	12.70	58.72	6	6.73
CF-BF-275x150T	Tapped	CF2.75"-1.50"	69.30	38.35	36.60	12.70	58.72	6	1/4-28
CF-BF-275x150TM	Tapped(M)	CF2.75"-1.50"	69.30	38.35	36.60	12.70	58.72	6	M6
CF-BF-275x175	Thru Holes	CF2.75"-1.75"	69.30	44.70	41.20	12.70	58.72	6	6.73
CF-BF-275x175T	Tapped	CF2.75"-1.75"	69.30	44.70	41.20	12.70	58.72	6	1/4-28
CF-BF-275x175TM	Tapped(M)	CF2.75"-1.75"	69.30	44.70	41.20	12.70	58.72	6	M6
CF-BF-338x200	Thru Holes	CF3.38"-2.00"	85.30	51.05	49.30	17.40	72.39	8	8.43
CF-BF-338x200T	Tapped	CF3.38"-2.00"	85.30	51.05	49.30	17.40	72.39	8	5/16-24
CF-BF-338x200TM	Tapped(M)	CF3.38"-2.00"	85.30	51.05	49.30	17.40	72.39	8	M8
CF-BF-450x250	Thru Holes	CF4.50"-2.50"	113.50	63.75	62.00	17.40	92.15	8	8.43
CF-BF-450x250T	Tapped	CF4.50"-2.50"	113.50	63.75	62.00	17.40	92.15	8	5/16-24
CF-BF-450x250TM	Tapped(M)	CF4.50"-2.50"	113.50	63.75	62.00	17.40	92.15	8	M8
CF-BF-462x300	Thru Holes	CF4.62"-3.00"	117.00	76.45	74.70	20.60	102.36	10	8.43
CF-BF-462x300T	Tapped	CF4.62"-3.00"	117.00	76.45	74.70	20.60	102.36	10	5/16-24
CF-BF-462x300TM	Tapped(M)	CF4.62"-3.00"	117.00	76.45	74.70	20.60	102.36	10	M8
CF-BF-600x400	Thru Holes	CF6.00"-4.00"	151.60	101.85	99.60	19.80	130.25	16	8.43
CF-BF-600x400T	Tapped	CF6.00"-4.00"	151.60	101.85	99.60	19.80	130.25	16	5/16-24
CF-BF-600x400TM	Tapped(M)	CF6.00"-4.00"	151.60	101.85	99.60	19.80	130.25	16	M8
CF-BF-675x500	Thru Holes	CF6.75"-5.00"	170.69	127.25	123.83	21.34	151.61	18	8.43
CF-BF-675x500T	Tapped	CF6.75"-5.00"	170.69	127.25	123.83	21.34	151.61	18	5/16-24
CF-BF-675x500TM	Tapped(M)	CF6.75"-5.00"	170.69	127.25	123.83	21.34	151.61	18	M8
CF-BF-800x600	Thru Holes	CF8.00"-6.00"	202.44	152.91	150.40	22.35	181.05	20	8.43
CF-BF-800x600T	Tapped	CF8.00"-6.00"	202.44	152.91	150.40	22.35	181.05	20	5/16-24
CF-BF-800x600TM	Tapped(M)	CF8.00"-6.00"	202.44	152.91	150.40	22.35	181.05	20	M8
CF-BF-1000x800	Thru Holes	CF10.0"-8.00"	253.24	203.71	200.40	24.64	231.85	24	8.43
CF-BF-1000x800T	Tapped	CF10.0"-8.00"	253.24	203.71	200.40	24.64	231.85	24	5/16-24
CF-BF-1000x800TM	Tapped(M)	CF10.0"-8.00"	253.24	203.71	200.40	24.64	231.85	24	M8
CF-BF-1200x1000	Thru Holes	CF12.0"-10.0"	304.04	254.51	250.95	25.90	283.97	32	8.43
CF-BF-1200x1000T	Tapped	CF12.0"-10.0"	304.04	254.51	250.95	25.90	283.97	32	5/16-24
CF-BF-1200x1000TM	Tapped(M)	CF12.0"-10.0"	304.04	254.51	250.95	25.90	283.97	32	M8
CF-BF-1325x1000	Thru Holes	CF13.25"-10.0"	335.79	254.51	250.95	28.45	306.32	30	10.49
CF-BF-1325x1000T	Tapped	CF13.25"-10.0"	335.79	254.51	250.95	28.45	306.32	30	3/8-24
CF-BF-1325x1000TM	Tapped(M)	CF13.25"-10.0"	335.79	254.51	250.95	28.45	306.32	30	M10
CF-BF-1400x1200	Thru Holes	CF14.00"-12.0"	354.84	305.31	301.75	28.45	325.37	30	10.49
CF-BF-1400x1200T	Tapped	CF14.00"-12.0"	354.84	305.31	301.75	28.45	325.37	30	3/8-24
CF-BF-1400x1200TM	Tapped(M)	CF14.00"-12.0"	354.84	305.31	301.75	28.45	325.37	30	M10
CF-BF-1650x1400	Thru Holes	CF16.50"-14.0"	418.34	356.11	352.00	28.45	388.87	36	10.49
CF-BF-1650x1400T	Tapped	CF16.50"-14.0"	418.34	356.11	352.00	28.45	388.87	36	3/8-24
CF-BF-1650x1400TM	Tapped(M)	CF16.50"-14.0"	418.34	356.11	352.00	28.45	388.87	36	M10

*NOTE: 316LN MATERIAL AVAILABLE ON REQUEST.

CF

CF Flanges & Fittings



CF 通径法兰-旋转式 CF BORED FLANGES, ROTATABLE

材质：304/L Material: 304/L

提供攻牙孔与钻孔规格 Offer tapping holes and drilling holes specifications

CF

Catalogue PN	Type	Flange-Tube	A (mm)	B (mm)	C (mm)	D (mm)	PCD (mm)	Bolt Holes	Diameter / Thread (mm)
CF-BF-133x050R	Thru Holes	CF1.33"-0.50"	33.70	12.83	12.83	7.60	26.97	6	4.37
CF-BF-133x050RT	Tapped	CF1.33"-0.50"	33.70	12.83	12.83	7.60	26.97	6	8-32
CF-BF-133x050RTM	Tapped(M)	CF1.33"-0.50"	33.70	12.83	12.83	7.60	26.97	6	M4
CF-BF-133x075R	Thru Holes	CF1.33"-0.75"	33.70	16.00	19.30	7.60	26.97	6	4.37
CF-BF-133x075RT	Tapped	CF1.33"-0.75"	33.70	16.00	19.30	7.60	26.97	6	8-32
CF-BF-133x075RTM	Tapped(M)	CF1.33"-0.75"	33.70	16.00	19.30	7.60	26.97	6	M4
CF-BF-212x100R	Thru Holes	CF2.12"-1.00"	53.80	23.90	25.91	11.90	41.28	4	6.73
CF-BF-212x100RT	Tapped	CF2.12"-1.00"	53.80	23.90	25.91	11.90	41.28	4	1/4-28
CF-BF-212x100RTM	Tapped(M)	CF2.12"-1.00"	53.80	23.90	25.91	11.90	41.28	4	M6
CF-BF-275x075R	Thru Holes	CF2.75"-0.75"	69.30	16.00	19.30	12.70	58.72	6	6.73
CF-BF-275x075RT	Tapped	CF2.75"-0.75"	69.30	16.00	19.30	12.70	58.72	6	1/4-28
CF-BF-275x075RTM	Tapped(M)	CF2.75"-0.75"	69.30	16.00	19.30	12.70	58.72	6	M6
CF-BF-275x150R	Thru Holes	CF2.75"-1.50"	69.30	36.60	38.61	12.70	58.72	6	6.73
CF-BF-275x150RT	Tapped	CF2.75"-1.50"	69.30	36.60	38.61	12.70	58.72	6	1/4-28
CF-BF-275x150RTM	Tapped(M)	CF2.75"-1.50"	69.30	36.60	38.61	12.70	58.72	6	M6
CF-BF-338x200R	Thru Holes	CF3.38"-2.00"	85.30	49.30	51.31	17.40	72.39	8	8.43
CF-BF-338x200RT	Tapped	CF3.38"-2.00"	85.30	49.30	51.31	17.40	72.39	8	5/16-24
CF-BF-338x200RTM	Tapped(M)	CF3.38"-2.00"	85.30	49.30	51.31	17.40	72.39	8	M8
CF-BF-450x250R	Thru Holes	CF4.50"-2.50"	113.50	62.00	64.01	19.10	92.15	8	8.43
CF-BF-450x250RT	Tapped	CF4.50"-2.50"	113.50	62.00	64.01	19.10	92.15	8	5/16-24
CF-BF-450x250RTM	Tapped(M)	CF4.50"-2.50"	113.50	62.00	64.01	19.10	92.15	8	M8
CF-BF-462x300R	Thru Holes	CF4.62"-3.00"	117.00	74.70	76.71	20.60	102.36	10	8.43
CF-BF-462x300RT	Tapped	CF4.62"-3.00"	117.00	74.70	76.71	20.60	102.36	10	5/16-24
CF-BF-462x300RTM	Tapped(M)	CF4.62"-3.00"	117.00	74.70	76.71	20.60	102.36	10	M8
CF-BF-600x400R	Thru Holes	CF6.00"-4.00"	151.60	99.60	102.11	21.30	130.25	16	8.43
CF-BF-600x400RT	Tapped	CF6.00"-4.00"	151.60	99.60	102.11	21.30	130.25	16	5/16-24
CF-BF-600x400RTM	Tapped(M)	CF6.00"-4.00"	151.60	99.60	102.11	21.30	130.25	16	M8
CF-BF-675x500R	Thru Holes	CF6.75"-5.00"	170.69	125.00	127.51	21.30	151.61	18	8.43
CF-BF-675x500RT	Tapped	CF6.75"-5.00"	170.69	125.00	127.51	21.30	151.61	18	5/16-24
CF-BF-675x500RTM	Tapped(M)	CF6.75"-5.00"	170.69	125.00	127.51	21.30	151.61	18	M8
CF-BF-800x600R	Thru Holes	CF8.00"-6.00"	202.44	150.40	152.91	23.90	181.05	20	8.43
CF-BF-800x600RT	Tapped	CF8.00"-6.00"	202.44	150.40	152.91	23.90	181.05	20	5/16-24
CF-BF-800x600RTM	Tapped(M)	CF8.00"-6.00"	202.44	150.40	152.91	23.90	181.05	20	M8
CF-BF-1000x800R	Thru Holes	CF10.0"-8.00"	253.24	200.40	203.71	24.60	231.85	24	8.43
CF-BF-1000x800RT	Tapped	CF10.0"-8.00"	253.24	200.40	203.71	24.60	231.85	24	5/16-24
CF-BF-1000x800RTM	Tapped(M)	CF10.0"-8.00"	253.24	200.40	203.71	24.60	231.85	24	M8
CF-BF-1200x1000R	Thru Holes	CF12.0"-10.0"	304.04	250.95	254.51	25.90	283.97	32	8.43
CF-BF-1200x1000RT	Tapped	CF12.0"-10.0"	304.04	250.95	254.51	25.90	283.97	32	5/16-24
CF-BF-1200x1000RTM	Tapped(M)	CF12.0"-10.0"	304.04	250.95	254.51	25.90	283.97	32	M8
CF-BF-1325x1000R	Thru Holes	CF13.25"-10.0"	335.79	250.95	254.51	28.45	306.32	30	10.49
CF-BF-1325x1000RT	Tapped	CF13.25"-10.0"	335.79	250.95	254.51	28.45	306.32	30	3/8-24
CF-BF-1325x1000RTM	Tapped(M)	CF13.25"-10.0"	335.79	250.95	254.51	28.45	306.32	30	M10
CF-BF-1400x1200R	Thru Holes	CF14.00"-12.0"	354.84	301.75	305.31	28.45	325.37	30	10.49
CF-BF-1400x1200RT	Tapped	CF14.00"-12.0"	354.84	301.75	305.31	28.45	325.37	30	3/8-24
CF-BF-1400x1200RTM	Tapped(M)	CF14.00"-12.0"	354.84	301.75	305.31	28.45	325.37	30	M10
CF-BF-1650x1400R	Thru Holes	CF16.50"-14.0"	418.34	352.55	356.11	28.45	388.87	36	10.49
CF-BF-1650x1400RT	Tapped	CF16.50"-14.0"	418.34	352.55	356.11	28.45	388.87	36	3/8-24
CF-BF-1650x1400RTM	Tapped(M)	CF16.50"-14.0"	418.34	352.55	356.11	28.45	388.87	36	M10

*NOTE: 316LN MATERIAL AVAILABLE ON REQUEST.

CF Flanges & Fittings

CF 半短管

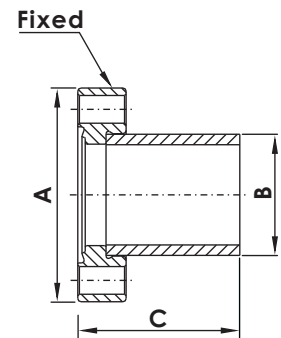
CF FLANGE HALF NIPPLES

材质：304/L Material: 304/L

管表面处理：喷砂 Tube surface: sandblasting



Catalogue PN	Flange Size	A	B	C
CF-HN-133	CF1.33"	1.33"	19.05	38.10
CF-HN-212	CF2.12"	2.12"	25.40	52.07
CF-HN-275	CF2.75"	2.75"	38.10	62.48
CF-HN-338	CF3.38"	3.38"	50.80	81.79
CF-HN-450	CF4.50"	4.50"	63.50	85.85
CF-HN-462	CF4.62"	4.62"	76.20	89.66
CF-HN-600	CF6.00"	6.00"	101.60	109.73
CF-HN-675	CF6.75"	6.75"	127.00	109.70
CF-HN-800	CF8.00"	8.00"	152.40	139.70
CF-HN-1000	CF10.00"	10.00"	203.20	203.20



CF 短管

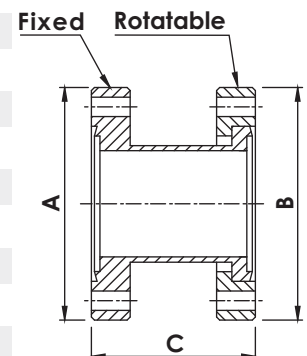
CF FLANGE FULL NIPPLES

材质：304/L Material: 304/L

管表面处理：喷砂 Tube surface: sandblasting



Catalogue PN	Flange Size	A	B	C
CF-FN-133	CF1.33"	1.33"	1.33"	76.20
CF-FN-212	CF2.12"	2.12"	2.12"	104.14
CF-FN-275	CF2.75"	2.75"	2.75"	124.97
CF-FN-338	CF3.38"	3.38"	3.38"	163.58
CF-FN-450	CF4.50"	4.50"	4.50"	171.70
CF-FN-462	CF4.62"	4.62"	4.62"	179.32
CF-FN-600	CF6.00"	6.00"	6.00"	219.46
CF-FN-675	CF6.75"	6.75"	6.75"	214.90
CF-FN-800	CF8.00"	8.00"	8.00"	200.00
CF-FN-1000	CF10.00"	10.00"	10.00"	406.40



NOTE: 316LNSS (316L TUBE+316LN FLANGE) MATERIAL AVAILABLE ON REQUEST.
NOTE: POLISHED AND ELECTRO- POLISHED TUBE FINISHES AVAILABLE ON REQUEST.

CF

CF Flanges & Fittings

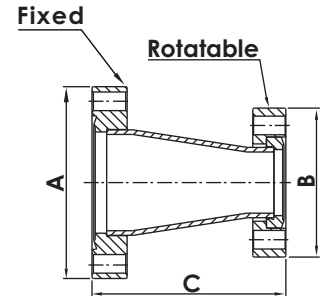
CF 同心缩管大小头 CF FLANGE CONICAL REDUCERS

材质：304/L Material: 304/L

管表面处理：喷砂 Tube surface: sandblasting



Catalogue PN	Flange Size	A	B	C
CF-CR-212x133	CF2.12"/1.33"	2.12"	1.33"	51.90
CF-CR-275x133	CF2.75"/1.33"	2.75"	1.33"	78.30
CF-CR-275x212	CF2.75"/2.12"	2.75"	2.12"	69.90
CF-CR-338x212	CF3.38"/2.12"	3.38"	2.12"	70.30
CF-CR-338x275	CF3.38"/2.75"	3.38"	2.75"	71.30
CF-CR-450x275	CF4.50"/2.75"	4.50"	2.75"	75.20
CF-CR-450x338	CF4.50"/3.38"	4.50"	3.38"	75.60
CF-CR-462x275	CF4.62"/2.75"	4.62"	2.75"	104.50
CF-CR-462x338	CF4.62"/3.38"	4.62"	3.38"	104.90
CF-CR-462x450	CF4.62"/4.50"	4.62"	4.50"	108.70
CF-CR-600x338	CF6.00"/3.38"	6.00"	3.38"	108.90
CF-CR-600x450	CF6.00"/4.50"	6.00"	4.50"	112.70
CF-CR-600x462	CF6.00"/4.62"	6.00"	4.62"	110.30



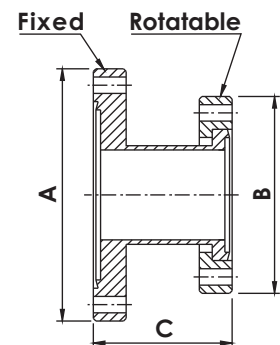
CF 直管大小头 CF FLANGE STRAIGHT REDUCERS

材质：304/L Material: 304/L

管表面处理：喷砂 Tube surface: sandblasting



Catalogue PN	Flange Size	A	B	C
CF-SR-275x133	CF2.75"/1.33"	2.75"	1.33"	45.00
CF-SR-450x133	CF4.50"/1.33"	4.50"	1.33"	70.00
CF-SR-450x275	CF4.50"/2.75"	4.50"	2.75"	75.00
CF-SR-600x275	CF6.00"/2.75"	6.00"	2.75"	127.00
CF-SR-600x450	CF6.00"/4.50"	6.00"	4.50"	95.00
CF-SR-800x275	CF8.00"/2.75"	8.00"	2.75"	127.00
CF-SR-800x450	CF8.00"/4.50"	8.00"	4.50"	127.00
CF-SR-800x600	CF8.00"/6.00"	8.00"	6.00"	127.00
CF-SR-1000x275	CF10.00"/2.75"	10.00"	2.75"	127.00
CF-SR-1000x450	CF10.00"/4.50"	10.00"	4.50"	127.00
CF-SR-1000x600	CF10.00"/6.00"	10.00"	6.00"	127.00
CF-SR-1000x800	CF10.00"/8.00"	10.00"	8.00"	127.00



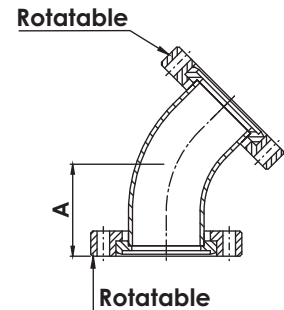
NOTE: 316LNSS (316L TUBE+316LN FLANGE) MATERIAL AVAILABLE ON REQUEST.
NOTE: POLISHED AND ELECTRO- POLISHED TUBE FINISHES AVAILABLE ON REQUEST.

CF Flanges & Fittings

CF 45° 弯头 CF 45° ELBOWS

材质：304/L Material: 304/L

管表面处理：喷砂 Tube surface: sandblasting

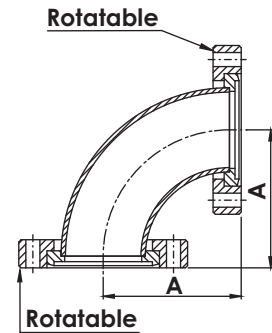


Catalogue PN	Flange Size	A
CF-45EL-133	CF1.33"	23.80
CF-45EL-212	CF2.12"	28.90
CF-45EL-275	CF2.75"	44.20
CF-45EL-338	CF3.38"	52.50
CF-45EL-450	CF4.50"	85.60
CF-45EL-462	CF4.62"	100.60
CF-45EL-600	CF6.00"	132.50

CF 90° 弯头 CF 90° ELBOWS

材质：304/L Material: 304/L

管表面处理：喷砂 Tube surface: sandblasting

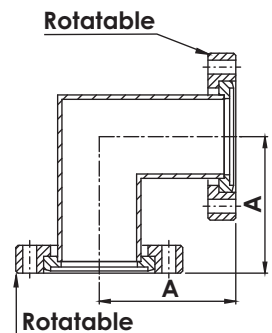


Catalogue PN	Flange Size	A
CF-90EL-133	CF1.33"	38.10
CF-90EL-212	CF2.12"	42.40
CF-90EL-275	CF2.75"	62.50
CF-90EL-338	CF3.38"	81.80
CF-90EL-450	CF4.50"	104.60
CF-90EL-462	CF4.62"	121.40
CF-90EL-600	CF6.00"	163.60

CF 90° 直角弯头 CF 90° MITERED ELBOWS

材质：304/L Material: 304/L

管表面处理：喷砂 Tube surface: sandblasting



Catalogue PN	Flange Size	A
CF-90MEL-133	CF1.33"	38.10
CF-90MEL-212	CF2.12"	52.00
CF-90MEL-275	CF2.75"	62.50
CF-90MEL-338	CF3.38"	81.80
CF-90MEL-450	CF4.50"	85.90
CF-90MEL-462	CF4.62"	89.70
CF-90MEL-600	CF6.00"	109.70

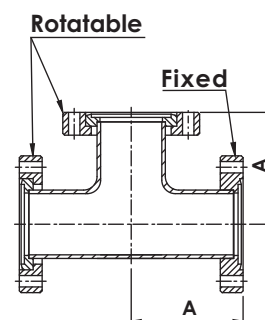
NOTE: 316LNSS (316L TUBE+316LN FLANGE) MATERIAL AVAILABLE ON REQUEST.
NOTE: POLISHED AND ELECTRO- POLISHED TUBE FINISHES AVAILABLE ON REQUEST.

CF Flanges & Fittings

CF 同径三通 CF EQUAL TEES

材质：304/L Material: 304/L

管表面处理：喷砂 Tube surface: sandblasting

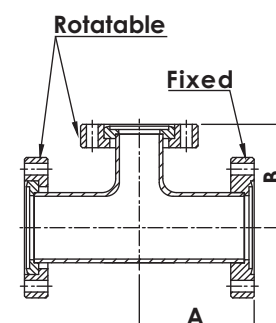


Catalogue PN	Flange Size	A
CF-ET-133	CF1.33"	38.10
CF-ET-212	CF2.12"	52.05
CF-ET-275	CF2.75"	62.50
CF-ET-338	CF3.38"	81.80
CF-ET-450	CF4.50"	85.85
CF-ET-450-L	CF4.50"-L	104.65
CF-ET-462	CF4.62"	89.70
CF-ET-600	CF6.00"	109.70
CF-ET-600-L	CF6.00"-L	134.88

CF 异径三通 CF REDUCING TEES

材质：304/L Material: 304/L

管表面处理：喷砂 Tube surface: sandblasting



Catalogue PN	Flange Size	A	B
CF-RT-275x133	CF2.75"/1.33"	62.50	47.50
CF-RT-275x212	CF2.75"/2.12"	62.50	58.20
CF-RT-338x133	CF3.38"/1.33"	81.80	54.10
CF-RT-338x275	CF3.38"/2.75"	81.80	68.80
CF-RT-450x275	CF4.50"/2.75"	85.90	75.20
CF-RT-450x338	CF4.50"/3.38"	85.90	88.40
CF-RT-462x338	CF4.62"/3.38"	89.70	94.70
CF-RT-462x450	CF4.62"/4.50"	89.70	92.20
CF-RT-600x275	CF6.00"/2.75"	109.70	94.20
CF-RT-600x338	CF6.00"/3.38"	109.70	107.40
CF-RT-600x450	CF6.00"/4.50"	109.70	104.90
CF-RT-600x462	CF6.00"/4.62"	109.70	102.40

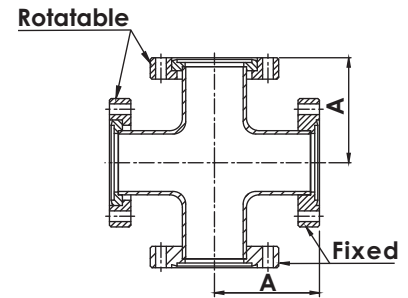
NOTE: 316LNSS (316L TUBE+316LN FLANGE) MATERIAL AVAILABLE ON REQUEST.
NOTE: POLISHED AND ELECTRO- POLISHED TUBE FINISHES AVAILABLE ON REQUEST.

CF Flanges & Fittings

CF 同径四通 CF 4-WAY CROSSES

材质：304/L Material: 304/L

管表面处理：喷砂 Tube surface: sandblasting

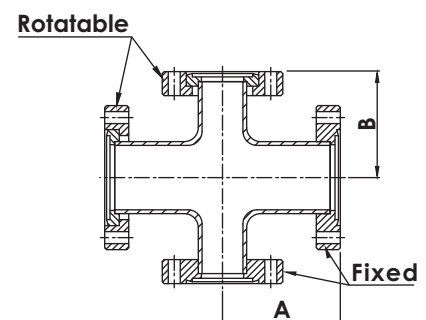


Catalogue PN	Flange Size	A
CF-4C-133	CF1.33"	38.10
CF-4C-212	CF2.12"	52.00
CF-4C-275	CF2.75"	62.50
CF-4C-338	CF3.38"	81.80
CF-4C-450	CF4.50"	85.90
CF-4C-462	CF4.62"	89.70
CF-4C-600	CF6.00"	109.70

CF 异径四通 CF 4-WAY REDUCING CROSSES

材质：304/L Material: 304/L

管表面处理：喷砂 Tube surface: sandblasting



Catalogue PN	Flange Size	A	B
CF-4RC-275x133	CF2.75"/1.33"	62.50	47.50
CF-4RC-275x212	CF2.75"/2.12"	62.50	58.20
CF-4RC-338x133	CF3.38"/1.33"	81.80	54.10
CF-4RC-338x275	CF3.38"/2.75"	81.80	68.80
CF-4RC-450x275	CF4.50"/2.75"	85.90	75.20
CF-4RC-450x338	CF4.50"/3.38"	85.90	88.40
CF-4RC-462x338	CF4.62"/3.38"	89.70	94.70
CF-4RC-462x450	CF4.62"/4.50"	89.70	92.20
CF-4RC-600x275	CF6.00"/2.75"	109.70	94.20
CF-4RC-600x338	CF6.00"/3.38"	109.70	107.40
CF-4RC-600x450	CF6.00"/4.50"	109.70	104.90
CF-4RC-600x462	CF6.00"/4.62"	109.70	104.90

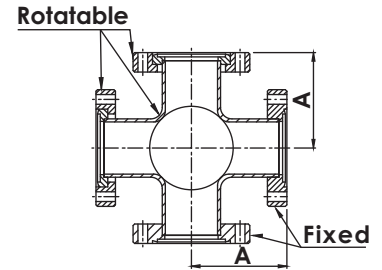
NOTE: 316LNSS (316L TUBE+316LN FLANGE) MATERIAL AVAILABLE ON REQUEST.
NOTE: POLISHED AND ELECTRO- POLISHED TUBE FINISHES AVAILABLE ON REQUEST.

CF Flanges & Fittings

CF 五通 CF 5-WAY CROSSES

材质：304/L Material: 304/L

管表面处理：喷砂 Tube surface: sandblasting



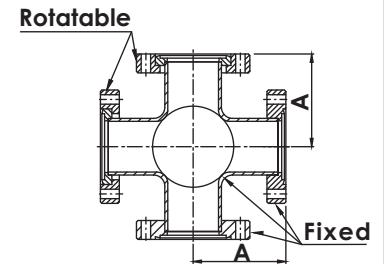
Catalogue PN	Flange Size	A
CF-5C-133	CF1.33"	38.10
CF-5C-212	CF2.12"	52.00
CF-5C-275	CF2.75"	62.50
CF-5C-338	CF3.38"	81.80
CF-5C-450	CF4.50"	85.90
CF-5C-462	CF4.62"	92.20
CF-5C-600	CF6.00"	134.90

CF

CF 管型六通 CF 6-WAY CROSSES

材质：304/L Material: 304/L

管表面处理：喷砂 Tube surface: sandblasting



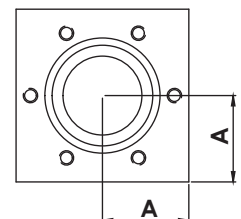
Catalogue PN	Flange Size	A
CF-6C-133	CF1.33"	38.10
CF-6C-212	CF2.12"	52.07
CF-6C-275	CF2.75"	62.48
CF-6C-338	CF3.38"	81.79
CF-6C-450	CF4.50"	85.85
CF-6C-462	CF4.62"	92.20
CF-6C-600	CF6.00"	134.90

NOTE: 316LNSS (316L TUBE+316LN FLANGE) MATERIAL AVAILABLE ON REQUEST.
NOTE: POLISHED AND ELECTRO- POLISHED TUBE FINISHES AVAILABLE ON REQUEST.

CF 一体成型六通 CF 6-WAY CUBES

材质：304/L Material: 304/L

管表面处理：喷砂 Tube surface: sandblasting



Catalogue PN	Flange Size	A	Type
CF-6CU-133T	CF1.33"	17.00	INCH TAPPED
CF-6CU-133TM	CF1.33"	17.00	METRIC TAPPED
CF-6CU-275T	CF2.75"	35.05	INCH TAPPED
CF-6CU-275TM	CF2.75"	35.05	METRIC TAPPED
CF-6CU-338T	CF3.38"	42.50	INCH TAPPED
CF-6CU-338TM	CF3.38"	42.50	METRIC TAPPED
CF-6CU-450T	CF4.50"	56.75	INCH TAPPED
CF-6CU-450TM	CF4.50"	56.75	METRIC TAPPED
CF-6CU-600T	CF6.00"	75.80	INCH TAPPED
CF-6CU-600TM	CF6.00"	75.80	METRIC TAPPED

NOTE: 316LNSS MATERIAL AVAILABLE ON REQUEST.



**KF FLANGES &
DN FLANGES
FITTINGS**

KF FLANGE & TUBE

Clamp flanges are designed and manufactured in accordance with International Organization for Standardization specifications, and are common with other current international brand specifications (KF-ISO specifications)

Standard material specification Stainless steel 304/L, 316L and magnesium aluminum alloy (AL6061)

The quick and easy design of the KF flange allows the user to quickly and repeatedly assemble and disassemble parts.

The corresponding range of flange diameter is from 1/2"~2".

The KF flange adopts the corresponding aluminum alloy (stainless steel) clamps, so that users can easily assemble and disassemble without tools.

The 15-degree inclined surface design on the flange side corresponds to the clamp and provides a consistent locking force, so that the center ring O-ring gasket is firmly fixed between the flanges, thereby achieving a stable sealing function.

Vacuum pressures can range as low as 1×10^{-8} Torr and bake temperatures up to 200° C. The product range also provides corresponding adapters for conversion of different specifications, please refer to the adapter product series.

Cleaning and Packaging

All welding points of the product are 100% leak tested. The product is cleaned by ultrasonic cleaning equipment, and the water quality is deionized water that meets the requirements of semiconductors. Packaging environment The combination and packaging of the overall product are done in a high clean environment to ensure the cleanliness of the product.

Specification:

APPLICATION:VACUUM

MATERIAL:304/L;316LN,AL 6061

Flange size range:KF10-KF50

Standard pipe diameter size range:1/2"-2"

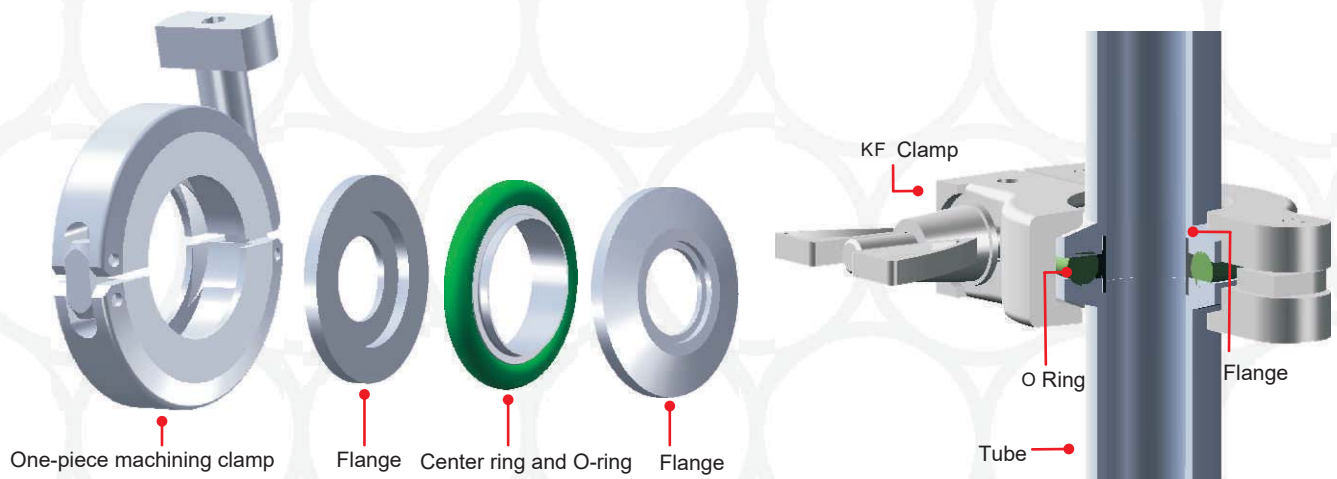
Pipe surface:sandblasting

Pressure range:

760 Torr ~ 1×10^{-8} Torr

Gasket material: OFHC oxygen-free copper or silver plated

Temperature range: Less than 200 degrees Celsius (less than 150 degrees Celsius for long-term operation)



**KF
DN**

KF法兰与管件

卡箍式法兰依照国际标准化组织规格设计制造，与现行国际其他厂牌规格通用 (KF-ISO规格)。

标准材质规格不锈钢304/L，316L与镁铝合金(AL6061)。

KF法兰快速与简易的设计，可方便使用者迅速并可重复的组合与拆解零件。

法兰对应范围管径由1/2"~2"。

KF法兰采用对应的铝合金(不锈钢)卡箍，让使用者可不需要工具即可方便做组装与拆卸。

法兰侧面的15度角斜面设计，与卡箍对应，并提供一致性的锁附力道，让中心圈O型环垫片稳固的固定于法兰之间，进而达到稳定的密封功能。

真空压力的范围可低至 1×10^{-8} Torr并可烘烤温度最高为摄氏200度。

产品范围也针对不同规格的转换，提供对应的转接头，请参考转接头产品系列。

标准规格

应用：高真空

材质：304/L，316L，镁铝合金AL6061

法兰尺寸范围：KF10~KF50

标准管件径尺寸范围：1/2"~2"

管件表面处理：喷砂

压力范围：760 Torr ~ 1×10^{-8} Torr

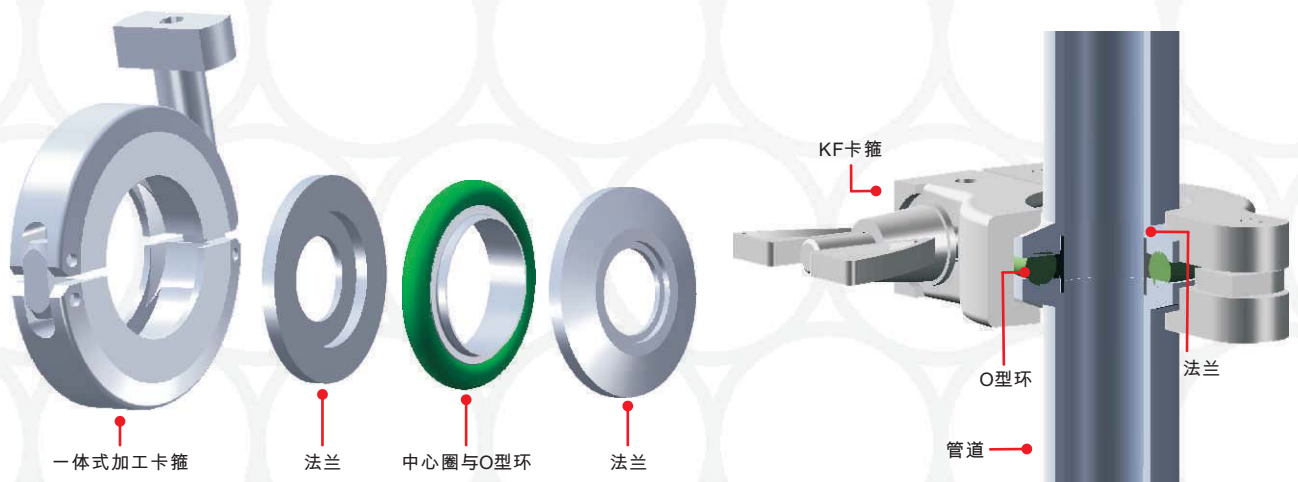
密封垫片材质：FKM，Buna-N或硅胶

温度范围：小于摄氏200度(长期操作小于摄氏150度)

清洁与包装

产品所有的焊接点100%的测漏检验，产品清洗经过超音波清洗设备清洗，水质使用合乎半导体要求去离子水。

包装环境于高洁净环境做整体产品的组合与包装，确保产品的洁净度。



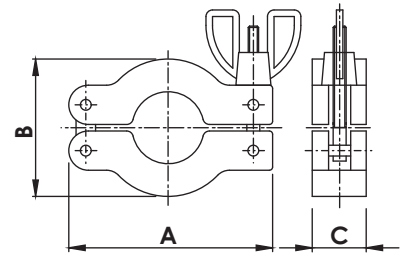
KF
DN

KF Flanges & Fittings

KF 卡箍 型式1(两点式) KF WING-NUT CLAMPS TYPE 1

本体为铸造成型 The body is cast

(卡箍强度：次强) (clamp strength: second strongest)

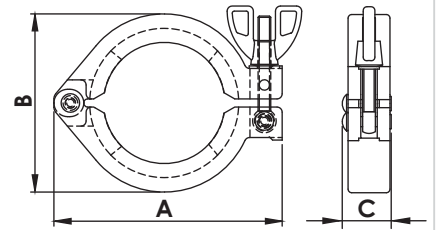


Catalogue PN	Size	A	B	C
KF-WC1-1016	KF10/16	62.30	41.00	16.50
KF-WC1-25	KF25	72.40	54.00	16.50
KF-WC1-40	KF40	89.70	69.00	16.50
KF-WC1-50	KF50	114.00	90.00	21.50

KF 卡箍 型式2(单点式) KF WING-NUT CLAMPS TYPE 2

本体为铸造成型 The body is cast

(卡箍强度：尚可) (clamp strength: common)

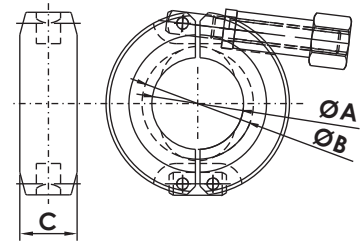


Catalogue PN	Size	A	B	C
KF-WC2-1016	KF10/16	62.70	41.40	19.30
KF-WC2-25	KF25	72.00	53.10	19.30
KF-WC2-40	KF40	90.00	70.20	19.30
KF-WC2-50	KF50	113.40	93.40	22.80

KF CNC SS304 CLAMPS

*CNC MACHINED CLAMP MADE BY STAINLESS 304 FOR EXTRA RIGID STRENGTH AND DURABLE

*INTEGRAL LATCHING APPARATUS CAN PREVENT UNINTENTIONAL OPENING

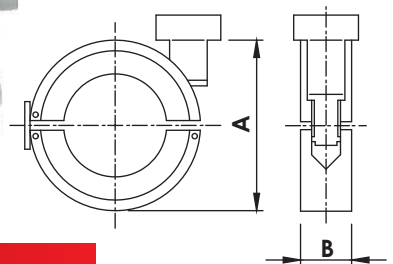


Catalogue PN	Size	ØA	ØB	C
KF-CC-1016-04	KF10/16	25.40	30.80	15.90
KF-CC-25-04	KF25	34.12	40.94	15.90
KF-CC-40-04	KF40	49.40	55.70	15.90
KF-CC-50-04	KF50	69.00	75.60	15.90

一体式加工卡箍 KF CNC MACHINED CLAMPS

本体为圆棒加工成型 The body is processed and formed from a round bar

(卡箍强度：最强) (clamp strength: strongest)

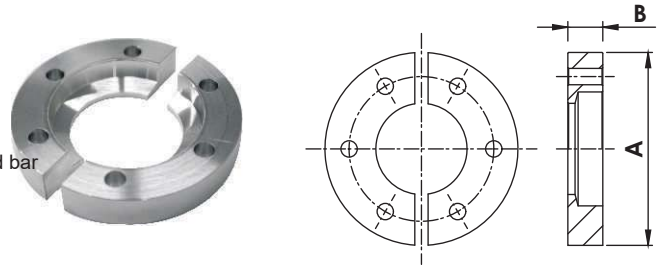


Catalogue PN	Size	A	B
KF-CC-1016-AL	KF10/16	50.80	15.90
KF-CC-25-AL	KF25	63.60	15.90
KF-CC-40-AL	KF40	74.70	15.90
KF-CC-50-AL	KF50	101.60	15.90

KF Flanges & Fittings

KF 环颈型卡箍 KF BULKHEAD CLAMP

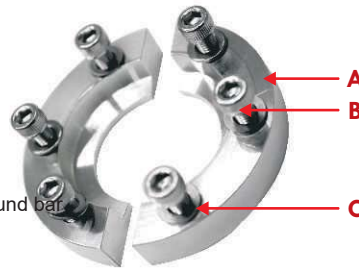
本体为圆棒加工成型 The body is processed and formed from a round bar
(卡箍强度：最强) (clamp strength: strongest)
优势：可接受最低直部，体积最小化
Advantages: lowest straight part acceptable, minimal bulk



Catalogue PN	Size	A	B	Bolt Hole Size	No of Bolt Holes
KF-BC-16	KF16	50.80	9.20	5.30	6
KF-BC-25	KF25	60.30	9.90	5.30	6
KF-BC-40	KF40	74.60	9.30	5.30	6
KF-BC-50	KF50	95.20	10.30	5.30	8

KF 环颈型卡箍螺丝组 KF BULKHEAD CLAMP SETS

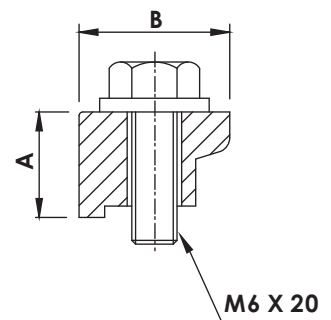
本体为圆棒加工成型 The body is processed and formed from a round bar
(卡箍强度：最强) (clamp strength: strongest)
优势：可接受最低直部，体积最小化
Advantages: lowest straight part acceptable, minimal bulk



Catalogue PN	Size	A	B	C
KF-BCS-16	NW16	KF-BC-16	10-32UNF-15.9L(6PCS)	10-32UNF(6PCS)
KF-BCS-25	NW25	KF-BC-25	10-32UNF-15.9L(6PCS)	10-32UNF(6PCS)
KF-BCS-40	NW40	KF-BC-40	10-32UNF-15.9L(6PCS)	10-32UNF(6PCS)
KF-BCS-50	NW50	KF-BC-50	10-32UNF-15.9L(8PCS)	10-32UNF(8PCS)

KF 单向夹子螺丝 KF WALL CLAMPS with BOLT

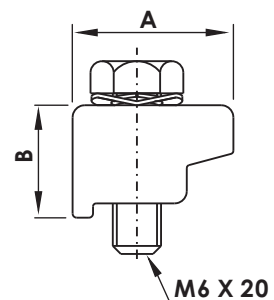
本体为铸造，螺丝为不锈钢 The body is cast, screw is stainless steel
(卡箍强度：次强) (clamp strength: second strongest)
优势：可接受最低直部，体积最小化
Advantages: lowest straight part acceptable, minimal bulk



Catalogue PN	Size	A	B
KF-WC1-1650	KF16~KF50	15.00	20.00

KF 单向夹子头 KF SINGLE CLAW CLAMP KIT

材质：304/L Material: 304/L
4PCS IN 1 PACK



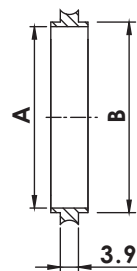
Catalogue PN	Size	A	B
KF-SC-1650	KF16~KF50	20.00	14.00

**KF
DN**

KF Flanges & Fittings

KF 中心圈 KF CENTERING RINGS

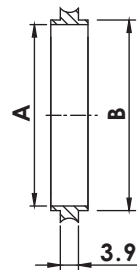
不锈钢304/L Material: 304/L



Catalogue PN	Size	A	B
KF-CRN-10	KF10	10.00	12.00
KF-CRN-16	KF16	16.00	17.00
KF-CRN-25	KF25	25.00	26.00
KF-CRN-40	KF40	40.00	41.00
KF-CRN-50	KF50	50.00	52.00

NOTE: 316/L MATERIAL AVAILABLE ON REQUEST.

KF 中心圈，镁铝合金 KF CENTERING RINGS, ALUMINUM

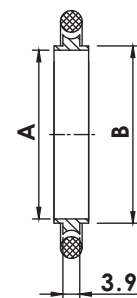


Catalogue PN	Size	A	B
KF-CRN-10-AL	KF10	10.00	12.00
KF-CRN-16-AL	KF16	16.00	17.00
KF-CRN-25-AL	KF25	25.00	26.00
KF-CRN-40-AL	KF40	40.00	41.00
KF-CRN-50-AL	KF50	50.00	52.00

KF 中心圈O型环 KF CENTERING RINGS with O-RINGS

不锈钢304/L Material: 304/L

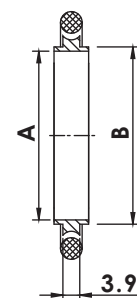
O型环 : FKM · Buna-N或硅胶 O-rings: FKM, Buna-N or silicone



Catalogue PN	Size	A	B
KF-CRO-10	KF10	10.00	12.00
KF-CRO-16	KF16	16.00	17.00
KF-CRO-25	KF25	25.00	26.00
KF-CRO-40	KF40	40.00	41.00
KF-CRO-50	KF50	50.00	52.00

KF 中心圈O型环，镁铝合金 KF CENTERING RINGS with O-RINGS, ALUMINUM

O型环 : FKM · Buna-N或硅胶 O-rings: FKM, Buna-N or silicone



Catalogue PN	Size	A	B
KF-CRO-10-AL	KF10	10.00	12.00
KF-CRO-16-AL	KF16	16.00	17.00
KF-CRO-25-AL	KF25	25.00	26.00
KF-CRO-40-AL	KF40	40.00	41.00
KF-CRO-50-AL	KF50	50.00	52.00

NOTE: FFKM O-RING MATERIAL AVAILABLE ON REQUEST.

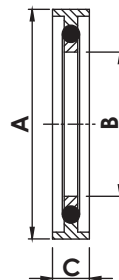
KF Flanges & Fittings

KF 中心圈O型环耐压环

KF CENTERING RINGS with O-RINGS & SPACERS

不锈钢304/L与镁铝合金AL6061 Material: 304/L & Magnesium aluminum alloy AL6061

O型环 : FKM O-rings: FKM



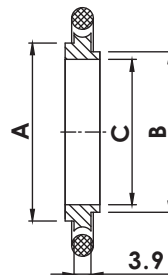
Catalogue PN	Size	A	B	C
KF-CROS-16	KF16	32.50	16.00	7.00
KF-CROS-25	KF25	42.50	25.00	7.00
KF-CROS-40	KF40	57.50	40.00	7.00
KF-CROS-50	KF50	77.50	50.00	7.00

KF 变径中心圈O型环

KF ADAPTIVE CENTERING RINGS with O-RINGS

不锈钢304/L Material: 304/L

O型环 : FKM O-rings: FKM



Catalogue PN	Size	A	B	C
KF-CROA-1016	KF10/16	17.00	12.00	10.00
KF-CROA-2025	KF20/25	26.00	22.00	20.00
KF-CROA-3240	KF32/40	41.00	34.00	32.00

KF 过滤网中心圈O型环

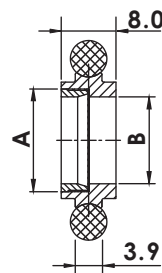
KF SCREENED CENTERING RINGS with O-RINGS

不锈钢304/L Material: 304/L

不锈钢网密度70目(一平方寸有70孔洞)

O型环 : FKM Stainless steel mesh density 70 mesh (70 holes per square inch)

O-rings: FKM



Catalogue PN	Size	A	B
KF-CROSC-16	KF16	15.00	12.70
KF-CROSC-25	KF25	23.80	21.80
KF-CROSC-40	KF40	38.80	36.80
KF-CROSC-50	KF50	50.00	47.75

NOTE: FFKM O-RING MATERIAL AVAILABLE ON REQUEST.

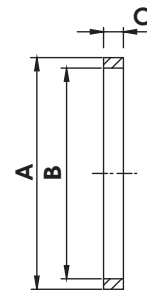
**KF
DN**

KF Flanges & Fittings

KF 耐压环

KF OVER PRESSURE RINGS

不锈钢304/L Material: 304/L



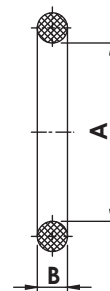
Catalogue PN	Size	A	B	C
KF-OR-10	KF 10	31.80	27.70	3.60
KF-OR-16	KF 16	31.80	29.90	3.60
KF-OR-25	KF 25	41.90	39.10	3.60
KF-OR-40	KF 40	57.20	54.50	3.60
KF-OR-50	KF 50	69.90	67.60	3.60

**KF
DN**

KF O型环

KF REPLACEMENT O-RINGS

FKM



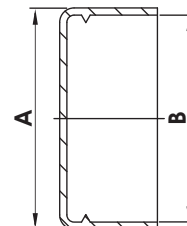
Catalogue PN	Size	A	B
KF-RO-10	KF 10	15.24	5.33
KF-RO-16	KF 16	18.42	5.33
KF-RO-25	KF 25	27.94	5.33
KF-RO-40	KF 40	40.64	5.33
KF-RO-50	KF 50	53.34	5.33

NOTE: FFKM O-RING MATERIAL AVAILABLE ON REQUEST.

KF 法兰保护盖

KF PLASTIC CAP

材质: P E Material: PE



Catalogue PN	Size	A	B
KF-PC-1016	KF10/ KF16	32.00	30.00
KF-PC-25	KF25	42.00	40.00
KF-PC-40	KF40	57.00	55.00
KF-PC-50	KF50	77.00	75.00

KF Flanges & Fittings

KF 盲法兰

KF BLANK FLANGES

材质：不锈钢304/L Material: 304/L

Catalogue PN	Size	A	B
KF-BL-10	KF10	30.00	5.10
KF-BL-16	KF16	30.00	5.10
KF-BL-25	KF25	40.00	5.10
KF-BL-40	KF40	55.00	5.10
KF-BL-50	KF50	75.00	5.10

NOTE: 316/L MATERIAL AVAILABLE ON REQUEST.

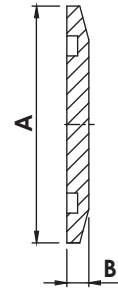


KF 盲法兰

KF BLANK FLANGES, ALUMINUM

材质：镁铝合金AL6061 Material: Magnesium aluminum alloy AL6061

Catalogue PN	Size	A	B
KF-BL-10-AL	KF10	30.00	5.10
KF-BL-16-AL	KF16	30.00	5.10
KF-BL-25-AL	KF25	40.00	5.10
KF-BL-40-AL	KF40	55.00	5.10
KF-BL-50-AL	KF50	75.00	5.10



KF 通径法兰

KF BORED FLANGES

材质：不锈钢304/L Material: 304/L



Catalogue PN	Size	Diagram	A	B	C	D	E
KF-BF-10x038	KF 10-3/8"	A	30.00	12.20	-	9.65	5.10
KF-BF-16x025	KF16-1/4"	A	30.00	17.20	-	6.50	5.10
KF-BF-16x038	KF16-3/8"	A	30.00	17.20	-	9.65	5.10
KF-BF-16x050	KF16-1/2"	B	30.00	17.20	10.16	12.95	5.10
KF-BF-16x075	KF16-3/4"	B	30.00	17.20	16.51	19.30	4.40
KF-BF-25x025	KF25-1/4"	A	40.00	26.20	-	6.50	5.10
KF-BF-25x038	KF25-3/8"	A	40.00	26.20	-	9.65	5.10
KF-BF-25x050	KF25-1/2"	B	40.00	26.20	10.16	12.95	5.10
KF-BF-25x075	KF25-3/4"	B	40.00	26.20	16.51	19.30	5.10
KF-BF-25x100	KF25-1.0"	B	40.00	26.20	22.88	25.65	4.90
KF-BF-40x025	KF40-1/4"	A	55.00	41.20	-	6.50	5.10
KF-BF-40x038	KF40-3/8"	A	55.00	41.20	-	9.65	5.10
KF-BF-40x050	KF40-1/2"	B	55.00	41.20	10.16	12.95	5.10
KF-BF-40x075	KF40-3/4"	B	55.00	41.20	16.51	19.30	5.10
KF-BF-40x100	KF40-1.0"	B	55.00	41.20	22.88	25.65	5.10
KF-BF-40x150	KF40-1.5"	B	55.00	41.20	35.58	38.35	5.10
KF-BF-50x025	KF50-1/4"	A	75.00	52.20	-	6.50	5.10
KF-BF-50x038	KF50-3/8"	A	75.00	52.20	-	9.65	5.10
KF-BF-50x050	KF50-1/2"	B	75.00	52.20	10.16	12.95	5.10
KF-BF-50x075	KF50-3/4"	B	75.00	52.20	16.51	19.30	5.10
KF-BF-50x100	KF50-1.0"	B	75.00	52.20	22.88	25.65	5.10
KF-BF-50x150	KF50-1.5"	B	75.00	52.20	35.58	38.35	5.10
KF-BF-50x200	KF50-2.0"	B	75.00	52.20	48.26	51.05	5.10

NOTE: 316/L or ALUMINUM MATERIAL AVAILABLE ON REQUEST.

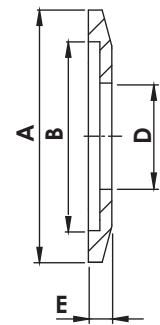


Diagram A

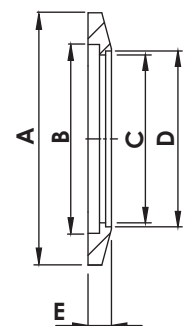


Diagram B

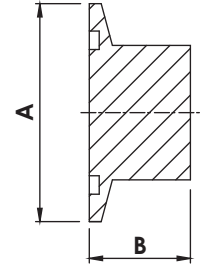
**KF
DN**

KF Flanges & Fittings

KF 盲孔短颈法兰

KF UNBORED STUB FLANGES

材质：不锈钢304/L Material: 304/L

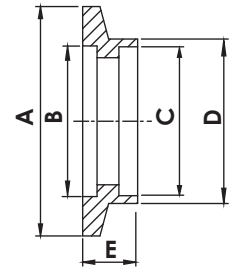


Catalogue PN	Size	A	B
KF-UF-10	KF 10-0.56"L	30.00	14.20
KF-UF-16	KF 16-0.56"L	30.00	14.20
KF-UF-16-1	KF 16-0.75"L	30.00	19.10
KF-UF-25	KF 25-0.47"L	40.00	11.90
KF-UF-25-1	KF 25-0.75"L	40.00	19.10
KF-UF-40	KF 40-0.50"L	55.00	12.70
KF-UF-40-1	KF 40-1.00"L	55.00	25.40
KF-UF-50	KF 50-0.62"L	75.00	15.70
KF-UF-50-1	KF 50-1.00"L	75.00	25.40

KF 短颈承插焊式法兰

KF SOCKET WELD FLANGES, SHORT

材质：不锈钢304/L Material: 304/L

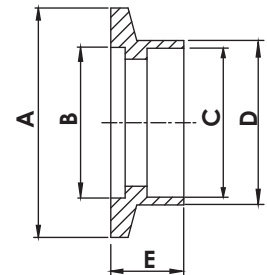


Catalogue PN	Size	A	B	C	D	E
KF-SWS-10	KF10	30.00	12.20	12.90	16.00	6.35
KF-SWS-16	KF16	30.00	17.20	19.30	22.40	6.35
KF-SWS-25	KF25	40.00	26.20	25.70	28.80	6.35
KF-SWS-40	KF40	55.00	41.20	38.40	41.50	6.35
KF-SWS-50	KF50	75.00	52.20	51.10	54.20	6.35

KF 长颈承插焊式法兰

KF SOCKET WELD FLANGES, LONG

材质：不锈钢304/L Material: 304/L

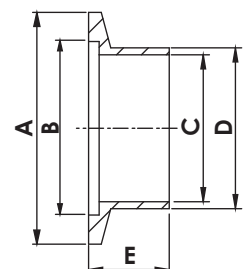


Catalogue PN	Size	A	B	C	D	E
KF-SWL-10	KF10	30.00	12.20	13.00	15.50	12.70
KF-SWL-16	KF16	30.00	17.20	19.30	22.20	12.70
KF-SWL-25	KF25	40.00	26.20	25.90	28.60	12.70
KF-SWL-40	KF40	55.00	41.20	38.60	44.50	12.70
KF-SWL-50	KF50	75.00	52.20	51.30	57.20	12.70

KF 短颈对接焊式法兰

KF BUTT WELD STUB FLANGES, SHORT

材质：不锈钢304/L Material: 304/L



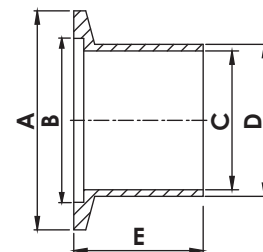
Catalogue PN	Size	A	B	C	D	E
KF-BWS-10	KF10	30.00	12.20	9.40	12.70	12.70
KF-BWS-16	KF16	30.00	12.70	15.70	19.10	12.70
KF-BWS-25	KF25	40.00	26.20	22.10	25.40	12.70
KF-BWS-40	KF40	55.00	41.20	34.80	38.10	19.10
KF-BWS-50	KF50	75.00	52.20	47.50	50.80	19.10

NOTE: 316/L or ALUMINUM MATERIAL AVAILABLE ON REQUEST.

KF Flanges & Fittings

KF 长颈对接焊式法兰 KF BUTT WELD STUB FLANGES, LONG

材质：不锈钢304/L Material: 304/L



Catalogue PN	Size	A	B	C	D	E
KF-BWL-10	KF10	30.00	12.20	9.40	12.70	40.00
KF-BWL-1016	K10/16	30.00	17.20	9.40	12.70	40.00
KF-BWL-16	KF16	30.00	17.20	15.75	19.05	40.00
KF-BWL-25	KF25	40.00	26.20	22.10	25.40	40.00
KF-BWL-40	KF40	55.00	41.20	34.90	38.10	40.00
KF-BWL-50	KF50	75.00	52.20	47.60	50.80	40.00

KF 半短管 KF HALF NIPPLES

材质：不锈钢304/L Material: 304/L

Catalogue PN	Size	Diagram	A	B	C	D	E
KF-HN-10	KF 10-1.25"	A	30.00	12.20	9.40	12.70	31.75
KF-HN-16	KF 16-1.15"	A	30.00	17.20	15.80	19.10	29.21
KF-HN-16-1	KF 16-1.50"	A	30.00	17.20	15.80	19.10	38.10
KF-HN-25	KF 25-2.03"	B	40.00	26.20	22.10	25.40	51.56
KF-HN-25-1	KF 25-2.04"	A	40.00	26.20	22.10	25.40	51.80
KF-HN-40	KF40-2.40"	B	55.00	41.20	34.80	38.10	60.96
KF-HN-40-1	KF40-2.46"	B	55.00	41.20	34.80	38.10	62.50
KF-HN-50	KF50-3.15"	B	75.00	52.20	47.50	50.80	80.01
KF-HN-50-1	KF50-3.21"	B	75.00	52.20	47.50	50.80	81.50

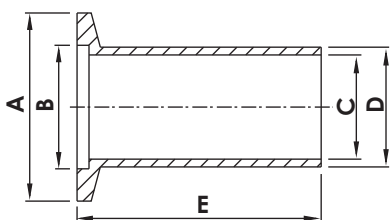


Diagram A
Machined

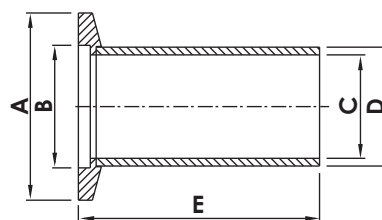


Diagram B
Welded

NOTE: 316/L or ALUMINUM MATERIAL AVAILABLE ON REQUEST.

**KF
DN**

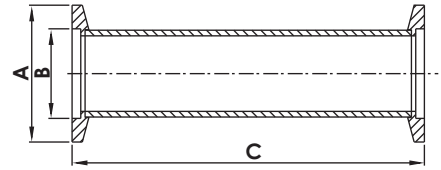
KF Flanges & Fittings

KF 短管

KF FULL NIPPLES

材质：不锈钢304/L Material: 304/L

管表面处理：喷砂 Tube surface: sandblasting



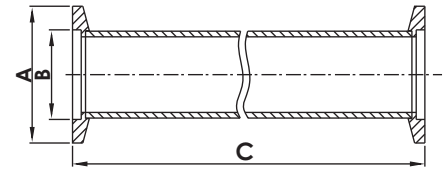
Catalogue PN	Size	A	B	C
KF-FN-10	KF10-2.50"	30.00	12.20	63.50
KF-FN-16	KF16-2.30"	30.00	17.20	58.40
KF-FN-25	KF25-4.00"	40.00	26.20	103.10
KF-FN-40	KF40-4.80"	55.00	41.20	121.90
KF-FN-50	KF50-6.30"	75.00	52.20	160.00

KF 长式短管

KF FULL NIPPLES, LONG

材质：不锈钢304/L Material: 304/L

管表面处理：喷砂 Tube surface: sandblasting



Catalogue PN	Size	A	B	C
KF-FNL-16	KF16-12.60"	30.00	17.20	320.00
KF-FNL-25	KF25-12.60"	40.00	26.20	320.00
KF-FNL-40	KF40-12.60"	55.00	41.20	320.00
KF-FNL-50	KF50-12.60"	75.00	52.20	320.00

NOTE: 316/L MATERIAL AVAILABLE ON REQUEST.

NOTE: POLISHED AND ELECTRO- POLISHED TUBE FINISHES AVAILABLE ON REQUEST.

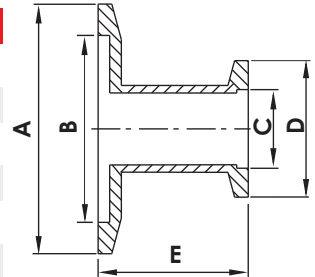
KF Flanges & Fittings

KF 直管大小头 KF STRAIGHT REDUCERS

材质：不锈钢304/L Material: 304/L



Catalogue PN	Size	A	B	C	D	E
KF-SRN-25x16	KF25 X KF16	40.00	26.20	17.20	30.00	43.20
KF-SRN-40x16	KF40 X KF16	55.00	41.20	17.20	30.00	43.20
KF-SRN-40x25	KF40 X KF25	55.00	41.20	26.20	40.00	43.20
KF-SRN-50x16	KF50 X KF16	75.00	52.20	17.20	30.00	43.20
KF-SRN-50x25	KF50X KF25	75.00	52.20	26.20	40.00	43.20
KF-SRN-50x40	KF50 X KF40	75.00	52.20	41.20	55.00	43.20

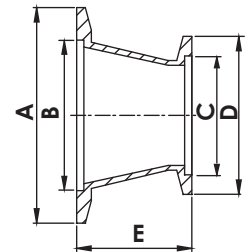


KF 同心缩管大小头 KF CONICAL REDUCERS

材质：不锈钢304/L Material: 304/L



Catalogue PN	Size	A	B	C	D	E
KF-CRN-25x16	KF25xKF16	40.00	26.20	17.20	30.00	39.90
KF-CRN-40x16	KF40xKF16	55.00	41.20	17.20	30.00	39.90
KF-CRN-40x25	KF40xKF25	55.00	41.20	26.20	40.00	39.90
KF-CRN-50x16	KF50xKF16	75.00	52.20	17.20	30.00	39.90
KF-CRN-50x25	KF50xKF25	75.00	52.20	26.20	40.00	39.90
KF-CRN-50x40	KF50xKF40	75.00	52.20	41.20	55.00	39.90



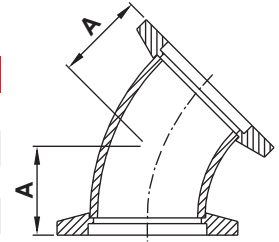
**KF
DN**

NOTE: 316/L or ALUMINUM MATERIAL AVAILABLE ON REQUEST.
NOTE: POLISHED AND ELECTRO- POLISHED TUBE FINISHES AVAILABLE ON REQUEST.

KF Flanges & Fittings

KF 45° 弯头 KF 45° ELBOWS

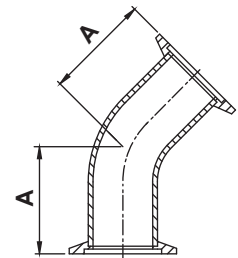
材质：不锈钢304/L Material: 304/L
管表面处理：喷砂 Tube surface: sandblasting



Catalogue PN	Size	A
KF-45EL-16	KF16	15.65
KF-45EL-25	KF25	19.58
KF-45EL-40	KF40	27.47
KF-45EL-50	KF50	35.36

KF 45° 直部弯头 KF 45° ELBOWS with TANGENTS

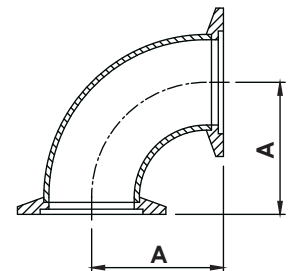
材质：不锈钢304/L Material: 304/L
管表面处理：喷砂 Tube surface: sandblasting



Catalogue PN	Size	A
KF-45ELT-16	KF16	23.10
KF-45ELT-25-S	KF25-S	28.45
KF-45ELT-25	KF25	33.88
KF-45ELT-40-S	KF40-S	42.67
KF-45ELT-40	KF40	45.10
KF-45ELT-50-S	KF50-S	50.55
KF-45ELT-50	KF50	62.50

KF 90° 弯头 KF 90° ELBOWS

材质：不锈钢304/L Material: 304/L
管表面处理：喷砂 Tube surface: sandblasting



Catalogue PN	Size	A
KF-90EL-10	KF10	31.80
KF-90EL-16	KF16	29.20
KF-90EL-25	KF25	41.90
KF-90EL-40	KF40	61.00
KF-90EL-50	KF50	80.00

NOTE: 316/L MATERIAL AVAILABLE ON REQUEST.
NOTE: POLISHED AND ELECTRO- POLISHED TUBE FINISHES AVAILABLE ON REQUEST.

**K F
D N**

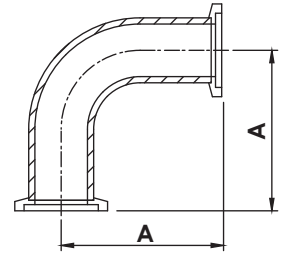
KF Flanges & Fittings

KF 90° 直部弯头

KF 90° ELBOWS with TANGENTS

材质：不锈钢304/L Material: 304/L

管表面处理：喷砂 Tube surface: sandblasting



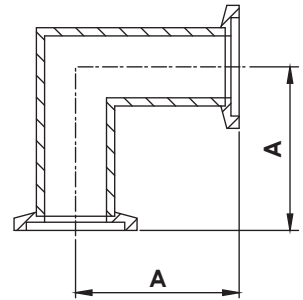
Catalogue PN	Size	A
KF-90ELT-16	KF16	68.58
KF-90ELT-25	KF25	92.46
KF-90ELT-40	KF40	130.05
KF-90ELT-50	KF50	139.95

KF 90° 直角弯头

KF 90° MITERED ELBOWS

材质：不锈钢304/L Material: 304/L

管表面处理：喷砂 Tube surface: sandblasting



Catalogue PN	Size	A
KF-MEL-16	KF16	29.21
KF-MEL-16-H	KF16-H	40.00
KF-MEL-25	KF25	50.00
KF-MEL-25-H	KF25-H	51.56
KF-MEL-40	KF40	60.96
KF-MEL-40-H	KF40-H	65.00
KF-MEL-50	KF50	69.84
KF-MEL-50-H	KF50-H	80.01

**K F
DN**

NOTE: 316/L MATERIAL AVAILABLE ON REQUEST.

NOTE: POLISHED AND ELECTRO- POLISHED TUBE FINISHES AVAILABLE ON REQUEST.

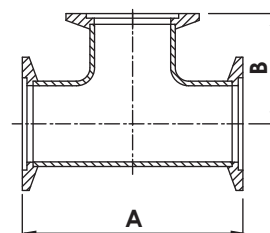
KF Flanges & Fittings

KF 同径三通

KF EQUAL TEES

材质：不锈钢304/L Material: 304/L

管表面处理：喷砂 Tube surface: sandblasting



Catalogue PN	Size	A	B
KF-ET-10	KF10	63.50	31.75
KF-ET-16	KF16	58.40	29.20
KF-ET-16-H	KF16-H	80.00	40.00
KF-ET-25	KF25	100.00	50.00
KF-ET-25-H	KF25-H	102.80	51.40
KF-ET-40	KF40	122.00	61.00
KF-ET-40-H	KF40-H	130.00	65.00
KF-ET-50	KF50	140.00	70.00
KF-ET-50-H	KF50-H	160.00	80.00

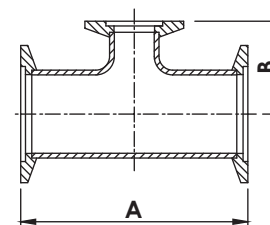
**KF
DN**

KF 异径三通

KF REDUCING TEES

材质：不锈钢304/L Material: 304/L

管表面处理：喷砂 Tube surface: sandblasting



Catalogue PN	Size	A	B
KF-RT-25x16	KF25 x KF16	100.00	27.80
KF-RT-25x16-1	KF25 x KF16	100.00	43.20
KF-RT-25x16-2	KF25 x KF16	103.10	32.25
KF-RT-40x16	KF40 x KF16	121.90	38.85
KF-RT-40x16-1	KF40 x KF16	130.00	34.00
KF-RT-40x16-2	KF40 x KF16	130.00	49.50
KF-RT-40x25	KF40 x KF25	121.90	57.91
KF-RT-40x25-1	KF40 x KF25	130.00	56.40
KF-RT-50x16	KF50 x KF16	140.00	40.10
KF-RT-50x16-1	KF50 x KF16	140.00	55.90
KF-RT-50x16-2	KF50 x KF16	160.00	45.20
KF-RT-50x25	KF50 x KF25	140.00	62.70
KF-RT-50x40	KF50 x KF40	140.00	71.40
KF-RT-50x40-1	KF50 x KF40	160.00	67.31

NOTE: 316/L MATERIAL AVAILABLE ON REQUEST.

NOTE: POLISHED AND ELECTRO- POLISHED TUBE FINISHES AVAILABLE ON REQUEST.

KF Flanges & Fittings

KF 同径四通

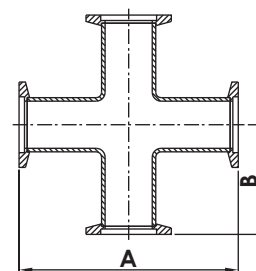
KF 4-WAY CROSSES

材质：不锈钢304/L Material: 304/L

管表面处理：喷砂 Tube surface: sandblasting



Catalogue PN	Size	A	B
KF-4C-10	KF10	63.50	31.75
KF-4C-16	KF16	58.40	29.20
KF-4C-16-H	KF16-H	80.00	40.00
KF-4C-25	KF25	100.00	50.00
KF-4C-25-H	KF25-H	102.80	51.40
KF-4C-40	KF40	122.00	61.00
KF-4C-40-H	KF40-H	130.00	65.00
KF-4C-50	KF50	140.00	70.00
KF-4C-50-H	KF50-H	160.00	80.00



KF 异径四通

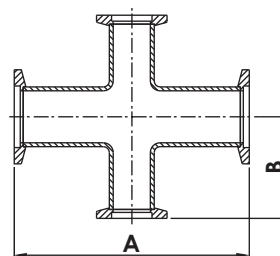
KF REDUCING 4-WAY CROSSES

材质：不锈钢304/L Material: 304/L

管表面处理：喷砂 Tube surface: sandblasting



Catalogue PN	Size	A	B
KF-4RC-25x16	KF25 x KF16	100.00	43.20
KF-4RC-25x16-H	KF25 x KF16-H	103.12	32.26
KF-4RC-40x16	KF40 x KF16	121.92	38.86
KF-4RC-40x16-H	KF40 x KF16-H	130.00	49.50
KF-4RC-40x25	KF40 x KF25	121.92	57.91
KF-4RC-40x25-H	KF40 x KF25-H	130.00	56.40
KF-4RC-50x16	KF50 x KF16	140.00	55.90
KF-4RC-50x16-H	KF50 x KF16-H	160.02	45.21
KF-4RC-50x25-H	KF50 x KF25-H	140.00	62.70
KF-4RC-50x40	KF50 x KF40	140.00	71.40
KF-4RC-50x40-H	KF50 x KF40-H	160.02	67.31



**KF
DN**

NOTE: 316/L MATERIAL AVAILABLE ON REQUEST.

NOTE: POLISHED AND ELECTRO- POLISHED TUBE FINISHES AVAILABLE ON REQUEST.

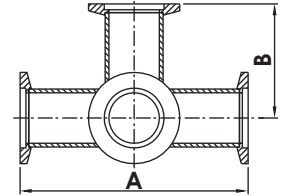
KF Flanges & Fittings

KF 五通

KF 5-WAY CROSSES

材质：不锈钢304/L Material: 304/L

管表面处理：喷砂 Tube surface: sandblasting



Catalogue PN	Size	A	B
KF-5C-16	KF16	80.00	40.00
KF-5C-25	KF25	100.00	50.00
KF-5C-40	KF40	130.00	65.00
KF-5C-50	KF50	140.00	70.00

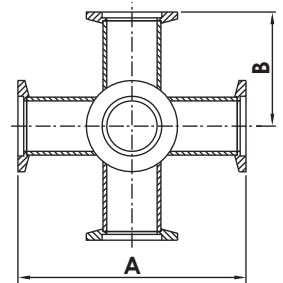
**K F
D N**

KF 六通

KF 6-WAY CROSSES

材质：不锈钢304/L Material: 304/L

管表面处理：喷砂 Tube surface: sandblasting



Catalogue PN	Size	A	B
KF-6C-16	KF16	80.00	40.00
KF-6C-25	KF25	100.00	50.00
KF-6C-40	KF40	130.00	65.00
KF-6C-50	KF50	140.00	70.00

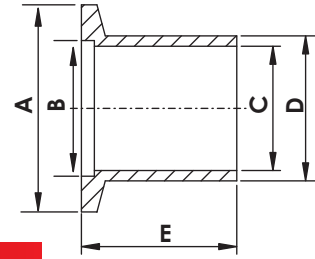
NOTE: 316/L MATERIAL AVAILABLE ON REQUEST.

NOTE: POLISHED AND ELECTRO- POLISHED TUBE FINISHES AVAILABLE ON REQUEST.

DN Flanges & Fittings

DN 长颈对接焊式法兰,长 26MM DN BUTT WELD STUBS, LENGTH 26MM

*MATERIAL: 304/L



Catalogue PN	Size	A	B	C	D	E
DN-BW26-10	DN10	30.00	12.20	10.00	14.00	26.00
DN-BW26-16	DN16	30.00	17.20	16.00	20.00	26.00
DN-BW26-20	DN20	40.00	22.20	21.00	25.00	26.00
DN-BW26-25	DN25	40.00	26.20	24.00	28.00	26.00
DN-BW26-32	DN32	55.00	34.20	34.00	38.00	26.00
DN-BW26-40	DN40	55.00	41.20	40.50	44.50	26.00
DN-BW26-50	DN50	75.00	52.20	50.60	57.00	26.00

DN 长颈对接焊式法兰,长 30MM DN BUTT WELD STUBS, LENGTH 30MM

*MATERIAL: 304/L

Catalogue PN	Size	A	B	C	D	E
DN-BW30-10	DN10	30.00	12.20	10.00	14.00	30.00
DN-BW30-16	DN16	30.00	17.20	16.00	20.00	30.00
DN-BW30-25	DN25	40.00	26.20	24.00	28.00	30.00
DN-BW30-40	DN40	55.00	41.20	40.50	44.50	30.00
DN-BW30-50	DN50	75.00	52.20	50.60	57.00	30.00

DN 长颈对接焊式法兰,长 55MM DN BUTT WELD STUBS, LENGTH 55MM

*MATERIAL: 304/L

Catalogue PN	Size	A	B	C	D	E
DN-BW55-10	DN10	30.00	12.20	10.00	14.00	55.00
DN-BW55-16	DN16	30.00	17.20	16.00	20.00	55.00
DN-BW55-25	DN25	40.00	26.20	24.00	28.00	55.00
DN-BW55-40	DN40	55.00	41.20	40.50	44.50	55.00
DN-BW55-50	DN50	75.00	52.20	50.60	57.00	55.00

DN 长颈对接焊式法兰,长 70MM DN BUTT WELD STUBS, LENGTH 70MM

*MATERIAL: 304/L

Catalogue PN	Size	A	B	C	D	E
DN-BW70-10	DN10	30.00	12.20	10.00	14.00	70.00
DN-BW70-16	DN16	30.00	17.20	16.00	20.00	70.00
DN-BW70-25	DN25	40.00	26.20	24.00	28.00	70.00
DN-BW70-40	DN40	55.00	41.20	40.50	44.50	70.00
DN-BW70-50	DN50	75.00	52.20	50.60	57.00	70.00

NOTE: 316/L MATERIAL AVAILABLE ON REQUEST.

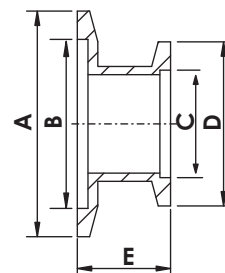
DN Flanges & Fittings

DN 直管大小头, 短管 DN STRAIGHT REDUCERS, SHORT

材质：不锈钢304/L Material: 304/L



Catalogue PN	Size	A	B	C	D	E
DN-SRNS-16x10	DN16xDN10	30.00	17.20	12.20	30.00	28.00
DN-SRNS-25x10	DN25xDN10	40.00	26.20	12.20	30.00	28.00
DN-SRNS-25x16	DN25xDN16	40.00	26.20	17.20	30.00	28.00
DN-SRNS-40x10	DN40xDN10	55.00	41.20	12.20	30.00	28.00
DN-SRNS-40x16	DN40xDN16	55.00	41.20	17.20	30.00	28.00
DN-SRNS-40x25	DN40xDN25	55.00	41.20	26.20	40.00	28.00
DN-SRNS-50x16	DN50xDN16	75.00	52.20	17.20	30.00	28.00
DN-SRNS-50x25	DN50xDN25	75.00	52.20	26.20	40.00	28.00
DN-SRNS-50x40	DN50xDN40	75.00	52.20	41.20	55.00	28.00



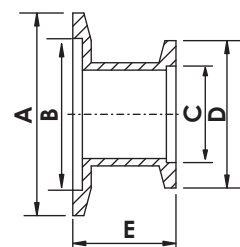
K F
DN

DN 直管大小头, 长管 DN STRAIGHT REDUCERS, LONG

材质：不锈钢304/L Material: 304/L



Catalogue PN	Size	A	B	C	D	E
DN-SRNL-25x16	DN25xDN16	40.00	26.20	17.20	30.00	40.00
DN-SRNL-40x16	DN40xDN16	55.00	41.20	17.20	30.00	40.00
DN-SRNL-40x25	DN40xDN25	55.00	41.20	26.20	40.00	40.00
DN-SRNL-50x16	DN50xDN16	75.00	52.20	17.20	30.00	40.00
DN-SRNL-50x25	DN50xDN25	75.00	52.20	26.20	40.00	40.00
DN-SRNL-50x40	DN50xDN40	75.00	52.20	41.20	55.00	40.00

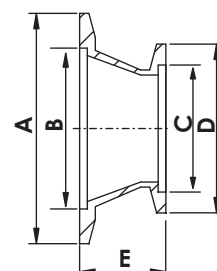


DN 同心缩管大小头 DN CONICAL REDUCERS

材质：不锈钢304/L Material: 304/L



Catalogue PN	Size	A	B	C	D	E
DN-CRN-25x16	DN25xDN16	40.00	26.20	17.20	30.00	28.00
DN-CRN-40x16	DN40xDN16	55.00	41.20	17.20	30.00	28.00
DN-CRN-40x25	DN40xDN25	55.00	41.20	26.20	40.00	28.00
DN-CRN-50x16	DN50xDN16	75.00	52.40	17.20	30.00	28.00
DN-CRN-50x25	DN50xDN25	75.00	52.40	26.20	40.00	28.00
DN-CRN-50x40	DN50xDN40	75.00	52.40	41.20	55.00	28.00



NOTE: 316/L MATERIAL AVAILABLE ON REQUEST.

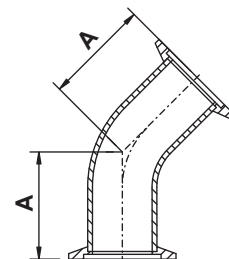
DN Flanges & Fittings

DN 45° 直部弯头

DN 45° ELBOWS WITH TANGENTS

材质：不锈钢304/L Material: 304/L

管表面处理：喷砂 Tube surface: sandblasting



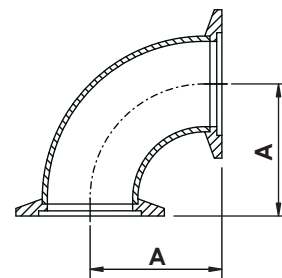
Catalogue PN	Size	A	Tube Size
DN-45ELT-10	DN10	30.00	14.0 X 2.0mmt
DN-45ELT-16	DN16	26.00	20.0 X 1.5mmt
DN-45ELT-25	DN25	32.00	28.0 X 1.5mmt
DN-45ELT-40	DN40	40.00	44.5 X 2.0mmt
DN-45ELT-50	DN50	51.00	54.0 X 2.0mmt

DN 90° 弯头

DN 90° ELBOWS

材质：不锈钢304/L Material: 304/L

管表面处理：喷砂 Tube surface: sandblasting



Catalogue PN	Size	A	Tube Size
DN-90EL-10	DN10	30.00	14.0 x 2.0mmt
DN-90EL-16	DN16	40.00	20.0 x 1.5mmt
DN-90EL-25	DN25	50.00	28.0 x 1.5mmt
DN-90EL-40	DN40	65.00	44.5 x 2.0mmt
DN-90EL-50	DN50	70.00	54.0 x 2.0mmt

**K F
DN**

NOTE: 316/L MATERIAL AVAILABLE ON REQUEST.

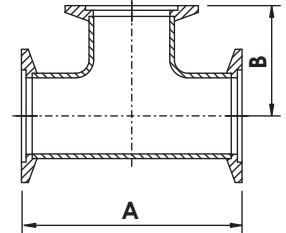
NOTE: POLISHED AND ELECTRO- POLISHED TUBE FINISHES AVAILABLE ON REQUEST.

DN Flanges & Fittings

DN 同径三通 DN EQUAL TEES

材质：不锈钢304/L Material: 304/L

管表面处理：喷砂 Tube surface: sandblasting



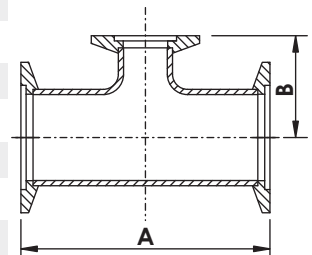
Catalogue PN	Size	A	B	Tube Size
DN-ET-10	DN10	60.00	30.00	14.0 x 2.0mmt
DN-ET-16	DN16	80.00	40.00	20.0 x 1.5mmt
DN-ET-25	DN25	100.00	50.00	28.0 x 1.5mmt
DN-ET-40	DN40	130.00	65.00	44.5 x 2.0mmt
DN-ET-50	DN50	140.00	70.00	54.0 x 2.0mmt
DN-ET-57	DN57	140.00	70.00	57.0 x 3.0mmt

**K F
DN**

DN 异径三通 DN REDUCING TEES

材质：不锈钢304/L Material: 304/L

管表面处理：喷砂 Tube surface: sandblasting



Catalogue PN	Size	A	B	Tube Size 1	Tube Size 2
DN-RT-25x10	DN25 x DN10	100.00	40.00	28.0 x 1.5mmt	14.0 x 2.0mmt
DN-RT-25x16	DN25 x DN16	100.00	40.00	28.0 x 1.5mmt	20.0 x 1.5mmt
DN-RT-40x16	DN40 x DN16	130.00	40.00	44.5 x 2.0mmt	20.0 x 1.5mmt
DN-RT-40x25	DN40 x DN25	130.00	50.00	44.5 x 2.0mmt	28.0 x 1.5mmt
DN-RT-50x16	DN50 x DN16	140.00	50.00	20.0 x 1.5mmt	20.0 x 1.5mmt
DN-RT-50x25	DN50 x DN25	140.00	65.00	54.0 x 2.0mmt	28.0 x 1.5mmt
DN-RT-50x40	DN50 x DN40	140.00	65.00	54.2 x 2.0mmt	44.5 x 2.0mmt
DN-RT-57x16	DN57 x DN16	140.00	50.00	57.0 x 3.0mmt	20.0 x 1.5mmt
DN-RT-57x25	DN57 x DN25	140.00	65.00	57.0 x 3.0mmt	28.0 x 1.5mmt
DN-RT-57x40	DN57 x DN40	140.00	65.00	57.0 x 3.0mmt	44.5 x 2.0mmt

NOTE: 316/L MATERIAL AVAILABLE ON REQUEST.

NOTE: POLISHED AND ELECTRO- POLISHED TUBE FINISHES AVAILABLE ON REQUEST.

DN Flanges & Fittings

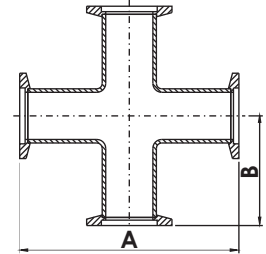
DN 同径四通 DN 4-WAY CROSSES

材质：不锈钢304/L Material: 304/L

管表面处理：喷砂 Tube surface: sandblasting



Catalogue PN	Size	A	B	Tube Size
DN-4C-10	DN10	60.00	30.00	14.0 x 2.0mmt
DN-4C-16	DN16	80.00	40.00	20.0 x 1.5mmt
DN-4C-25	DN25	100.00	50.00	28.0 x 1.5mmt
DN-4C-40	DN40	130.00	65.00	44.5 x 2.0mmt
DN-4C-50	DN50	140.00	70.00	54.0 x 2.0mmt
DN-4C-57	DN57	140.00	70.00	57.0 x 3.0mmt



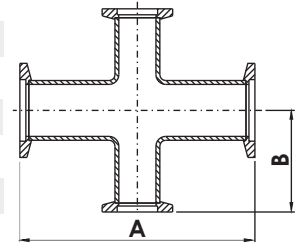
DN 异径四通 DN REDUCING 4-WAY CROSSES

材质：不锈钢304/L Material: 304/L

管表面处理：喷砂 Tube surface: sandblasting



Catalogue PN	Size	A	B	Tube Size 1	Tube Size 2
DN-4RC-25x10	DN25 x DN10	100.00	40.00	28.0 x 1.5mmt	14.0 x 2.0mmt
DN-4RC-25x16	DN25 x DN16	100.00	40.00	28.0 x 1.5mmt	20.0 x 1.5mmt
DN-4RC-40x10	DN40 x DN10	130.00	40.00	44.5 x 2.0mmt	14.0 x 2.0mmt
DN-4RC-40x16	DN40 x DN16	130.00	40.00	44.5 x 2.0mmt	20.0 x 1.5mmt
DN-4RC-40x25	DN40 x DN25	130.00	50.00	44.5 x 2.0mmt	28.0 x 1.5mmt
DN-4RC-50x16	DN50 x DN16	140.00	50.00	54.0 x 2.0mmt	20.0 x 1.5mmt
DN-4RC-50x25	DN50 x DN25	140.00	50.00	54.0 x 2.0mmt	28.0 x 1.5mmt
DN-4RC-50x40	DN50 x DN40	140.00	65.00	54.0 x 2.0mmt	44.5 x 2.0mmt
DN-4RC-57x16	DN57 x DN16	140.00	50.00	57.0 x 3.0mmt	20.0 x 1.5mmt
DN-4RC-57x25	DN57 x DN25	140.00	50.00	57.0 x 3.0mmt	28.0 x 1.5mmt
DN-4RC-57x40	DN57 x DN40	140.00	65.00	57.0 x 3.0mmt	44.5 x 2.0mmt



NOTE: 316/L MATERIAL AVAILABLE ON REQUEST.

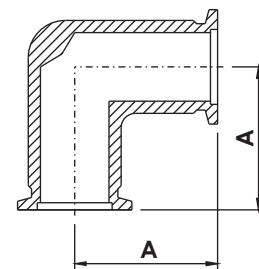
NOTE: POLISHED AND ELECTRO- POLISHED TUBE FINISHES AVAILABLE ON REQUEST.

**K F
DN**

DN Machined Fittings

DN 90° 弯头,机械加工 DN 90° ELBOW, MACHINED

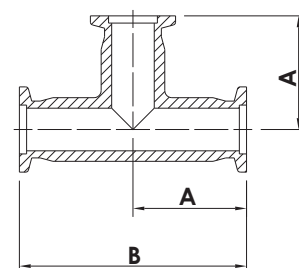
材质：镁铝合金AL6061 Material: Magnesium aluminum alloy AL 6061



Catalogue PN	Size	A
DN-90ELMA-16-AL	KF16	40.00
DN-90ELMA-25-AL	KF25	50.00
DN-90ELMA-40-AL	KF40	65.00
DN-90ELMA-50-AL	KF50	70.00

DN 同径三通,机械加工 DN EQUAL TEES, MACHINED

材质：镁铝合金AL6061 Material: Magnesium aluminum alloy AL 6061

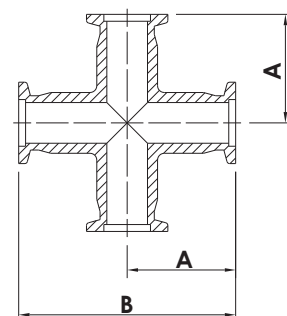


K F
DN

Catalogue PN	Size	A	B
DN-ETMA-16-AL	KF16	40.00	80.00
DN-ETMA-25-AL	KF25	50.00	100.00
DN-ETMA-40-AL	KF40	65.00	130.00
DN-ETMA-50-AL	KF50	70.00	140.00

DN 同径四通,机械加工 DN 4-WAY CROSSES, MACHINED

材质：镁铝合金AL6061 Material: Magnesium aluminum alloy AL 6061



Catalogue PN	Size	A	B
DN-4CMA-16-AL	KF16	40.00	80.00
DN-4CMA-25-AL	KF25	50.00	100.00
DN-4CMA-40-AL	KF40	65.00	130.00
DN-4CMA-50-AL	KF50	70.00	140.00

ISO FLANGES & FITTINGS



ISO FLANGE & TUBE

ISO flanges are specially designed for pipes with diameters above 2". They are divided into ISO-K (clamp flanges) and ISO-F (screw flanges) due to different locking tools. ISO flanges follow ISO specifications, in line with world standards.

The sealing method is the same as the KF series, and the O-ring is used to achieve the sealing effect of vacuum, and the minimum pressure can reach 1×10^{-8} Torr.

Clamp-type ISO flange (ISO-K) is fixed by "two-way clip screws", so there is no directional assembly interference problem in terms of combination configuration.

Screw-type ISO flange (ISO-F) adopts screws, which are evenly locked around the flange. Although there is directionality, the uniformity of combined strength and sealing is stronger than that of ISO-K.

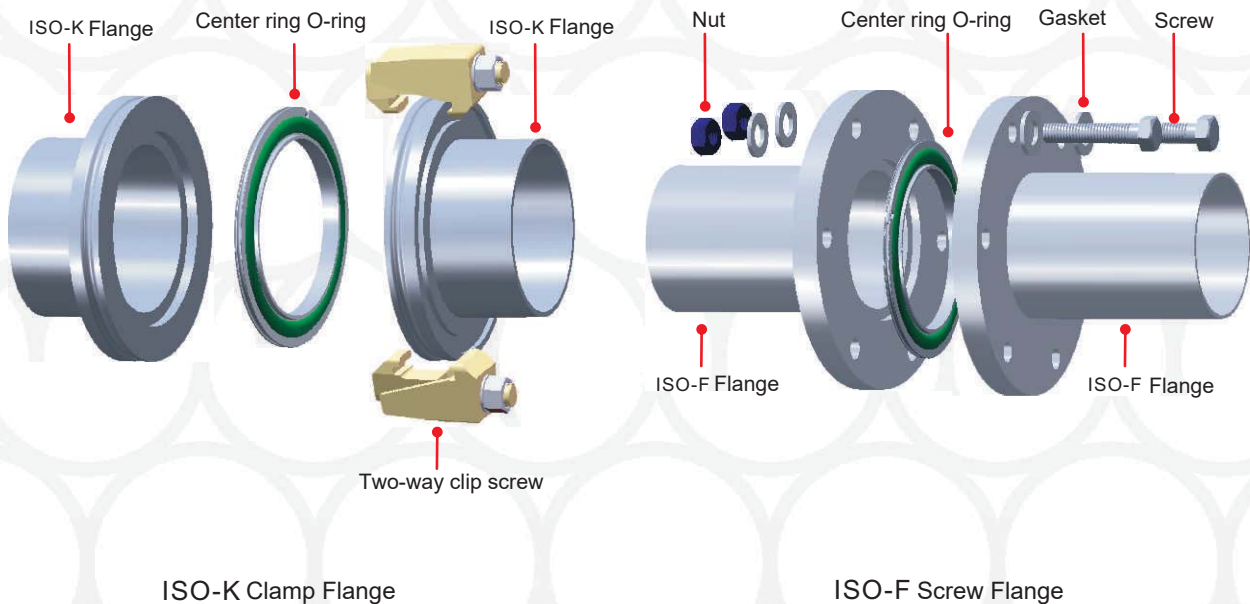
We also make a series of adapters for the ISO series, please refer to the Adapters section of the catalog.

Specification

APPLICATION: HIGH VACUUM
MATERIAL: 304/L; 316LN, AL 6061
Flange size range: ISO63-ISO320
Standard pipe diameter size range: 1/2"-6"
(Pipe fittings above 8" are customized)
Pipe Surface: sandblasting
Pressure range:
760 Torr $\sim 1 \times 10^{-8}$ Torr
Gasket Material: FKM, Buna-N or Silicone
Temperature range: Less than 200 degrees Celsius
(less than 150 degrees Celsius for long-term operation)

Cleaning and Packaging

All welding points of the product are 100% leak tested. The product is cleaned by ultrasonic cleaning equipment, and the water quality is deionized water that meets the requirements of semiconductors. Packaging environment The combination and packaging of the overall product are done in a high clean environment to ensure the cleanliness of the product.



ISO法兰与管件

ISO 法兰是专门替2"以上管径设计，其中因不同的锁附工具，分成 ISO-K (卡箍式法兰)与ISO-F (螺丝式法兰)。 ISO法兰遵循ISO规范，与世界规格接轨。

密封方式与KF系列相同，采用O型环紧迫达成封真空效果，最低压力可达 1×10^{-8} Torr。

卡箍式ISO法兰(ISO-K)采用“双向夹子螺丝”做固定，所以在组合配置方面，没有任何方向性的组装干涉问题。

螺丝式ISO法兰(ISO-F)采用螺丝，均匀的在法兰四周锁附，虽然有方向性，但是对于组合强度与密封的均匀性比 ISO-K来的强。

我们也针对 ISO系列作一连串的转接头，请参照目录转接头部分。

标准规格

应用：高真空

材质：304/L，316/L，镁铝合金AL6061

法兰尺寸范围：ISO63~ISO320

标准管件径尺寸范围：1/2" ~ 6"

(超过8"管径为定制化管道)

管件表面处理：喷砂

压力范围：760 Torr ~ 1×10^{-8} Torr

密封垫片材质：FKM，Buna-N或硅胶

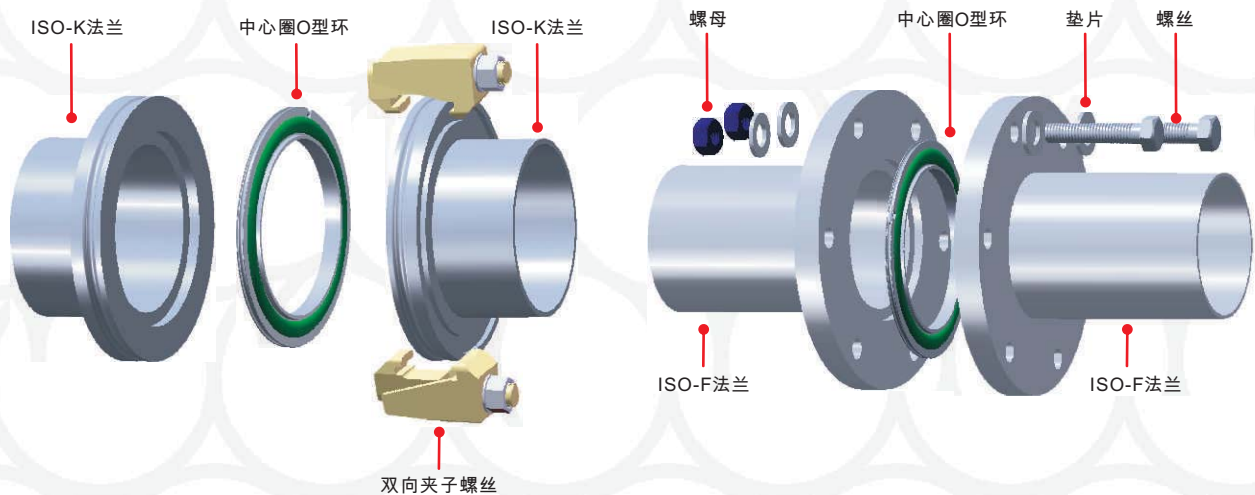
温度范围：小于摄氏200度

(长期操作小于摄氏150度)

清洁与包装

产品所有的焊接点100%的测漏检验，产品清洗经过超音波清洗设备清洗，水质使用合乎半导体要求去离子水。

包装环境于高洁净环境做整体产品的组合与包装，确保产品的洁净度。



ISO-K 卡箍式法兰

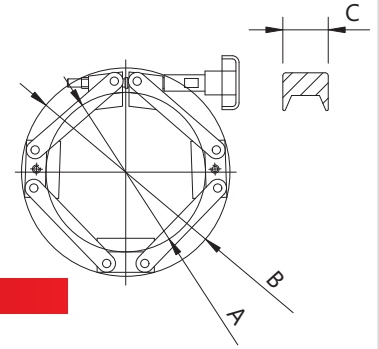
ISO-F 螺丝式法兰

ISO Flanges & Fittings

链式卡箍

NW CHAIN CLAMPS

材质 ALUMINUM Material: Aluminum



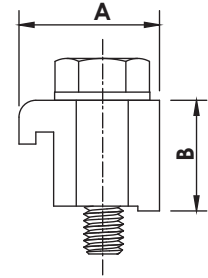
Catalogue PN	Size	A	B	C
NW-CC-63	NW63	98.00	134.40	30.00
NW-CC-80	NW80	117.10	153.00	30.00
NW-CC-100	NW100	136.50	171.68	30.00
NW-CC-160	NW160	197.90	231.70	30.00

ISO-K 单向夹子螺丝

ISO-K SINGLE CLAWS

材质：不锈钢304 Material: 304/L

螺丝规格：公制牙 Screw Specifications: Metric Thread



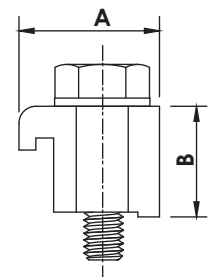
Catalogue PN	Size	A	B	Thread Size
ISOK-SC-63100M	ISO63-ISO100	24.10	22.50	M8 x 35L
ISOK-SC-160250M	ISO160-ISO250	27.50	23.50	M10 x 35L
ISOK-SC-320500M	ISO320-ISO500	30.00	30.00	M12 x 50L
ISOK-SC-630M	ISO630	30.00	35.00	M12 x 50L

ISO-K 单向夹子螺丝

ISO-K SINGLE CLAWS

材质：镁铝合金 Material: Magnesium aluminum alloy

螺丝规格：公制牙与英制牙 Screw Specifications: Metric Thread and Inch Thread



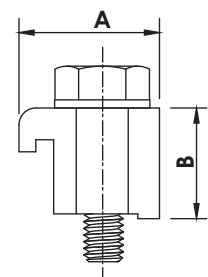
Catalogue PN	Size	A	B	Thread Size
ISOK-SC-63100M-AL	ISO63-ISO100	24.10	22.50	M8 x 35L
ISOK-SC-63100-AL	ISO63-ISO100	24.10	22.50	5/16"-18
ISOK-SC-160250M-AL	ISO160-ISO250	27.50	23.50	M10 x 35L
ISOK-SC-160250-AL	ISO160-ISO250	27.50	23.50	5/16"-18L

ISO-K 单向夹子螺丝

ISO-K SINGLE CLAWS

材质：铁镀锌 Material: Iron galvanized

螺丝规格：公制牙 Screw Specifications: Metric Thread

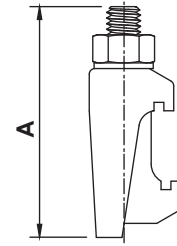


Catalogue PN	Size	A	B	Thread Size
ISOK-SC-63100M-ZP	ISO60-ISO100	24.10	22.50	M8 x 35L
ISOK-SC-160250M-ZP	ISO160-ISO250	27.50	23.50	M10 x 35L
ISOK-SC-320250M-ZP	ISO320-ISO500	30.00	30.00	M12 x 50L

ISO Flanges & Fittings

ISO-K 双向夹子螺丝 ISO-K DOUBLE CLAWS

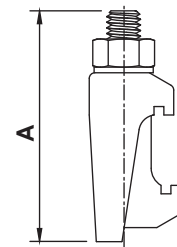
材质：不锈钢304 Material: 304



Catalogue PN	Size	A	Bolt Size
ISOK-DC-63250M	ISO63-ISO250	60.00	M10
ISOK-DC-320500M	ISO320-ISO500	76.50	M12

ISO-K 双向夹子螺丝 ISO-K DOUBLE CLAWS

材质：铁镀锌 Material: Iron galvanized

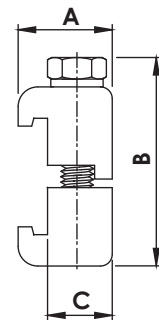


Catalogue PN	Size	A	Bolt Size
ISOK-DC-63250M-ZP	ISO63-ISO250	60.00	M10
ISOK-DC-320500M-ZP	ISO320-ISO500	76.50	M12

ISO-K 双向夹子螺丝 ISO-K DOUBLE CLAWS

材质：铸铝 Material: cast aluminum

螺丝规格：公制牙与英制牙 Screw Specifications: Metric Thread and Inch Thread



Catalogue PN	Size	A	B	C	Thread Size
ISOK-DC-63100M-AL	ISO63-ISO100	24.00	50.00	16.50	M8x45L
ISOK-DC-63100-AL	ISO63-ISO100	24.00	50.00	16.50	5/16"-18
ISOK-DC-160250M-AL	ISO160-ISO250	27.50	51.60	20.00	M10x45L
ISOK-DC-160250-AL	ISO160-ISO250	27.50	51.60	20.00	5/16"-18

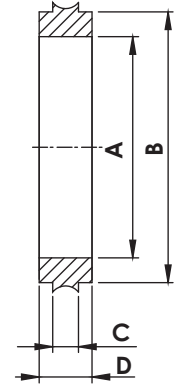
ISO

ISO Flanges & Fittings

ISO-K 中心圈

ISO CENTERING RINGS

材质：不锈钢304/L Material: 304/L



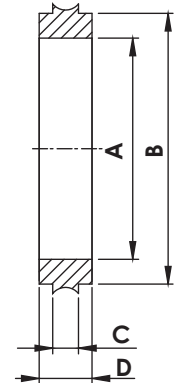
Catalogue PN	Size	A	B	C	D
ISO-CR-63	ISO63	68.00	70.00	3.90	8
ISO-CR-80	ISO80	81.00	83.00	3.90	8
ISO-CR-100	ISO100	100.00	102.00	3.90	8
ISO-CR-160	ISO160	151.00	153.00	3.90	8
ISO-CR-200	ISO200	210.00	213.00	3.90	8
ISO-CR-250	ISO250	256.00	261.00	3.90	8
ISO-CR-320	ISO320	311.15	316.48	5.50	14

NOTE: 316/L MATERIAL AVAILABLE ON REQUEST.

ISO-K 中心圈

ISO CENTERING RINGS, ALUMINUM

材质：镁铝合金AL6061 Material: Magnesium aluminum alloy AL 6061



Catalogue PN	Size	A	B	C	D
ISO-CR-63-AL	ISO63	68.00	70.00	3.90	8
ISO-CR-80-AL	ISO80	81.00	83.00	3.90	8
ISO-CR-100-AL	ISO100	100.00	102.00	3.90	8
ISO-CR-160-AL	ISO160	151.00	153.00	3.90	8
ISO-CR-200-AL	ISO200	210.00	213.00	3.90	8
ISO-CR-250-AL	ISO250	256.00	261.00	3.90	8
ISO-CR-320-AL	ISO320	311.15	316.48	5.50	14

ISO

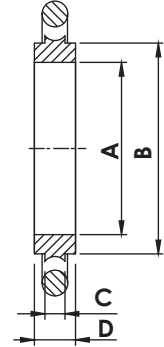
ISO Flanges & Fittings

ISO 中心圈O型环

ISO CENTERING RINGS with O-RINGS

材质：不锈钢304/L Material: 304/L

O型环：FKM O ring: FKM



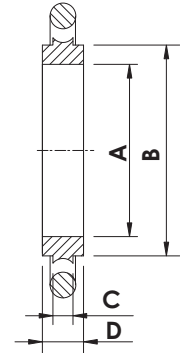
Catalogue PN	Size	A	B	C	D
ISO-CRO-63	ISO63	68.00	70.00	3.90	8
ISO-CRO-80	ISO80	81.00	83.00	3.90	8
ISO-CRO-100	ISO100	100.00	102.00	3.90	8
ISO-CRO-160	ISO160	151.00	153.00	3.90	8
ISO-CRO-200	ISO200	210.00	213.00	3.90	8
ISO-CRO-250	ISO250	256.00	261.00	3.90	8
ISO-CRO-320	ISO320	311.15	316.48	5.50	14

ISO 中心圈O型环

ISO CENTERING RINGS with O-RINGS, ALUMINUM

材质：镁铝合金AL6061 Material: Magnesium aluminum alloy AL 6061

O型环：FKM O ring: FKM



Catalogue PN	Size	A	B	C	D
ISO-CRO-63-AL	ISO63	68.00	70.00	3.90	8
ISO-CRO-80-AL	ISO80	81.00	83.00	3.90	8
ISO-CRO-100-AL	ISO100	100.00	102.00	3.90	8
ISO-CRO-160-AL	ISO160	151.00	153.00	3.90	8
ISO-CRO-200-AL	ISO200	210.00	213.00	3.90	8
ISO-CRO-250-AL	ISO250	256.00	261.00	3.90	8
ISO-CRO-320-AL	ISO320	311.15	316.48	5.50	14

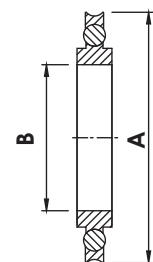
ISO 中心圈O型环耐压环

ISO CENTERING RINGS with O-RINGS and SPACERS

材质：不锈钢304/L Material: 304/L

O型环：FKM O ring: FKM

垫圈材质：镁铝合金AL6061 Gasket Material: Magnesium aluminum alloy AL 6061



Catalogue PN	Size	A	B
ISO-CROS-63	ISO63	94.00	68.00
ISO-CROS-80	ISO80	109.00	81.00
ISO-CROS-100	ISO100	128.00	100.00
ISO-CROS-160	ISO160	179.00	151.00
ISO-CROS-200	ISO200	239.00	210.00
ISO-CROS-250	ISO250	287.00	256.00
ISO-CROS-320	ISO320	346.33	311.15
ISO-CROS-400	ISO400	428.80	392.93

NOTE: 316/L OR ALUMINUM MATERIAL AVAILABLE ON REQUEST.
NOTE: FFKM O-RING MATERIAL AVAILABLE ON REQUEST.

ISO

ISO Flanges & Fittings

ISO 过滤网中心圈O型环组

ISO SCREENED CENTERING RINGS with O-RINGS

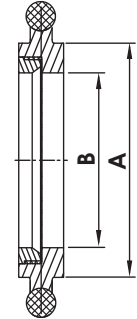
材质：不锈钢304/L Material: 304/L

不锈钢网密度70目(一平方寸有70孔洞)

O型环：FKM

Stainless steel mesh density 70 mesh (70 holes per square inch)

O ring: FKM

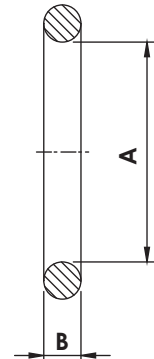


Catalogue PN	Size	A	B
ISO-CROSC-100	ISO100	102.00	92.00
ISO-CROSC-160	ISO160	153.00	139.70
ISO-CROSC-200	ISO200	213.00	206.80

ISO O型环

ISO REPLACEMENT O-RINGS

材质：FKM Material: FKM



Catalogue PN	Size	A	B
ISO-RO-63	ISO63	72.39	5.33
ISO-RO-80	ISO80	85.09	5.33
ISO-RO-100	ISO100	104.14	5.33
ISO-RO-160	ISO160	151.77	5.33
ISO-RO-200	ISO200	215.27	5.33
ISO-RO-250	ISO250	266.07	5.33
ISO-RO-320	ISO320	316.87	6.99
ISO-RO-400	ISO400	393.07	6.99

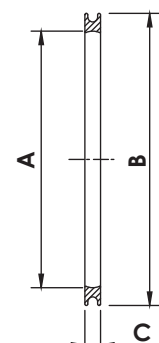
NOTE: FFKM O-RING MATERIAL AVAILABLE ON REQUEST.

ISO 耐压环

ISO SPACER RINGS

材质：镁铝合金AL6061

Material: Magnesium aluminum alloy AL 6061



Catalogue PN	Size	A	B	C
ISO-OR-63	ISO63	88.80	98.00	3.75
ISO-OR-80	ISO80	101.80	111.00	3.75
ISO-OR-100	ISO100	120.80	130.00	3.75
ISO-OR-160	ISO160	170.10	179.30	3.75
ISO-OR-200	ISO200	232.10	241.30	3.75
ISO-OR-250	ISO250	282.10	291.30	3.75
ISO-OR-320	ISO320	335.50	344.00	5.59
ISO-OR-400	ISO400	420.30	428.80	5.59

ISO Flanges & Fittings

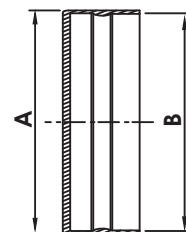
ISO-K 法兰保护盖

ISO-K FLANGE PROTECTION CAPS, PLASTIC

材质：PE Material: PE



Catalogue PN	Size	A	B
ISOK-PC-63	ISO63	97.8	95.0
ISOK-PC-80	ISO80	113.0	110.0
ISOK-PC-100	ISO100	133.0	130.0
ISOK-PC-160	ISO160	183.0	180.0
ISOK-PC-200	ISO200	242.0	240.0
ISOK-PC-250	ISO250	293.4	290.0
ISOK-PC-320	ISO320	373.9	370.5
ISOK-PC-400	ISO400	454.2	450.8



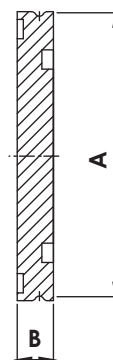
ISO-K 盲法兰

ISO-K BLANK FLANGES

材质：不锈钢304/L，316/L与镁铝合金AL6061
Material: 304/L, 316L & Magnesium aluminum alloy AL 6061



Catalogue PN	Size	A	B
ISOK-BL-63	ISO63	95.00	11.90
ISOK-BL-80	ISO80	110.00	11.90
ISOK-BL-100	ISO100	130.00	11.90
ISOK-BL-160	ISO160	180.00	11.90
ISOK-BL-200	ISO200	240.00	12.00
ISOK-BL-250	ISO250	290.00	12.00
ISOK-BL-320	ISO320	370.00	17.00



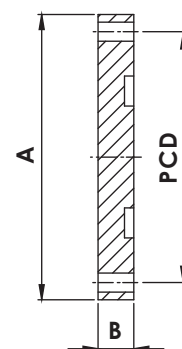
ISO-F 盲法兰

ISO-F BLANK FLANGES

材质：不锈钢304/L Material: 304/L



Catalogue PN	Size	A	B	Bolt Holes	PCD
ISOF-BL-63	ISO63	130.00	11.90	4	110
ISOF-BL-80	ISO80	145.00	11.90	8	125
ISOF-BL-100	ISO100	165.00	11.90	8	145
ISOF-BL-160	ISO160	225.00	16.00	8	200
ISOF-BL-200	ISO200	285.00	16.00	12	260
ISOF-BL-250	ISO250	335.00	16.00	12	310
ISOF-BL-320	ISO320	425.00	20.00	12	395

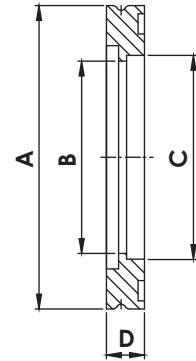


NOTE: 316/L OR ALUMINUM MATERIAL AVAILABLE ON REQUEST.

ISO Flanges & Fittings

ISO-K 通径法兰 ISO-K BORED FLANGES

材质：不锈钢304/L Material: 304/L

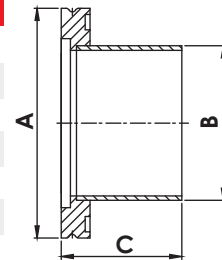


Catalogue PN	Size	A	B	C	D
ISOK-BF-63	ISO63	95.00	60.20	63.80	11.90
ISOK-BF-80	ISO80	110.00	72.90	76.50	11.90
ISOK-BF-100	ISO100	130.00	98.30	101.90	11.90
ISOK-BF-160	ISO160	180.00	149.10	152.90	11.90
ISOK-BF-200	ISO200	240.00	197.10	203.70	11.90
ISOK-BF-250	ISO250	290.00	247.70	254.50	11.90
ISOK-BF-320	ISO320	370.00	296.82	305.56	17.00

ISO-K 半短管 ISO-K HALF NIPPLES

材质：不锈钢304/L Material: 304/L

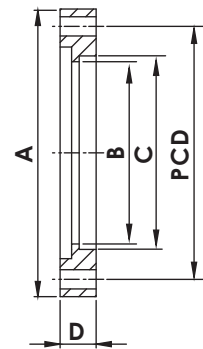
管表面处理：喷砂 Tube surface: sandblasting



Catalogue PN	Size	A	B	C
ISOK-HN-63	ISO63	95.00	63.50	100.00
ISOK-HN-80	ISO80	110.00	76.20	100.00
ISOK-HN-100	ISO100	130.00	101.60	100.00
ISOK-HN-160	ISO160	180.00	152.40	100.00
ISOK-HN-200	ISO200	240.00	203.20	100.00
ISOK-HN-250	ISO250	290.00	254.00	100.00
ISOK-HN-320	ISO320	370.00	304.80	100.00

ISO-F 通径法兰 ISO-F BORED FLANGES

材质：不锈钢304/L Material: 304/L

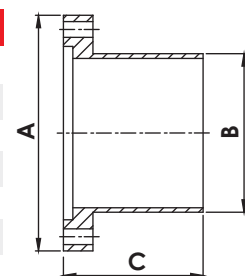


Catalogue PN	Size	A	B	C	D	PCD
ISO-F-BF-63	ISO63	130.00	61.90	63.80	11.90	110.00
ISO-F-BF-80	ISO80	145.00	74.60	76.50	11.90	125.00
ISO-F-BF-100	ISO100	165.10	99.30	101.92	11.90	145.00
ISO-F-BF-160	ISO160	225.00	149.20	152.90	16.00	200.00
ISO-F-BF-200	ISO200	285.00	200.00	203.70	16.00	260.00
ISO-F-BF-250	ISO250	335.00	250.80	254.50	16.00	310.00
ISO-F-BF-320	ISO320	425.00	318.00	324.40	20.00	395.00

ISO-F 半短管 ISO-F HALF NIPPLES

材质：不锈钢304/L Material: 304/L

管表面处理：喷砂 Tube surface: sandblasting



Catalogue PN	Size	A	B	C
ISO-F-HN-63	ISO63	130.00	63.50	100.00
ISO-F-HN-80	ISO80	145.00	76.20	100.00
ISO-F-HN-100	ISO100	165.10	101.60	100.00
ISO-F-HN-160	ISO160	225.00	152.40	100.00
ISO-F-HN-200	ISO200	285.00	203.20	100.00
ISO-F-HN-250	ISO250	335.00	254.00	100.00
ISO-F-HN-320	ISO320	425.00	304.80	100.00

NOTE: 316/L OR ALUMINUM MATERIAL AVAILABLE ON REQUEST.

ISO

ISO Flanges & Fittings

ISO-K 短管

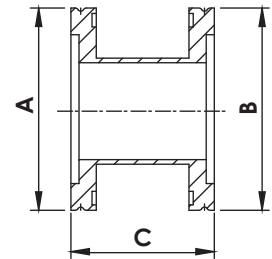
ISO-K FULL NIPPLES

材质：不锈钢304/L Material: 304/L

管表面处理：喷砂 Tube surface: sandblasting



Catalogue PN	Size	A	B	C
ISOK-FN-63	ISO63	ISO63	ISO63	165.10
ISOK-FN-63-1	ISO63	ISO63	ISO63	175.80
ISOK-FN-80	ISO80	ISO80	ISO80	196.10
ISOK-FN-80-1	ISO80	ISO80	ISO80	177.80
ISOK-FN-100	ISO100	ISO100	ISO100	209.80
ISOK-FN-100-1	ISO100	ISO100	ISO100	215.90
ISOK-FN-160	ISO160	ISO160	ISO160	273.30
ISOK-FN-160-1	ISO160	ISO160	ISO160	275.80



ISO-K 直管大小头

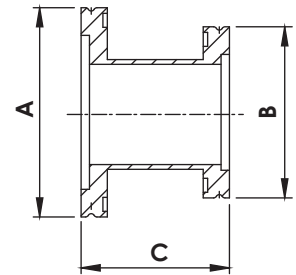
ISO-K REDUCER NIPPLES

材质：不锈钢304/L Material: 304/L

管表面处理：喷砂 Tube surface: sandblasting



Catalogue PN	Size	A	B	C
ISOK-SRN-80x63	ISO80x63	ISO80	ISO63	76.20
ISOK-SRN-100x63	ISO100x63	ISO100	ISO63	76.20
ISOK-SRN-100x80	ISO100x80	ISO100	ISO80	76.20
ISOK-SRN-160x63	ISO160x63	ISO160	ISO63	76.20
ISOK-SRN-160x80	ISO160x80	ISO160	ISO80	76.20
ISOK-SRN-160x100	ISO160x100	ISO160	ISO100	76.20



ISO-K 同心缩径大小头

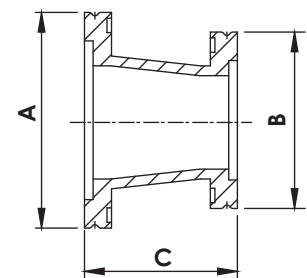
ISO-K CONICAL REDUCERS

材质：不锈钢304/L Material: 304/L

管表面处理：喷砂 Tube surface: sandblasting



Catalogue PN	Size	A	B	C
ISOK-CRN-80x63	ISO80x63	ISO80	ISO63	104.70
ISOK-CRN-100x63	ISO100x63	ISO100	ISO63	104.70
ISOK-CRN-100x80	ISO100x80	ISO100	ISO80	104.70



NOTE: 316/L MATERIAL AVAILABLE ON REQUEST.

NOTE: POLISHED AND ELECTRO-POLISHED TUBE FINISHES AVAILABLE ON REQUEST.

ISO

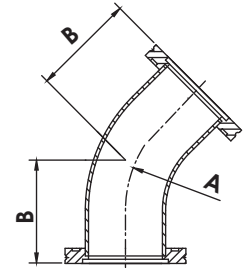
ISO Flanges & Fittings

ISO-K 45° 弯头

ISO-K 45° ELBOWS

材质：不锈钢304/L Material: 304/L

管表面处理：喷砂 Tube surface: sandblasting



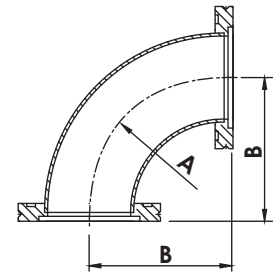
Catalogue PN	Size	A	B
ISOK-45EL-63	ISO63	95.25	82.30
ISOK-45EL-80	ISO80	114.30	100.00
ISOK-45EL-100	ISO100	152.40	128.50

ISO-K 90° 弯头

ISO-K 90° ELBOWS

材质：不锈钢304/L Material: 304/L

管表面处理：喷砂 Tube surface: sandblasting



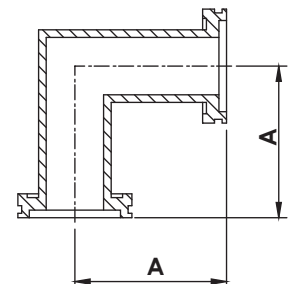
Catalogue PN	Size	A	B
ISOK-90EL-63	ISO63	95.25	101.60
ISOK-90EL-80	ISO80	114.30	120.60
ISOK-90EL-100	ISO100	152.40	158.70

ISO-K 90° 直角弯头

ISO-K 90° MITERED ELBOWS

材质：不锈钢304/L Material: 304/L

管表面处理：喷砂 Tube surface: sandblasting



Catalogue PN	Size	A
ISOK-90MEL-63	ISO63	82.60
ISOK-90MEL-63-1	ISO63-H	87.93
ISOK-90MEL-80	ISO80	88.90
ISOK-90MEL-80-1	ISO80-H	108.00
ISOK-90MEL-100	ISO100	104.90
ISOK-90MEL-100-1	ISO100-H	108.00
ISOK-90MEL-160	ISO160	138.00
ISOK-90MEL-160-1	ISO160-H	160.20

NOTE: 316/L MATERIAL AVAILABLE ON REQUEST.

NOTE: POLISHED AND ELECTRO- POLISHED TUBE FINISHES AVAILABLE ON REQUEST.

ISO Flanges & Fittings

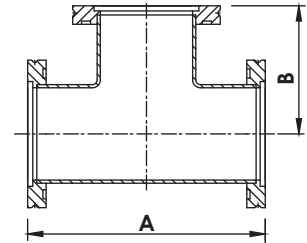
ISO-K 同径三通 ISO-K EQUAL TEES

材质：不锈钢304/L Material: 304/L

管表面处理：喷砂 Tube surface: sandblasting



Catalogue PN	Size	A	B
ISOK-ET-63	ISO63	165.00	82.50
ISOK-ET-63-1	ISO63-H	176.00	88.00
ISOK-ET-80	ISO80	177.80	88.90
ISOK-ET-80-1	ISO80-H	196.00	98.00
ISOK-ET-100	ISO100	209.40	104.70
ISOK-ET-100-1	ISO100-H	216.00	108.00
ISOK-ET-160	ISO160	266.60	133.30



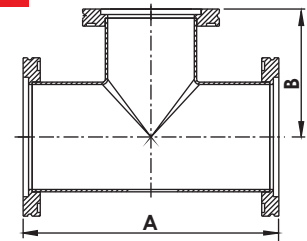
ISO-K 异径三通 ISO-K REDUCING TEES

材质：不锈钢304/L Material: 304/L

管表面处理：喷砂 Tube surface: sandblasting



Catalogue PN	Size	A	B
ISOK-RT-80x63	ISO80xISO63	177.70	88.90
ISOK-RT-100x63	ISO100xISO63	209.70	101.60
ISOK-RT-100x80	ISO100xISO80	209.70	101.60
ISOK-RT-160x63	ISO160xISO63	266.60	126.90
ISOK-RT-160x80	ISO160xISO80	266.60	126.90
ISOK-RT-160x100	ISO160xISO100	266.60	130.30



ISO

NOTE: 316/L MATERIAL AVAILABLE ON REQUEST.

NOTE: POLISHED AND ELECTRO-POLISHED TUBE FINISHES AVAILABLE ON REQUEST.

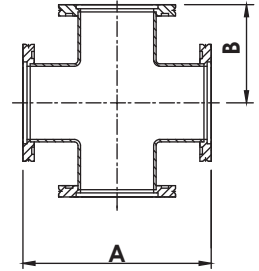
ISO Flanges & Fittings

ISO-K 同径四通

ISO-K 4-WAY CROSSES

材质：不锈钢304/L Material: 304/L

管表面处理：喷砂 Tube surface: sandblasting



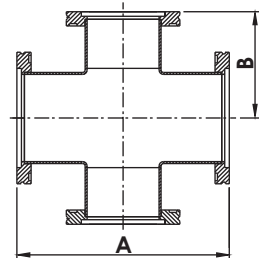
Catalogue PN	Size	A	B
ISOK-4C-63	ISO63	165.00	82.50
ISOK-4C-80	ISO80	177.80	88.90
ISOK-4C-80-1	ISO80-H	196.00	98.00
ISOK-4C-100	ISO100	209.40	104.70
ISOK-4C-100-1	ISO100-H	216.00	108.00
ISOK-4C-160	ISO160	266.60	133.30

ISO-K 异径四通

ISO-K 4-WAY REDUCING CROSSES

材质：不锈钢304/L Material: 304/L

管表面处理：喷砂 Tube surface: sandblasting



Catalogue PN	Size	A	B
ISOK-4RC-80x63	ISO80xISO63	177.70	88.85
ISOK-4RC-100x63	ISO100xISO63	209.70	101.55
ISOK-4RC-100x80	ISO100xISO80	209.70	101.55
ISOK-4RC-160x63	ISO160xISO63	266.60	126.95
ISOK-4RC-160x80	ISO160xISO80	266.60	126.95
ISOK-4RC-160x100	ISO160xISO100	266.60	130.25

NOTE: 316/L MATERIAL AVAILABLE ON REQUEST.

NOTE: POLISHED AND ELECTRO- POLISHED TUBE FINISHES AVAILABLE ON REQUEST.

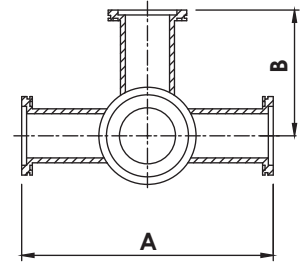
ISO Flanges & Fittings

ISO-K 五通

ISO-K 5-WAY CROSSES

材质：不锈钢304/L Material: 304/L

管表面处理：喷砂 Tube surface: sandblasting



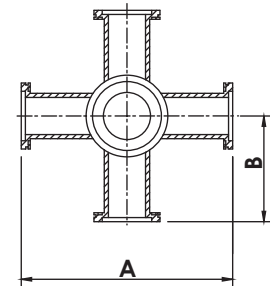
Catalogue PN	Size	A	B
ISOK-5C-63	ISO63	165.00	82.50
ISOK-5C-80	ISO80	177.80	88.90
ISOK-5C-100	ISO100	209.80	104.90
ISOK-5C-160	ISO160	266.60	133.30

ISO-K 六通

ISO-K 6-WAY CROSSES

材质：不锈钢304/L Material: 304/L

管表面处理：喷砂 Tube surface: sandblasting



Catalogue PN	Size	A	B
ISOK-6C-63	ISO63	165.00	82.50
ISOK-6C-80	ISO80	177.80	88.90
ISOK-6C-100	ISO100	209.80	104.90
ISOK-6C-160	ISO160	266.60	133.30

ISO

NOTE: 316/L MATERIAL AVAILABLE ON REQUEST.

NOTE: POLISHED AND ELECTRO- POLISHED TUBE FINISHES AVAILABLE ON REQUEST.

ADAPTORS



ADAPTORS

KF/CF 直管转接头

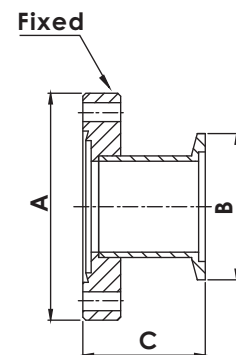
KF to CF FLANGE ADAPTORS

材质：不锈钢304/L Material: 304/L

管表面处理：喷砂 Tube surface: sandblasting



Catalogue PN	Size	A	B	C
AD-KFCF-10x133	KF10xCF1.33	CF1.33	KF 10	44.50
AD-KFCF-16x133	KF16xCF1.33	CF1.33	KF 16	44.50
AD-KFCF-16x275	KF16xCF2.75	CF2.75	KF 16	45.20
AD-KFCF-25x212	KF25xCF2.12	CF2.12	KF 25	44.50
AD-KFCF-25x275	KF25xCF2.75	CF2.75	KF 25	45.20
AD-KFCF-40x275	KF40xCF2.75	CF2.75	KF 40	45.20
AD-KFCF-40x338	KF40xCF3.38	CF3.38	KF 40	45.70
AD-KFCF-50x133	KF50xCF1.33	CF1.33	KF 50	49.50
AD-KFCF-50x275	KF50xCF2.75	CF2.75	KF 50	49.50
AD-KFCF-50x338	KF50xCF3.38	CF3.38	KF 50	45.70
AD-KFCF-50x450	KF50xCF4.50	CF4.50	KF 50	49.50



ISO-K/CF 直管转接头

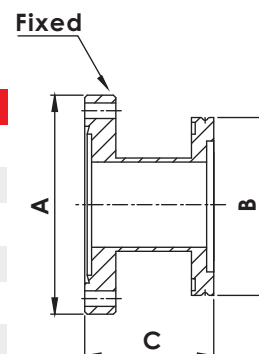
ISO to CF FLANGE ADAPTORS

材质：不锈钢304/L Material: 304/L

管表面处理：喷砂 Tube surface: sandblasting



Catalogue PN	Size	A	B	C
AD-ISOCF-63x450	ISO63xCF4.50	CF4.50	ISO63	110.00
AD-ISOCF-80x462	ISO80xCF4.62	CF4.62	ISO80	110.00
AD-ISOCF-80x600	ISO80xCF6.00	CF6.00	ISO80	110.00
AD-ISOCF-100x600	ISO100xCF6.00	CF6.00	ISO100	111.00
AD-ISOCF-160x800	ISO160xCF8.00	CF8.00	ISO160	113.00
AD-ISOCF-200x1000	ISO200xCF10.00	CF10.00	ISO200	113.00



ISO-K/KF 直管转接头

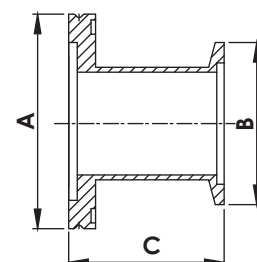
ISO to KF FLANGE ADAPTORS

材质：不锈钢304/L Material: 304/L

管表面处理：喷砂 Tube surface: sandblasting



Catalogue PN	Size	A	B	C
AD-ISOKF-63x25	ISO63-KF25	ISO63	KF25	46.50
AD-ISOKF-63x40	ISO63-KF40	ISO63	KF40	46.30
AD-ISOKF-63x50	ISO63-KF50	ISO63	KF50	46.30
AD-ISOKF-80x40	ISO80-KF40	ISO80	KF40	46.30
AD-ISOKF-80x50	ISO80-KF50	ISO80	KF50	46.30
AD-ISOKF-100x40	ISO100-KF40	ISO100	KF40	46.30
AD-ISOKF-100x50	ISO100-KF50	ISO100	KF50	46.30



NOTE: 316/L MATERIAL AVAILABLE ON REQUEST.

NOTE: POLISHED AND ELECTRO-POLISHED TUBE FINISHES AVAILABLE ON REQUEST.

AD

ADAPTORS

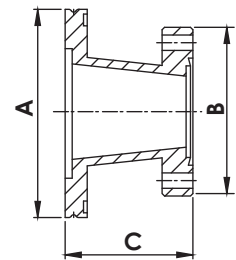
ISO / CF 同心缩径转接头 ISO to CF FLANGE CONICAL ADAPTORS

材质：不锈钢304/L Material: 304/L

管表面处理：喷砂 Tube surface: sandblasting



Catalogue PN	Size	A	B	C
AD-C-ISOCF-63x275	ISO63-CF2.75	ISO63	CF2.75	71.90
AD-C-ISOCF-63x338	ISO63-CF3.38	ISO63	CF3.38	72.30
AD-C-ISOCF-63x462	ISO63-CF4.62	ISO63	CF4.62	105.50
AD-C-ISOCF-63x600	ISO63-CF6.00	ISO63	CF6.00	109.50
AD-C-ISOCF-80x275	ISO80-CF2.75	ISO80	CF2.75	103.70
AD-C-ISOCF-80x338	ISO80-CF3.38	ISO80	CF3.38	104.10
AD-C-ISOCF-80x450	ISO80-CF4.50	ISO80	CF4.50	107.90
AD-C-ISOCF-80x600	ISO80-CF6.00	ISO80	CF6.00	109.50
AD-C-ISOCF-100x338	ISO100-CF3.38	ISO100	CF3.38	104.10
AD-C-ISOCF-100x450	ISO100-CF4.50	ISO100	CF4.50	107.90
AD-C-ISOCF-100x462	ISO100-CF4.62	ISO100	CF4.62	105.50



AD

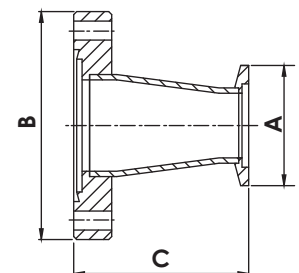
KF / CF 同心缩径转接头 KF to CF FLANGE CONICAL ADAPTORS

材质：不锈钢304/L Material: 304/L

管表面处理：喷砂 Tube surface: sandblasting



Catalogue PN	Size	A	B	C
AD-C-KFCF-16x212	KF16-CF2.12	KF 16	CF2.12	42.90
AD-C-KFCF-16x275	KF16-CF2.75	KF 16	CF2.75	69.30
AD-C-KFCF-25x133	KF25-CF1.33	KF 25	CF1.33	43.15
AD-C-KFCF-25x275	KF25-CF2.75	KF 25	CF2.75	69.30
AD-C-KFCF-25x338	KF25-CF3.38	KF25	CF3.38	69.90
AD-C-KFCF-40x133	KF40-CF1.33	KF 40	CF1.33	68.55
AD-C-KFCF-40x212	KF40-CF2.12	KF 40	CF2.12	68.30
AD-C-KFCF-40x338	KF40-CF3.38	KF 40	CF3.38	69.90
AD-C-KFCF-40x450	KF40-CF4.50	KF 40	CF4.50	73.70
AD-C-KFCF-40x462	KF40-CF4.62	KF 40	CF4.62	103.10
AD-C-KFCF-50x212	KF50-CF2.12	KF 50	CF2.12	68.30
AD-C-KFCF-50x275	KF50-CF2.75	KF 50	CF2.75	69.30
AD-C-KFCF-50x450	KF50-CF4.50	KF 50	CF4.50	73.70
AD-C-KFCF-50x462	KF50-CF4.62	KF 50	CF4.62	103.10
AD-C-KFCF-50x600	KF50-CF6.00	KF 50	CF6.00	106.90



NOTE: 316/L MATERIAL AVAILABLE ON REQUEST.

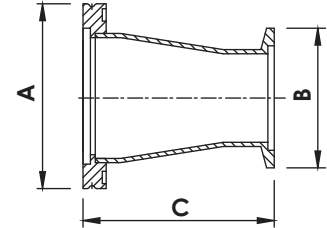
NOTE: POLISHED AND ELECTRO- POLISHED TUBE FINISHES AVAILABLE ON REQUEST.

ADAPTORS

ISO-K/KF 同心缩径转接头 ISO to KF FLANGE CONICAL ADAPTORS

材质：不锈钢304/L Material: 304/L

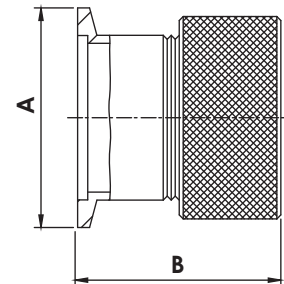
管表面处理：喷砂 Tube surface: sandblasting



Catalogue PN	Size	A	B	C
AD-C-ISOKF-63x40	ISO63-KF40	ISO63	KF40	70.40
AD-C-ISOKF-63x50	ISO63-KF50	ISO63	KF50	70.40
AD-C-ISOKF-80x40	ISO80-KF40	ISO80	KF40	102.20
AD-C-ISOKF-80x50	ISO80-KF50	ISO80	KF50	102.20
AD-C-ISOKF-100x50	ISO100-KF50	ISO100	KF50	102.20

KF 快速接管接头 KF FLANGES to QUICK COUPLINGS with VITON O-RINGS

材质：不锈钢304/L Material: 304/L



Catalogue PN	Size	Tube Size	A	B
AD-QC-KF10x050	NW10-1/2"	1/2"	30.00	38.10
AD-QC-KF16x025	NW16-1/4"	1/4"	30.00	35.60
AD-QC-KF16x050	NW16-1/2"	1/2"	30.00	38.10
AD-QC-KF16x075	NW16-3/4"	3/4"	30.00	45.70
AD-QC-KF25x050	NW25-1/2"	1/2"	40.00	38.10
AD-QC-KF25x062	NW25-5/8"	5/8"	40.00	43.20
AD-QC-KF25x075	NW25-3/4"	3/4"	40.00	45.70
AD-QC-KF25x100	NW25-1.0"	1.0"	40.00	50.80
AD-QC-KF25x112	NW25-1 1/8"	1-1/8"	40.00	50.80
AD-QC-KF40x050	NW40-1/2"	1/2"	55.00	37.60
AD-QC-KF40x075	NW40-3/4"	3/4"	55.00	45.70
AD-QC-KF40x100	NW40-1.0"	1.0"	55.00	50.80
AD-QC-KF40x112	NW40-1 1/8"	1-1/8"	55.00	50.80
AD-QC-KF40x125	NW40-1 1/4"	1-1/4"	55.00	50.80
AD-QC-KF40x138	NW40-1 3/8"	1-3/8"	55.00	53.30
AD-QC-KF40x150	NW40-1 1/2"	1-1/2"	55.00	61.00
AD-QC-KF50x050	NW50-1/2"	1/2"	75.00	38.10
AD-QC-KF50x075	NW50-3/4"	3/4"	75.00	45.70
AD-QC-KF50x100	NW50-1.0"	1.0"	75.00	50.80
AD-QC-KF50x112	NW50-1 1/8"	1-1/8"	75.00	50.80
AD-QC-KF50x150	NW50-1 1/2"	1-1/2"	75.00	61.00
AD-QC-KF50x200	NW50-2.0"	2.0"	75.00	61.00

ADAPTORS

KF/VCR 母接头

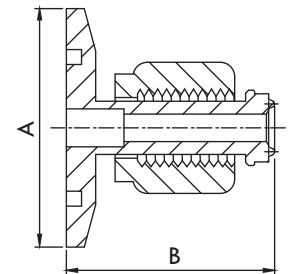
KF FLANGES to FEMALE VCRS

材质：KF接头不锈钢304/L，VCR母接头 316/L

Material: KF connector stainless steel 304/L, VCR female connector 316/L



Catalogue PN	Size	A	B
AD-KFVCRF-16x025	KF16-1/4"	30.00	37.10
AD-KFVCRF-16x038	KF16-3/8"	30.00	41.90
AD-KFVCRF-16x050	KF16-1/2"	30.00	41.90
AD-KFVCRF-25x025	KF25-1/4"	40.00	37.10
AD-KFVCRF-25x038	KF25-3/8"	40.00	41.90
AD-KFVCRF-25x050	KF25-1/2"	40.00	41.90
AD-KFVCRF-25x075	KF25-3/4"	40.00	55.40
AD-KFVCRF-40x025	KF40-1/4"	55.00	37.10
AD-KFVCRF-40x038	KF40-3/8"	55.00	41.90
AD-KFVCRF-40x050	KF40-1/2"	55.00	41.90
AD-KFVCRF-40x075	KF40-3/4"	55.00	55.40
AD-KFVCRF-50x025	KF50-1/4"	75.00	37.10
AD-KFVCRF-50x038	KF50-3/8"	75.00	41.90
AD-KFVCRF-50x050	KF50-1/2"	75.00	41.90
AD-KFVCRF-50x075	KF50-3/4"	75.00	55.40



AD

KF/VCR 公接头

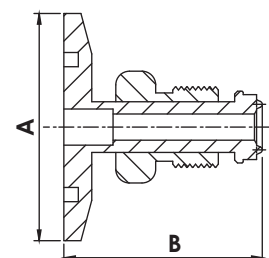
KF FLANGES to MALE VCRS

材质：KF接头不锈钢304/L，VCR公接头 316/L

Material: KF connector stainless steel 304/L, VCR male connector 316/L



Catalogue PN	Size	A	B
AD-KFVCRM-16x025	KF16x1/4"	30.00	37.10
AD-KFVCRM-16x038	KF16x3/8"	30.00	41.90
AD-KFVCRM-16x050	KF16x1/2"	30.00	41.90
AD-KFVCRM-25x025	KF25x1/4"	40.00	37.10
AD-KFVCRM-25x038	KF25x3/8"	40.00	41.90
AD-KFVCRM-25x050	KF25x1/2"	40.00	41.90
AD-KFVCRM-25x075	KF25x-3/4"	40.00	55.40
AD-KFVCRM-40x025	KF40x1/4"	55.00	37.10
AD-KFVCRM-40x038	KF40x3/8"	55.00	41.90
AD-KFVCRM-40x050	KF40x1/2"	55.00	41.90
AD-KFVCRM-40x075	KF40x3/4"	55.00	55.40
AD-KFVCRM-50x025	KF50x1/4"	75.00	37.10
AD-KFVCRM-50x038	KF50x3/8"	75.00	41.90
AD-KFVCRM-50x050	KF50x1/2"	75.00	41.90
AD-KFVCRM-50x075	KF50x3/4"	75.00	55.40

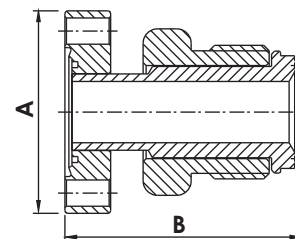


CF/VCR 公接头

CF FLANGES to MALE VCRS

材质：CF接头不锈钢304/L，VCR母接头 316/L

Material: CF connector stainless steel 304/L, VCR female connector 316/L



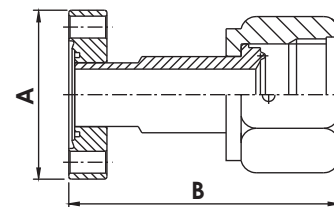
Catalogue PN	Size	A	B
AD-CFVCRM-133x025	CF16x1/4"	CF1.33"	36.30
AD-CFVCRM-133x038	CF16x3/8"	CF1.33"	39.27
AD-CFVCRM-133x050	CF16x1/2"	CF1.33"	39.27
AD-CFVCRM-275x025	CF35x1/4"	CF2.75"	38.61
AD-CFVCRM-275x038	CF35x3/8"	CF2.75"	43.41
AD-CFVCRM-275x050	CF35x1/2"	CF2.75"	43.41

CF/VCR 母接头

CF FLANGES to FEMALE VCRS

材质：CF接头不锈钢304/L，VCR母接头 316/L

Material: CF connector stainless steel 304/L, VCR female connector 316/L



Catalogue PN	Size	A	B
AD-CFVCRF-133x025	CF16x1/4"	CF1.33"	36.30
AD-CFVCRF-133x038	CF16x3/8"	CF1.33"	39.27
AD-CFVCRF-133x050	CF16x1/2"	CF1.33"	39.27
AD-CFVCRF-275x025	CF35x1/4"	CF2.75"	38.61
AD-CFVCRF-275x038	CF35x3/8"	CF2.75"	43.41
AD-CFVCRF-275x050	CF35x1/2"	CF2.75"	43.41

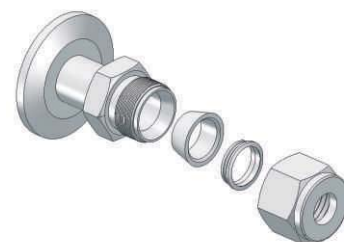
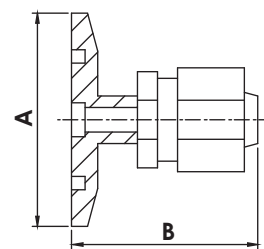
KF 双卡套接头

KF FLANGES to TWO-FERRULE FITTINGS

材质：KF接头不锈钢304/L，双卡套接头 316/L
Material: KF fitting stainless steel 304/L, double ferrule fitting 316/L



Catalogue PN	Size	A	B
AD-KFSWG-10x025	KF10-1/4"	30.00	33.30
AD-KFSWG-16x025	KF16-1/4"	30.00	39.40
AD-KFSWG-16x038	KF16-3/8"	30.00	41.40
AD-KFSWG-16x050	KF16-1/2"	30.00	50.00
AD-KFSWG-25x025	KF25-1/4"	40.00	39.40
AD-KFSWG-25x038	KF25-3/8"	40.00	41.40
AD-KFSWG-25x050	KF25-1/2"	40.00	50.00
AD-KFSWG-25x075	KF25-3/4"	40.00	52.80
AD-KFSWG-25x100	KF25-1.0"	40.00	65.70
AD-KFSWG-40x025	KF40-1/4"	55.00	39.40
AD-KFSWG-40x038	KF40-3/8"	55.00	41.40
AD-KFSWG-40x050	KF40-1/2"	55.00	50.00
AD-KFSWG-40x075	KF40-3/4"	55.00	52.80
AD-KFSWG-40x100	KF40-1.0"	55.00	65.70
AD-KFSWG-50x025	KF50-1/4"	75.00	39.40
AD-KFSWG-50x038	KF50-3/8"	75.00	41.40
AD-KFSWG-50x050	KF50-1/2"	75.00	50.00
AD-KFSWG-50x075	KF50-3/4"	75.00	52.80
AD-KFSWG-50x100	KF50-1.0"	75.00	65.70



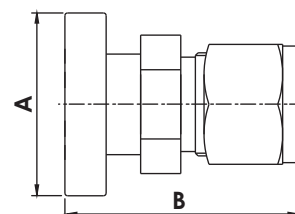
CF 双卡套接头

CF FLANGES to TWO-FERRULE FITTINGS

材质：CF接头不锈钢304/L，双卡套接头 316/L
Material: CF fitting stainless steel 304/L, double ferrule fitting 316/L



Catalogue PN	Size	A	B
AD-CFSWG-133x050	CF133-1/2"	CF1.33"	43.18
AD-CFSWG-133x025	CF133-1/4"	CF1.33"	34.80
AD-CFSWG-133x038	CF133-3/8"	CF1.33"	42.05
AD-CFSWG-275x100	CF275-1.0"	CF2.75"	67.51
AD-CFSWG-275x050	CF275-1/2"	CF2.75"	46.41
AD-CFSWG-275x025	CF275-1/4"	CF2.75"	38.81
AD-CFSWG-275x075	CF275-3/4"	CF2.75"	55.81
AD-CFSWG-275x038	CF275-3/8"	CF2.75"	42.91



ADAPTORS

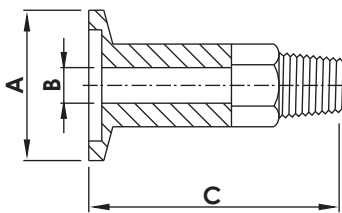


Diagram A

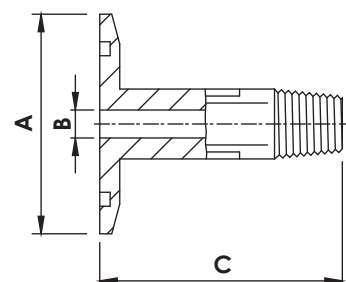


Diagram B

KF 管公牙接头

KF FLANGES to MALE PIPE ADAPTORS

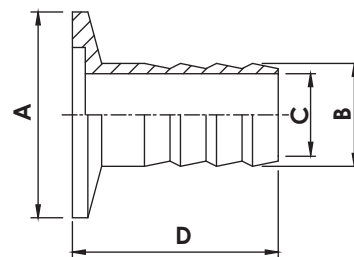
材质：不锈钢304/L Material: 304/L

Catalogue PN	Size - NPT	A	B	C	Diagram
AD-KFNPTM-16x012	KF16-1/8 NPT	30.00	4.70	40.00	A
AD-KFNPTM-16x025	KF16-1/4 NPT	30.00	7.10	50.00	A
AD-KFNPTM-25x012	KF25-1/8 NPT	40.00	4.70	40.00	B
AD-KFNPTM-25x025	KF25-1/4 NPT	40.00	7.10	50.00	B
AD-KFNPTM-25x050	KF25-1/2 NPT	40.00	11.90	75.00	B
AD-KFNPTM-25x075	KF25-3/4 NPT	40.00	15.90	75.00	B
AD-KFNPTM-40x025	KF40-1/4 NPT	55.00	7.10	50.00	B
AD-KFNPTM-40x050	KF40-1/2 NPT	55.00	11.90	75.00	B
AD-KFNPTM-40x075	KF40-3/4 NPT	55.00	15.90	75.00	B
AD-KFNPTM-50x025	KF50-1/4 NPT	75.00	7.10	50.00	B
AD-KFNPTM-50x050	KF50-1/2 NPT	75.00	11.90	75.00	B
AD-KFNPTM-50x075	KF50-3/4 NPT	75.00	15.90	75.00	B

KF 软管接口

KF FLANGES to HOSE NOZZLES

材质：不锈钢304/L Material: 304/L



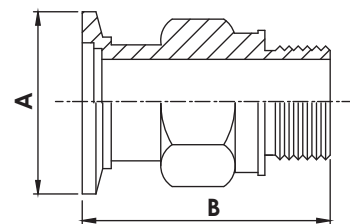
Catalogue PN	Size	A	B	C	D
AD-HS-KF10x008M	KF10-8	30.00	8.00	4.00	40.00
AD-HS-KF10x012M	KF10-12	30.00	12.00	8.00	40.00
AD-HS-KF16x008M	KF16-8	30.00	8.00	4.00	40.00
AD-HS-KF16x012M	KF16-12	30.00	12.00	8.00	40.00
AD-HS-KF25x008M	KF25-8	40.00	8.00	4.00	40.00
AD-HS-KF25x012M	KF25-12	40.00	12.00	8.00	40.00
AD-HS-KF25x016M	KF25-16	40.00	16.00	12.00	40.00
AD-HS-KF25x020M	KF25-20	40.00	20.00	16.00	40.00
AD-HS-KF40x012M	KF40-12	55.00	12.00	8.00	40.00
AD-HS-KF40x016M	KF40-16	55.00	16.00	12.00	40.00
AD-HS-KF40x020M	KF40-20	55.00	20.00	16.00	40.00
AD-HS-KF40x025M	KF40-25	55.00	25.00	20.00	40.00
AD-HS-KF50x025M	KF50-25	75.00	25.00	20.00	40.00

NOTE: 316/L MATERIAL AVAILABLE ON REQUEST.

ADAPTORS

KF 活塞式泵接头 WELCH PUMP ADAPTORS

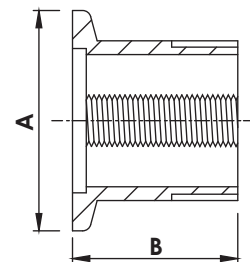
材质：不锈钢304/L Material: 304/L



Catalogue PN	Size	A	B
AD-WP-062	KF16-WP1	30.00	45.00
AD-WP-075	KF16-WP2	30.00	65.00
AD-WP-100	KF25-WP1	40.00	70.10
AD-WP-150	KF40-WP1	55.00	65.00
AD-WP-175	KF40-WP2	55.00	65.30

KF/NPT 母牙接头 KF FLANGES to NPT ADAPTORS

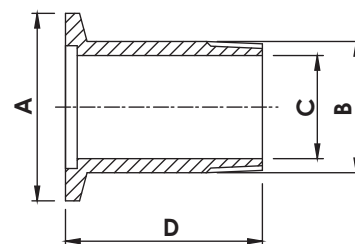
材质：不锈钢304/L Material: 304/L



Catalogue PN	Size	A	B
AD-KFNPTF-10x012	NW10 1/8"NPT	30.00	19.10
AD-KFNPTF-10x025	NW10 1/4"NPT	30.00	19.10
AD-KFNPTF-16x012	NW16 1/8"NPT	30.00	19.10
AD-KFNPTF-16x025	NW16 1/4"NPT	30.00	19.10
AD-KFNPTF-25x012	NW25 1/8"NPT	40.00	19.10
AD-KFNPTF-25x025	NW25 1/4"NPT	40.00	19.10
AD-KFNPTF-25x050	NW25 1/2"NPT	40.00	25.40
AD-KFNPTF-25x038	NW25 3/8"NPT	40.00	19.10
AD-KFNPTF-40x012	NW40 1/8"NPT	55.00	25.40
AD-KFNPTF-40x025	NW40 1/4"NPT	55.00	25.40
AD-KFNPTF-40x050	NW40 1/2"NPT	55.00	25.40
AD-KFNPTF-40x075	NW40 3/4"NPT	55.00	25.40
AD-KFNPTF-50x012	NW50 1/8"NPT	75.00	25.40
AD-KFNPTF-50x025	NW50 1/4"NPT	75.00	25.40
AD-KFNPTF-50x050	NW50 1/2"NPT	75.00	25.40
AD-KFNPTF-50x075	NW50 3/4"NPT	75.00	25.40

NOTE: 316/L MATERIAL AVAILABLE ON REQUEST.

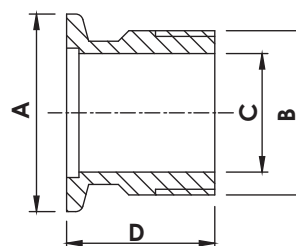
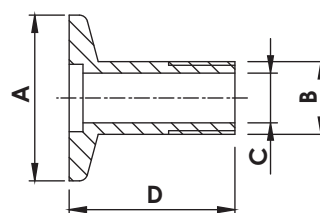
ADAPTORS



KF/BSPT公牙接头 BSPT ADAPTORS

材质：不锈钢304/L Material: 304/L

Catalogue PN	Size	A	B	C	D	BSPT
AD-KFBSPT-10x025	DN10-1/4"	30.00	13.16	9.00	30.00	1/4"x19BSPT
AD-KFBSPT-10x038	DN10-3/8"	30.00	16.66	10.00	30.00	3/8"x19BSPT
AD-KFBSPT-16x050	DN16-1/2"	30.00	20.96	16.00	30.00	1/2"x14BSPT
AD-KFBSPT-25x038	DN25-3/8"	40.00	16.66	10.00	30.00	3/8"x19BSPT
AD-KFBSPT-25x075	DN25-3/4"	40.00	26.44	20.00	30.00	3/4"x14BSPT
AD-KFBSPT-25x100	DN25-1.0"	40.00	33.25	24.00	30.00	1.0"x11BSPT
AD-KFBSPT-40x125	DN40-1.25"	55.00	41.91	35.00	30.00	1.25"x11BSPT
AD-KFBSPT-40x150	DN40-1.5"	55.00	47.80	41.00	30.00	1.5"x11BSPT
AD-KFBSPT-50x200	DN50-2.0"	75.00	59.61	51.00	30.00	2.0"x11BSPT



KF/BSPT公牙接头 BSP ADAPTORS

材质：不锈钢304/L Material: 304/L

KF25-1.0" & KF40-1.5"

Catalogue PN	Size	A	B	C	D	BSP
AD-KFBSP-10x025	DN10-1/4"	30.00	13.16	9.00	30.00	1/4"x19BSP
AD-KFBSP-10x038	DN10-3/8"	30.00	16.66	10.00	30.00	3/8"x19BSP
AD-KFBSP-16x025	DN16-1/4"	30.00	13.16	9.00	30.00	1/4"x19BSP
AD-KFBSP-16x050	DN16-1/2"	30.00	20.96	16.00	30.00	1/2"x14BSP
AD-KFBSP-25x050	DN25-1/2"	40.00	20.96	16.00	30.00	1/2"x14BSP
AD-KFBSP-25x075	DN25-3/4"	40.00	26.44	20.00	30.00	3/4"x14BSP
AD-KFBSP-25x100	DN25-1.0"	40.00	33.25	24.00	30.00	1.0"x11BSP
AD-KFBSP-40x025	DN40-1/4"	55.00	13.16	9.00	30.00	1/4"x19BSP
AD-KFBSP-40x050	DN40-1/2"	55.00	20.96	16.00	30.00	1/2"x14BSP
AD-KFBSP-40x125	DN40-1 1/4"	55.00	41.91	35.00	30.00	1.25"x11BSP
AD-KFBSP-40x150	DN40-1 1/2"	55.00	47.80	41.00	30.00	1.5"x11BSP
AD-KFBSP-50x200	DN50-2.0"	75.00	59.61	51.00	35.00	2.0"x11BSP

NOTE: 316/L MATERIAL AVAILABLE ON REQUEST.

AD

WELD FITTINGS



焊式45°弯头

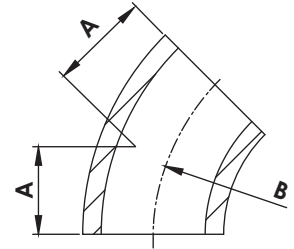
WELD 45° ELBOWS

材质：不锈钢304/L Material: 304/L

管表面处理：振动研磨 Tube Surface: Vibration Grinding



Catalogue PN	Size	Wall Thickness	A	B
BW-45EL-050	1/2"	1.65	7.95	19.10
BW-45EL-075	3/4"	1.65	11.91	28.60
BW-45EL-100	1.0"	1.65	15.77	38.10
BW-45EL-150	1.5"	1.65	23.67	57.15
BW-45EL-200	2.0"	1.65	31.57	76.20
BW-45EL-250	2.5"	1.65	39.70	95.25
BW-45EL-300	3.0"	1.65	47.35	114.30
BW-45EL-400	4.0"	2.11	63.12	152.40



焊式45°直部弯头

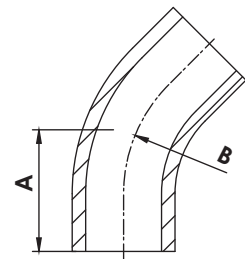
WELD 45° ELBOWS with TANGENTS

材质：不锈钢304/L Material: 304/L

管表面处理：振动研磨 Tube Surface: Vibration Grinding



Catalogue PN	Size	Wall Thickness	A	B
BW-45ELT-075	3/4"	1.65	19.40	28.60
BW-45ELT-100	1.0"	1.65	30.18	38.10
BW-45ELT-150	1.5"	1.65	41.28	57.15
BW-45ELT-200	2.0"	1.65	58.72	76.20
BW-45ELT-250	2.5"	1.65	76.20	95.25
BW-45ELT-300	3.0"	1.65	93.70	114.30
BW-45ELT-400	4.0"	2.11	122.20	152.40



NOTE: 316/L MATERIAL AVAILABLE ON REQUEST.

WELD FITTINGS

焊式90°弯头

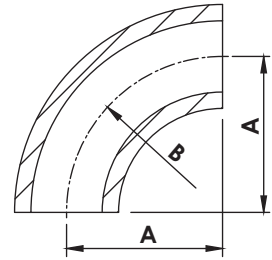
WELD 90° ELBOWS

材质：不锈钢304/L Material: 304/L

管表面处理：振动研磨 Tube Surface: Vibration Grinding



Catalogue PN	Size	Wall Thickness	A	B
BW-90EL-050	1/2"	1.65	19.10	19.10
BW-90EL-075	3/4"	1.65	28.60	28.60
BW-90EL-100	1.0"	1.65	38.10	38.10
BW-90EL-150	1.5"	1.65	57.15	57.15
BW-90EL-200	2.0"	1.65	76.20	76.20
BW-90EL-250	2.5"	1.65	95.25	95.25
BW-90EL-300	3.0"	1.65	114.30	114.30
BW-90EL-400	4.0"	2.11	152.40	152.40



焊式90°直部弯头

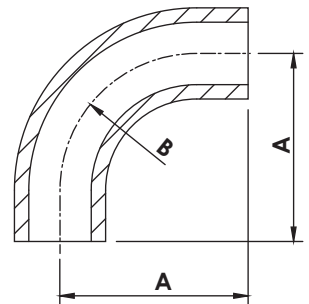
WELD 90° ELBOWS with TANGENTS

材质：不锈钢304/L Material: 304/L

管表面处理：振动研磨 Tube Surface: Vibration Grinding



Catalogue PN	Size	Wall Thickness	A	B
BW-90ELT-075	3/4"	0.89	36.07	25.40
BW-90ELT-075-L	3/4"	1.65	64.78	28.60
BW-90ELT-100	1.0"	1.65	46.23	38.10
BW-90ELT-100L	1.0"	1.65	52.40	38.10
BW-90ELT-150	1.5"	1.65	61.21	57.15
BW-90ELT-150L	1.5"	1.65	74.60	57.15
BW-90ELT-200	2.0"	1.65	103.12	76.20
BW-90ELT-250	2.5"	1.65	131.83	95.25
BW-90ELT-300	3.0"	1.65	160.30	114.30
BW-90ELT-400	4.0"	2.11	211.07	152.40



NOTE: 316/L MATERIAL AVAILABLE ON REQUEST.

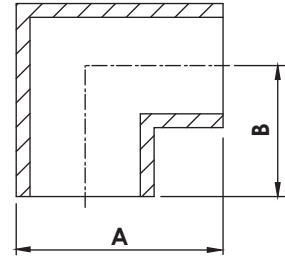
WELD FITTINGS

焊式90° 直角弯头

WELD 90° MITERED ELBOWS

材质：不锈钢304/L Material: 304/L

管表面处理：振动研磨 Tube Surface: Vibration Grinding



Catalogue PN	Size	Wall Thickness	A	B
BW-MEL-075	3/4"	1.65	34.93	25.40
BW-MEL-075L1	3/4"	1.65	45.08	35.56
BW-MEL-075L2	3/4"	1.65	45.63	36.10
BW-MEL-100	1.0"	1.65	60.20	47.50
BW-MEL-100L1	1.0"	1.65	60.45	47.75
BW-MEL-100L2	1.0"	1.65	58.90	46.20
BW-MEL-150	1.5"	1.65	76.20	57.15
BW-MEL-150L	1.5"	1.65	80.26	61.21
BW-MEL-200	2.0"	1.65	91.44	66.04
BW-MEL-200L1	2.0"	1.65	101.30	75.90
BW-MEL-200L2	2.0"	1.65	102.10	76.70
BW-MEL-200L3	2.0"	1.65	101.60	76.20
BW-MEL-250	2.5"	1.65	107.95	76.20
BW-MEL-250L1	2.5"	1.65	127.00	95.25
BW-MEL-250L2	2.5"	1.65	108.05	76.30
BW-MEL-300	3.0"	1.65	120.65	82.55
BW-MEL-300L	3.0"	1.65	113.50	75.40
BW-MEL-400	4.0"	2.11	149.35	98.55
BW-MEL-400L	4.0"	2.11	174.50	123.70
BW-MEL-600	6.0"	2.11	230.12	153.92

NOTE: 316/L MATERIAL AVAILABLE ON REQUEST.

WELD FITTINGS

焊式同径三通

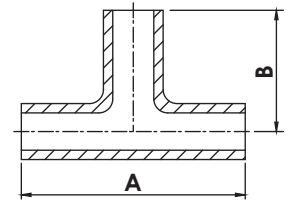
WELD EQUAL TEES

材质：不锈钢304/L Material: 304/L

管表面处理：振动研磨 Tube Surface: Vibration Grinding



Catalogue PN	Tube OD	Wall Thickness	A	B
BW-ET-050	1/2"	1.65	38.10	19.05
BW-ET-075	3/4"	1.65	50.80	25.40
BW-ET-075L1	3/4"	1.65	72.40	36.20
BW-ET-075L2	3/4"	1.65	95.20	47.60
BW-ET-100	1.0"	1.65	91.40	45.70
BW-ET-100L	1.0"	1.65	95.20	47.60
BW-ET-150	1.5"	1.65	114.40	57.20
BW-ET-150L	1.5"	1.65	122.42	61.21
BW-ET-200	2.0"	1.65	132.58	66.29
BW-ET-200L	2.0"	1.65	152.40	76.20
BW-ET-250	2.5"	1.65	152.40	76.20
BW-ET-250L1	2.5"	1.65	163.40	81.70
BW-ET-250L2	2.5"	1.65	190.24	95.12
BW-ET-300	3.0"	1.65	165.20	82.60
BW-ET-300L	3.0"	1.65	183.40	91.70
BW-ET-400	4.0"	2.11	196.80	98.40
BW-ET-400L1	4.0"	2.11	203.40	101.70
BW-ET-400L2	4.0"	2.11	247.56	123.78
BW-ET-600	6.0"	2.77	254.00	127.00
BW-ET-600L	6.0"	2.11	307.80	153.90



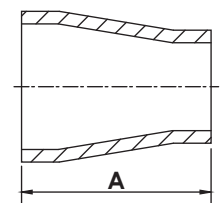
焊式同心缩径大小头

WELD CONICAL REDUCERS

材质：不锈钢304/L Material: 304/L

管表面处理：振动研磨 Tube Surface: Vibration Grinding

Catalogue PN	Tube OD	Wall Thickness	A
BW-CRN-100x050	1.0"x 1/2"	1.65 x 1.65	34.90
BW-CRN-100x075	1.0"x 3/4"	1.65 x 1.65	34.90
BW-CRN-150x050	1.5"x 1/2"	1.65 x 1.65	60.30
BW-CRN-150x075	1.5"x 3/4"	1.65 x 1.65	60.30
BW-CRN-150x100	1.5"x 1.0"	1.65 x 1.65	60.30
BW-CRN-200x100	2.0"x 1.0"	1.65 x 1.65	60.30
BW-CRN-200x150	2.0"x 1.5"	1.65 x 1.65	60.30
BW-CRN-250x150	2.5"x 1.5"	1.65 x 1.65	60.30
BW-CRN-250x200	2.5"x 2.0"	1.65 x 1.65	60.30
BW-CRN-300x150	3.0"x 1.5"	1.65 x 1.65	92.10
BW-CRN-300x200	3.0"x 2.0"	1.65 x 1.65	92.10
BW-CRN-300x250	3.0"x 2.5"	1.65 x 1.65	92.10
BW-CRN-400x150	4.0"x 1.5"	2.11 x 1.65	92.10
BW-CRN-400x200	4.0"x 2.0"	2.11 x 1.65	92.10
BW-CRN-400x250	4.0"x 2.5"	2.11 x 1.65	92.10
BW-CRN-400x300	4.0"x 3.0"	2.11 x 1.65	92.10



NOTE: 316/L MATERIAL AVAILABLE ON REQUEST.

WELD FITTINGS

焊式异径三通

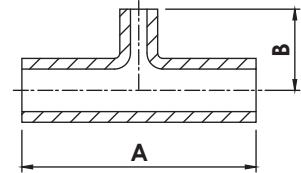
WELD REDUCING TEES

材质：不锈钢304/L Material: 304/L

管表面处理：振动研磨 Tube Surface: Vibration Grinding



Catalogue PN	Tube OD	Wall Thickness	A	B
BW-RT-100x050	1.0" x 1/2"	1.65 x 1.65	95.50	25.40
BW-RT-100x075	1.0" x 3/4"	1.65 x 1.65	95.50	28.45
BW-RT-150x050	1.5" x 1/2"	1.65 x 1.65	114.30	31.75
BW-RT-150x075	1.5" x 3/4"	1.65 x 1.65	114.30	35.05
BW-RT-150x075L	1.5" x 3/4"	1.65 x 0.89	114.30	35.05
BW-RT-150x100	1.5" x 1.0"	1.65 x 1.65	114.30	54.10
BW-RT-200x050	2.0" x 1/2"	1.65 x 1.65	152.40	38.10
BW-RT-200x075	2.0" x 3/4"	1.65 x 1.65	152.40	41.40
BW-RT-200x100	2.0" x 1.0"	1.65 x 1.65	152.40	60.30
BW-RT-200x150	2.0" x 1.5"	1.65 x 1.65	152.40	63.50
BW-RT-250x150	2.5" x 1.5"	1.65 x 1.65	152.40	69.85
BW-RT-250x200	2.5" x 2.0"	1.65 x 1.65	152.40	82.55
BW-RT-300x150	3.0" x 1.5"	1.65 x 1.65	165.10	76.20
BW-RT-300x200	3.0" x 2.0"	1.65 x 1.65	165.10	88.90
BW-RT-300x250	3.0" x 2.5"	1.65 x 1.65	165.10	82.55
BW-RT-400x150	4.0" x 1.5"	2.11 x 1.65	197.10	88.90
BW-RT-400x200	4.0" x 2.0"	2.11 x 1.65	197.10	101.60
BW-RT-400x250	4.0" x 2.5"	2.11 x 1.65	197.10	95.25
BW-RT-400x300	4.0" x 3.0"	2.11 x 1.65	197.10	95.25
BW-RT-600x150	6.0" x 1.5"	2.11 x 1.65	254.00	114.30
BW-RT-600x200	6.0" x 2.0"	2.11 x 1.65	254.00	127.00
BW-RT-600x250	6.0" x 2.5"	2.11 x 1.65	254.00	120.65
BW-RT-600x300	6.0" x 3.0"	2.11 x 1.65	254.00	120.65
BW-RT-600x400	6.0" x 4.0"	2.11 x 2.11	254.00	123.95



NOTE: 316/L MATERIAL AVAILABLE ON REQUEST.

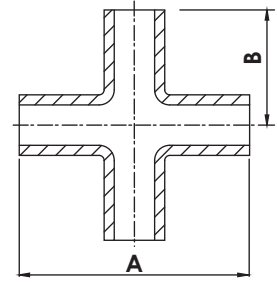
WELD FITTINGS

焊式同径四通

WELD 4-WAY EQUAL CROSSES

材质：不锈钢304/L Material: 304/L

管表面处理：振动研磨 Tube Surface: Vibration Grinding



Catalogue PN	Tube OD	Wall Thickness	A	B
BW-4C-050	1/2"	1.65	38.10	19.05
BW-4C-075	3/4"	1.65	50.80	25.40
BW-4C-075L1	3/4"	1.65	71.20	35.60
BW-4C-075L2	3/4"	1.65	95.20	47.60
BW-4C-100	1.0"	1.65	95.20	47.60
BW-4C-100L	1.0"	1.65	91.40	45.70
BW-4C-150	1.5"	1.65	114.40	57.20
BW-4C-150L	1.5"	1.65	121.42	60.71
BW-4C-200	2.0"	1.65	152.40	76.20
BW-4C-200L	2.0"	1.65	131.60	65.80
BW-4C-250	2.5"	1.65	152.40	76.20
BW-4C-250L	2.5"	1.65	190.50	95.25
BW-4C-300	3.0"	1.65	160.28	80.14
BW-4C-300L	3.0"	1.65	165.20	82.60
BW-4C-400	4.0"	2.11	196.80	98.40
BW-4C-400L	4.0"	2.11	247.40	123.70
BW-4C-600	6.0"	2.77	254.00	127.00
BW-4C-600L	6.0"	2.77	307.80	153.90

BW

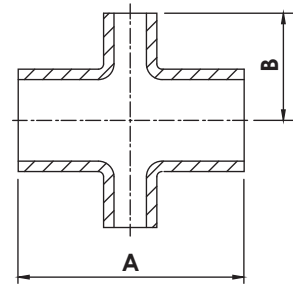
NOTE: 316/L MATERIAL AVAILABLE ON REQUEST.

焊式异径四通

WELD 4-WAY REDUCING CROSSES

材质：不锈钢304/L Material: 304/L

管表面处理：振动研磨 Tube Surface: Vibration Grinding



Catalogue PN	Tube OD	Wall Thickness	A	B
BW-4RC-100x050	1.0"x1/2"	1.65x1.65	95.50	25.40
BW-4RC-100x075	1.0"x3/4"	1.65x1.65	95.50	28.45
BW-4RC-150x050	1.5"x1/2"	1.65x1.65	114.30	31.75
BW-4RC-150x075	1.5"x3/4"	1.65x1.65	114.30	35.05
BW-4RC-150x100	1.5"x1.0"	1.65x1.65	114.30	54.10
BW-4RC-200x050	2.0"x1/2"	1.65x1.65	152.40	38.10
BW-4RC-200x075	2.0"x3/4"	1.65x1.65	152.40	41.40
BW-4RC-200x100	2.0"x1.0"	1.65x1.65	152.40	60.45
BW-4RC-200x150	2.0"x1.5"	1.65x1.65	152.40	63.50
BW-4RC-250x150	2.5"x1.5"	1.65x1.65	152.40	69.85
BW-4RC-250x200	2.5"x2.0"	1.65x1.65	152.40	82.55
BW-4RC-300x150	3.0"x1.5"	1.65x1.65	165.10	76.20
BW-4RC-300x200	3.0"x2.0"	1.65x1.65	165.10	88.90
BW-4RC-300x250	3.0"x2.5"	1.65x1.65	165.10	82.55
BW-4RC-400x150	4.0"x1.5"	2.11x1.65	197.10	88.90
BW-4RC-400x200	4.0"x2.0"	2.11x1.65	197.10	101.60
BW-4RC-400x250	4.0"x2.5"	2.11x1.65	197.10	95.25
BW-4RC-400x300	4.0"x3.0"	2.11x1.65	197.10	95.25
BW-4RC-600x150	6.0"x1.5"	2.11x1.65	254.00	114.30
BW-4RC-600x200	6.0"x2.0"	2.11x1.65	254.00	127.00
BW-4RC-600x250	6.0"x2.5"	2.11x1.65	254.00	120.65
BW-4RC-600x300	6.0"x3.0"	2.11x1.65	254.00	120.65
BW-4RC-600x400	6.0"x4.0"	2.11x2.11	254.00	123.95

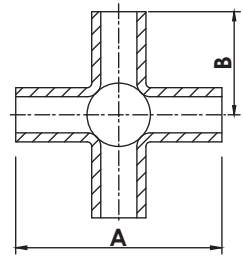
NOTE: 316/L MATERIAL AVAILABLE ON REQUEST.

焊式五通

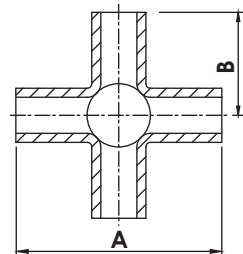
WELD 5-WAY CROSSES

材质：不锈钢304/L Material: 304/L

管表面处理：振动研磨 Tube Surface: Vibration Grinding



Catalogue PN	Tube OD	Wall Thickness	A	B
BW-5C-075	3/4"	1.65	50.80	25.40
BW-5C-075L	3/4"-L	1.65	67.30	33.65
BW-5C-100	1.0"	1.65	95.40	47.70
BW-5C-100L	1.0"-L	1.65	91.40	45.70
BW-5C-150	1.5"	1.65	114.40	57.20
BW-5C-200	2.0"	1.65	152.40	76.20
BW-5C-250	2.5"	1.65	152.40	76.20
BW-5C-250L	2.5"-L	1.65	190.26	95.13
BW-5C-300	3.0"	1.65	165.20	82.60
BW-5C-400	4.0"	2.11	197.20	98.60
BW-5C-400L	4.0"-L	2.11	247.40	123.70
BW-5C-600	6.0"	2.77	254.00	127.00
BW-5C-600L	6.0"-L	2.77	307.80	153.90



焊式六通

WELD 6-WAY CROSSES

材质：不锈钢304/L Material: 304/L

管表面处理：振动研磨 Tube Surface: Vibration Grinding

Catalogue PN	Tube OD	Wall Thickness	A	B
BW-6C-075	3/4"	1.65	50.80	25.40
BW-6C-075L	3/4"-L	1.65	67.30	33.65
BW-6C-100	1.0"	1.65	95.40	47.70
BW-6C-150	1.5"	1.65	114.40	57.20
BW-6C-200	2.0"	1.65	152.40	76.20
BW-6C-250	2.5"	1.65	152.40	76.20
BW-6C-250L	2.5"-L	1.65	190.26	95.13
BW-6C-300	3.0"	1.65	165.20	82.60
BW-6C-400	4.0"	2.11	197.20	98.60
BW-6C-400L	4.0"-L	2.11	247.40	123.70
BW-6C-600	6.0"	2.77	254.00	127.00
BW-6C-600L	6.0"-L	2.77	307.80	153.90

NOTE: 316/L MATERIAL AVAILABLE ON REQUEST.



**BELLOWS,
FLEXIBLE HOSES &
TRAPS**

BELLOWS, FLEXIBLE HOSES & TRAPS

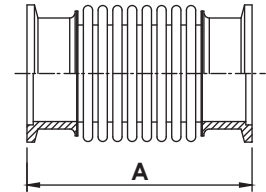
KF 成形波纹管

KF BELLOWS

材质：不锈钢304/L Material: 304/L



Catalogue PN	Size	Bellow Wall Thickness	A Free Length
MB-KF-16-100L	KF16-100L	0.15mmt	100.00
MB-KF-16-250L	KF16-250L	0.15mmt	250.00
MB-KF-16-500L	KF16-500L	0.15mmt	500.00
MB-KF-16-750L	KF16-750L	0.15mmt	750.00
MB-KF-16-1000L	KF16-1000L	0.15mmt	1,000.00
MB-KF-25-100L	KF25-100L	0.15mmt	100.00
MB-KF-25-250L	KF25-250L	0.15mmt	250.00
MB-KF-25-500L	KF25-500L	0.15mmt	500.00
MB-KF-25-750L	KF25-750L	0.15mmt	750.00
MB-KF-25-1000L	KF25-1000L	0.15mmt	1,000.00
MB-KF-40-100L	KF40-100L	0.15mmt	100.00
MB-KF-40-250L	KF40-250L	0.15mmt	250.00
MB-KF-40-500L	KF40-500L	0.15mmt	500.00
MB-KF-40-750L	KF40-750L	0.15mmt	750.00
MB-KF-40-1000L	KF40-1000L	0.15mmt	1,000.00
MB-KF-50-100L	KF50-100L	0.15mmt	100.00
MB-KF-50-250L	KF50-250L	0.15mmt	250.00
MB-KF-50-500L	KF50-500L	0.15mmt	500.00
MB-KF-50-750L	KF50-750L	0.15mmt	750.00
MB-KF-50-1000L	KF50-1000L	0.15mmt	1,000.00



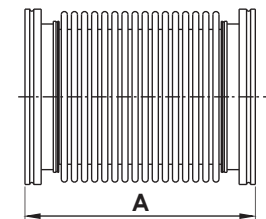
ISO-K 成形波纹管

ISO-K BELLOWS

材质：不锈钢304/L Material: 304/L



Catalogue PN	Size	Bellow Wall Thickness	A Free Length
MB-ISOK-63-100L	ISO63-100L	0.20mmt	100.00
MB-ISOK-63-250L	ISO63-250L	0.20mmt	250.00
MB-ISOK-63-500L	ISO63-500L	0.20mmt	500.00
MB-ISOK-63-750L	ISO63-750L	0.20mmt	750.00
MB-ISOK-63-1000L	ISO63-1000L	0.20mmt	1,000.00
MB-ISOK-80-100L	ISO80-100L	0.20mmt	100.00
MB-ISOK-80-250L	ISO80-250L	0.20mmt	250.00
MB-ISOK-80-500L	ISO80-500L	0.20mmt	500.00
MB-ISOK-80-750L	ISO80-750L	0.20mmt	750.00
MB-ISOK-80-1000L	ISO80-1000L	0.20mmt	1,000.00
MB-ISOK-100-100L	ISO100-100L	0.20mmt	100.00
MB-ISOK-100-250L	ISO100-250L	0.20mmt	250.00
MB-ISOK-100-500L	ISO100-500L	0.20mmt	500.00
MB-ISOK-100-750L	ISO100-750L	0.20mmt	750.00
MB-ISOK-100-1000L	ISO100-1000L	0.20mmt	1,000.00
MB-ISOK-160-100L	ISO160-100L	0.20mmt	100.00
MB-ISOK-160-250L	ISO160-250L	0.20mmt	250.00
MB-ISOK-160-500L	ISO160-500L	0.20mmt	500.00
MB-ISOK-160-750L	ISO160-750L	0.20mmt	750.00
MB-ISOK-160-1000L	ISO160-1000L	0.20mmt	1,000.00



NOTE: 316/L MATERIAL AVAILABLE ON REQUEST.

BELLOWS, FLEXIBLE HOSES & TRAPS

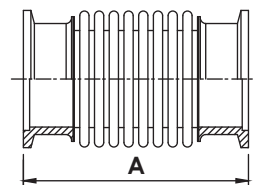
KF 软管

KF FLEXIBLE HOSES

材质：不锈钢304/L Material: 304/L



Catalogue PN	Size	Bellow Wall Thickness	A Free Length
MH-KF-16-250L	KF16-250L	0.15mmt	250.00
MH-KF-16-500L	KF16-500L	0.15mmt	500.00
MH-KF-16-1000L	KF16-1000L	0.15mmt	1,000.00
MH-KF-25-250L	KF25-250L	0.15mmt	250.00
MH-KF-25-500L	KF25-500L	0.15mmt	500.00
MH-KF-25-1000L	KF25-1000L	0.15mmt	1,000.00
MH-KF-40-250L	KF40-250L	0.15mmt	250.00
MH-KF-40-500L	KF40-500L	0.15mmt	500.00
MH-KF-40-1000L	KF40-1000L	0.15mmt	1,000.00
MH-KF-50-250L	KF50-250L	0.15mmt	250.00
MH-KF-50-500L	KF50-500L	0.15mmt	500.00
MH-KF-50-1000L	KF50-1000L	0.15mmt	1,000.00



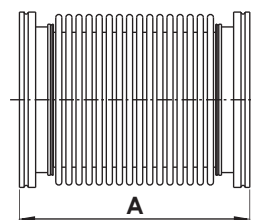
ISO-K 软管

ISO-K FLEXIBLE HOSES

材质：不锈钢304/L Material: 304/L



Catalogue PN	Size	Bellow Wall Thickness	A Free Length
MH-ISOK-63-250L	ISO63-250L	0.20mmt	250.00
MH-ISOK-63-500L	ISO63-500L	0.20mmt	500.00
MH-ISOK-63-1000L	ISO63-1000L	0.20mmt	1,000.00
MH-ISOK-80-250L	ISO80-250L	0.20mmt	250.00
MH-ISOK-80-500L	ISO80-500L	0.20mmt	500.00
MH-ISOK-80-1000L	ISO80-1000L	0.20mmt	1,000.00
MH-ISOK-100-250L	ISO100-250L	0.20mmt	250.00
MH-ISOK-100-500L	ISO100-500L	0.20mmt	500.00
MH-ISOK-100-1000L	ISO100-1000L	0.20mmt	1,000.00
MH-ISOK-160-250L	ISO160-250L	0.20mmt	250.00
MH-ISOK-160-500L	ISO160-500L	0.20mmt	500.00
MH-ISOK-160-1000L	ISO160-1000L	0.20mmt	1,000.00

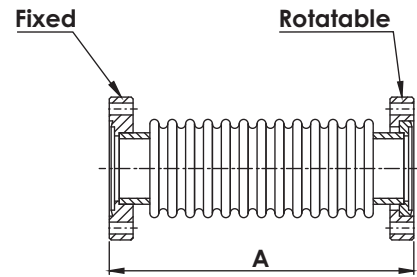


NOTE: 316/L MATERIAL AVAILABLE ON REQUEST.

BELLOWS, FLEXIBLE HOSES & TRAPS

CF 成形波纹管 CF BELLOWS

材质：不锈钢304/L Material: 304/L



Catalogue PN	Size	Bellow Wall Thickness	A Free Length
MB-CF-133-082L	CF1.33-82L	0.15mmt	82.00
MB-CF-212-082L	CF2.12-82L	0.15mmt	82.00
MB-CF-275-082L	CF2.75-82L	0.15mmt	82.00
MB-CF-338-082L	CF3.38-82L	0.15mmt	82.00
MB-CF-450-178L	CF4.50-178L	0.20mmt	178.00
MB-CF-462-178L	CF4.62-178L	0.20mmt	178.00
MB-CF-600-178L	CF6.00-178L	0.20mmt	178.00
MB-CF-800-178L	CF8.00-178L	0.20mmt	178.00

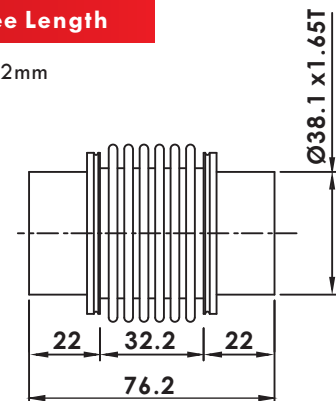
NOTE: 316/L MATERIAL AVAILABLE ON REQUEST.

成形波纹管 WELD FORMED BELLOWS

材质：不锈钢304/L Material: 304/L

Catalogue PN	Size	Bellow Wall Thickness	A Free Length
--------------	------	-----------------------	---------------

A2511A04004000761K	KF40-76.2L	0.15mm	76.2mm
--------------------	------------	--------	--------

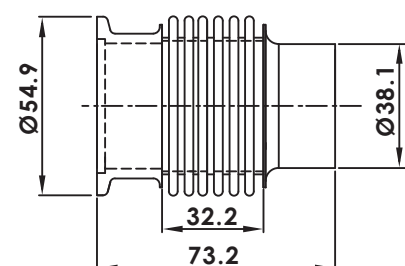


焊式接头成型波纹管 WELD STUB FORMED BELLOWS

材质：不锈钢304/L Material: 304/L

Catalogue PN	Size	Bellow Wall Thickness	A Free Length
--------------	------	-----------------------	---------------

A2511AZZ004000741K	KF40-73.2L	0.15mm	73.2mm
--------------------	------------	--------	--------



-Formed Bellows Can Be Customized As Request.

NOTE: 316/L MATERIAL AVAILABLE ON REQUEST.

回油过滤器

FORELINE TRAPS SEALED METAL TYPE

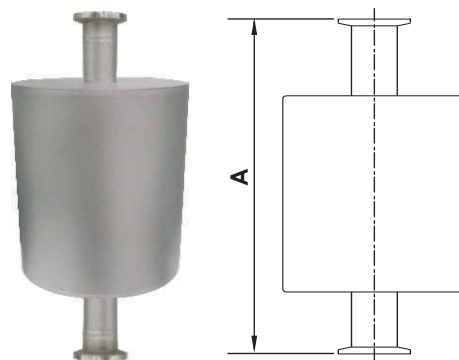
*FILTER MATERIAL: COPPER WOOL

*FILTER TYPE: SEALED TYPE

*SURFACE FINISHED: BEAD BLASTED

*BODY MATERIAL: 304/L

Catalogue PN	Flange Type	Body OD	A
FT-S-KF16	KF16	101.6	241.30
FT-S-KF25	KF25	101.6	224.54
FT-S-KF40	KF40	101.6	226.52
FT-S-KF50	KF50	101.6	227.33



富东机械制造(香港)有限公司

Fudong Machinery Manufacture (HK) Co, Ltd

地址: 广东省深圳市龙岗区吉华街道甘坑社区甘坑同富裕工业区 2 号 3 栋 601A1-6F

网址: <https://www.fudongmachinery.com> Email: jack@fudongmachinery.com

电话: 0755-2220 6257 传真: 0755-2220 4982

ShenZhen Office: 601A1-6F, Building A3, No.2, Tongfuyu Industrial Park, Gankeng, Jihua Subdistrict,
Longgang District, Shenzhen City, Guangdong Province, China

Website: <https://www.fudongmachinery.com> Email: jack@fudongmachinery.com

Tel: +86-755-2220 6257 Fax: +86-755-2220 4982

